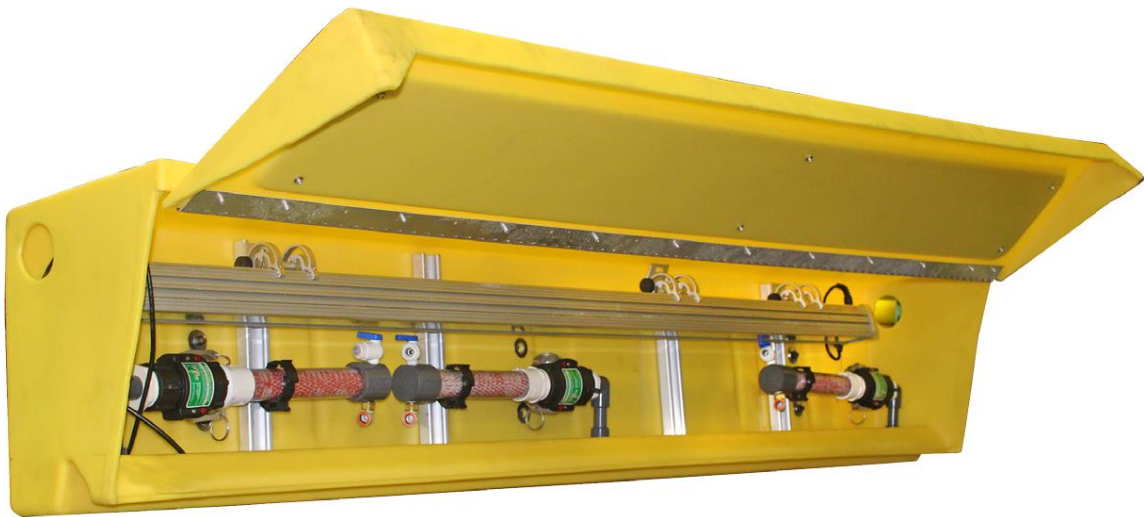




Double Palooza™ Applicator



Owner's Manual

Sonny's Enterprises, Inc.
5605 Hiatus Road
Tamarac, Florida 33321
16v1



Table of Contents

WARNING *SAFETY REQUIREMENTS* WARNING3

***INTRODUCTION*5**

 Product Specifications.....6

 Optional Related Equipment7

***INSTALLATION*10**

 Utilities Requirements10

 Equipment Installation11

***GENERAL OPERATION*13**

***PREVENTIVE MAINTENANCE*14**

***PARTS LIST*15**

***WARRANTY*16**

***CUSTOMER SERVICE*17**



Equipment Program - Manuals Double Palooza Applicator

WARNING *SAFETY REQUIREMENTS* WARNING

1. All employees must be thoroughly trained in safe operation and standard maintenance practices. All employees must review this entire manual monthly.
2. Do not enter the wash tunnel when the equipment is operating. Death or dismemberment may occur.
3. Do not wear loose fitting clothing or jewelry around moving equipment. Do not allow any part of your body or other objects (including ladders, hoses or tools) to come in contact with moving equipment. Entanglement may result causing death or dismemberment.
4. Do not leave a ladder or any other items such as wash down hoses or tools in the wash tunnel while equipment is running. Vehicle damage and injury, including death, can occur.
5. Always exercise caution when walking (never run) through the wash tunnel as there may be slippery conditions. Be careful so you do not bump into or trip over equipment.
6. Only those employees specifically instructed and trained by the location management are permitted to enter the wash tunnel to perform inspections or maintenance. At least two qualified maintenance people must be present when performing equipment repairs or preventive maintenance.
7. Do not perform any maintenance or work on equipment unless you first perform Lock-Out Safety Precautions. All electrically powered equipment must have manually operated disconnects capable of being locked in the "OFF" position. Equipment that has been "locked out" for any reason must be restarted only by the person who performed the "lock out" operation.
8. When working on any equipment that is higher than your shoulders, always use a fiberglass ladder that is in good condition.
9. Do not attempt to repair or adjust any pressurized liquid or pneumatic part, hose, pipe or fitting while that equipment is in operation.
10. Electrical connections and repairs must be performed by a Licensed Electrician Only.
11. Emergency "STOP" buttons must be well marked and their location and proper use reviewed with all personnel. Any activated "STOP" button must be reset only by the person who activated it. Clear the wash tunnel of any people, ladders, hoses, tools and other loose items before restarting the equipment. An audible device must sound to warn people that the equipment is starting.
12. Do not operate any piece of equipment that requires safety covers with those covers removed or improperly installed. Do not operate any piece of equipment if any component of that piece is suspected to be defective or malfunctioning.



Equipment Program - Manuals Double Palooza Applicator

13. Store all cleaning and washing solutions and oils in a well-ventilated area. Clean up fluid spills immediately to prevent hazardous safety conditions. Be certain to follow all safety procedures on SDS Sheets for each chemical product used.
14. All hydraulic and electric systems in the wash tunnel equipped with a torque relief or overload should be checked and set at the minimum amount that will allow for proper functionality under normal washing conditions.
15. No unauthorized people should ever be permitted in the wash tunnel or near the equipment at any time.

* * *

!! CAUTION !!

When a piece of equipment must be in operation during inspection or maintenance, one qualified technician must stay at the power disconnect switch while another qualified technician performs the inspection or maintenance.



Equipment Program - Manuals Double Palooza Applicator

INTRODUCTION

This Owner's Manual contains information that is vital to the successful installation, operation and maintenance of your SONNY'S vehicle washing equipment.

Please read, and understand, the full contents of this manual before installation and operation of the equipment. Keep this booklet in a location where it may be used for ongoing reference.

Should you have any questions on the operation or servicing of this equipment please contact

TECHNICAL SERVICES DEPT.

SONNY'S ENTERPRISES INC.

5605 Hiatus Road

TAMARAC, FLORIDA 33321

TELEPHONE: 800-327-8723 FAX: 800-495-4049

THANK YOU FOR YOUR CONFIDENCE IN SONNY'S !!!!





Product Specifications

- Attachment (single or triple)
- High volume of bubbles with no air pump
- Hinged cover to keep debris out
- ½" chemical poly tubing and 3/8" air poly tubing. (Recommended use with G57 foaming tanks or Dosatron foaming panel)
- Custom logo design (optional)
- U-Bolts and hardware included in mounting kits
- Easy cleaning foam generator
- Easy connection points for poly line on foam generator with NPT push fittings

Optional Related Equipment



Double-Palooza, Sheet Style Foam Applicator

SONNY'S Double-Palooza when used as a Foam Applicator delivers a satisfying show for your customers while controlling chemical consumption with tight precision. The Double-Palooza affords precise control for thinner airier application in the middle of the tunnel for easier rinsing of waxes and protectants. Or when used as a Water Fall Rinse*, the Double-Palooza flushes foam from hard to rinse areas, such as door jambs and gutter rails.

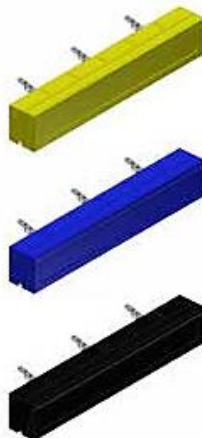
Choose Your Manifold



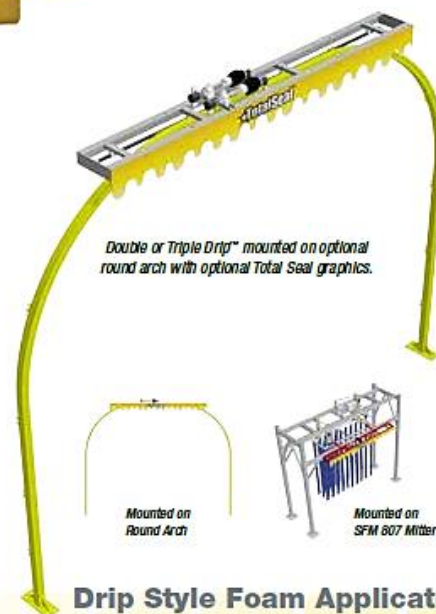
Choose Your Arch or Attachment



Choose Your Color



Choose Your Decal



Drip Style Foam Applicator

SONNY'S Drip Style Foam Applicators pool and drip a precisely spaced drop of foamed chemistry in a crossed pattern that ensures complete coverage. Customers inside the car receive visual confirmation that the secondary foam application they paid for is being applied as drops penetrate previous foam applications and spread a new color across their windshield for maximum satisfaction.

FOAM EFFECT AND COVERAGE FOR ALL SHEET STYLE FOAMERS VARIES DEPENDING ON CHEMICAL USED, CHEMICAL TO AIR RATIO, CHEMICAL CONCENTRATION, AND PUMPING STATION CONFIGURATION.

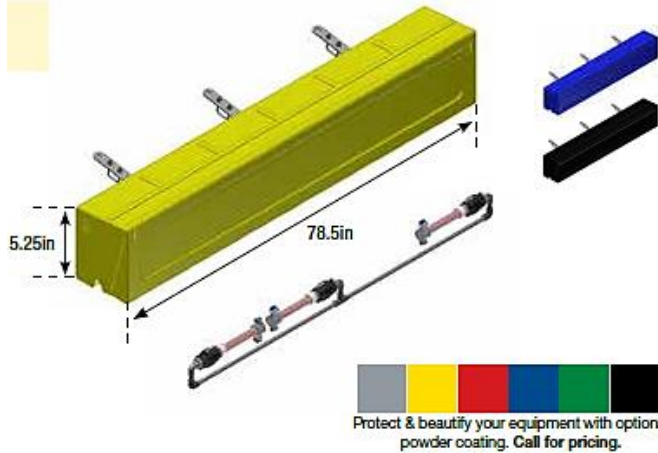
* For Double-Palooza Water Fall Rinse manifold option see SONNY'S Rain Finishing Systems Spec Sheet



Equipment Program - Manuals

Double Palooza Applicator

Double-Palooza Applicator™ Thin Sheet Style Foamer



Recommended Options

Item #	Description	Price
20006233	Graco D52966 FMR 1 TANK 6 GAL 110V	\$1299.00
20006278	Graco D52966 FMR 1 TANK 6 GAL 24V	1299.00

Includes:

- Manifold
- Quick Release Foamers
- Mounting Brackets

Requires:

- Graco Single Pump Station OR (3) G57 for Triple Foam Applications

Optional:

- Powder Coating
- Decal

Description	Price
Double-Palooza Thin Sheet Style Foamer w/ Round Arch	\$2,234.00
Double-Palooza Thin Sheet Style Foamer w/ Square Arch	\$2,358.00
Double-Palooza Thin Sheet Style Foamer w/ 2x2 Attachment	\$1,010.00
Double-Palooza Thin Sheet Style Foamer w/ 4x4 Attachment	\$1,016.00
Double-Palooza Thin Sheet Style Foamer w/ PECO Arch attach.	\$1,101.00
Material ID: TOTAL_SHINE_WAX	

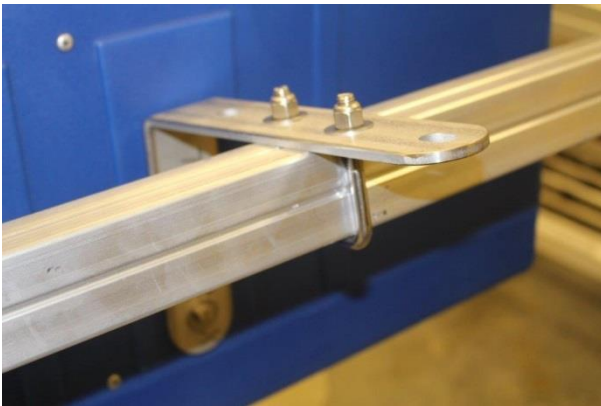
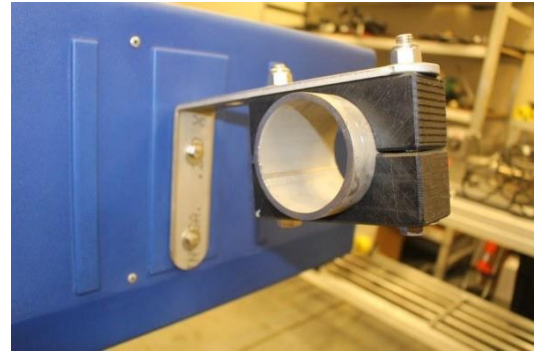
Description	Price
G57 Santoprene Foaming Pump Station Assembly. 511 Hydrominder, 1 Pump, 1 Tank, 24V or 110V	\$742.00

Decal Options

Item #	Description		Price
10011913	Decal, Foam and Glo, 72in x 10in		\$100.00
10011914	Decal, Hot Wax and Shine, 72" x 10"		100.00
10011915	Decal, Triple Foam, 72" x 10"		100.00
10011916	Decal, Lava Bath, 72" x 10"		100.00
10011917	Decal, Rain X, 72" x 10"		100.00



Equipment Program - Manuals Double Palooza Applicator





INSTALLATION

Utilities Requirements

Utilities interconnection and the materials required for interconnection to Sonny's equipment are the responsibility of the customer!

Perform all trades work to all applicable local and national codes!

Water

- The Customer's Plumber is to provide and install a ½" city water line @60PSI (nominal) to the solenoid valve on the chemical distribution system.
- Additionally, the customer's plumber is to install the Sonny's supplied liquid solenoid valve and any specified solution injector valve, at the arch inlet pipe fitting. For the ease of maintenance the customer's plumber should provide and install a ball type shut-off valve upstream of the liquid solenoid valve.
- The Customer's Plumber is to provide materials and install ½"inch diameter interconnecting plumbing (including a ball valve for air shut-off) from the customers pump station to the arch.

Compressed Air

- The customer's plumber is to provide materials and install a 3/8" diameter compressed air line from the customer's air compressor to the air solenoid valve on the air inlet fitting of the arch.

Electrical

- The Customer's Electrician is to provide and install single phase power from the (24 or 110 VAC as determined at time of order) from the Customer's Controller system to the liquid solenoid valve for each spray bars and, if required, the motor starter coil for the 20 GPM pump. If single pole relays are used it will require a separate relay for the light.

???? QUESTIONS ????

CALL

TECHNICAL SERVICES DEPT.

SONNY'S ENTERPRISES INC.

TAMARAC, FLORIDA 33321

TELEPHONE: 800-327-8723

FAX: 800-495-4049



Equipment Program - Manuals Double Palooza Applicator

Equipment Installation

Tools

1. Safety Glasses
2. Ladder
3. Standard Combo Wrenches
4. Standard Screwdriver
5. Tape Measure
6. Hand Drill and bits

Consumables

1. Stainless Steel U-Bolts
2. Poly Line 3/8"
3. Poly Line 1/2"

Work Force

Two (2) Persons

Time (assuming no problems)

1.00 – 2.00 hours

Installation Steps

1. Determine where the pump stations are and start running 3/8" air poly lines and 1/2" chemical lines to the applicator attachment.
2. Sweep any debris and clean the area completely before installation.
3. Bring the applicator attachments into the tunnel.
4. Install the u-bolts in the appropriate location, lock down the brackets to the Arch, Mitter or Omni.
5. Attach the applicator to the mounting brackets and secure with hardware.
6. Connect 1/2" chemical poly lines and 3/8" air lines from panel room to the Total Shine foam generators.



Equipment Program - Manuals Double Palooza Applicator

ADJUSTMENTS

1. Adjustments to the application sequence, timing, and duration of all chemical applications can be regulated by the tunnel controller.
2. Adjustments to the dilution ratio of chemical to water can be changed by increasing or decreasing the size of the metering tips and/or hydrominders/eductors.
3. The volume of the diluted product can be regulated by the air pressure to the air-driven pump. The standard setting is 40PSI, higher air pressure will provide a higher volume to the application.
4. Further adjustment to the volume of the diluted product can be done using a ball valve.
5. Foam consistency can be adjusted by the air regulator at the pump station used for air to the application. The standard is 20PSI, fine air/foam adjustment can be accomplished out at the application using a ball valve.



Equipment Program - Manuals Double Palooza Applicator

GENERAL OPERATION

The Customer's equipment Programmer provides pre-selected and timed power to the coil of the liquid solenoid valve for each arch style listed and the coil of the air solenoid valve.

Optimum arch operation can be achieved by allowing the arch to begin spraying solution when the approaching vehicle is approximately 1 foot away from the spray nozzles. Shut-off of sprayed solution should occur when the rear bumper of the vehicle has just passed the spray nozzles.



PREVENTIVE MAINTENANCE

DAILY

Operational Checks

1. Check for leaks around hoses and fittings. Repair any serious leaks immediately.
2. Perform general examination of operation, listening for any unusual noises.
3. Check spray pattern from ports, clean any dirty ports.

WEEKLY

1. Check all nozzles for wear and replace if necessary.
2. Remove, clean and reinsert the tuffy pad(s).

MONTHLY

Check all hardware and fittings for tightness and clean thoroughly.

ANNUALLY

Replace all nozzles to prevent excessive chemical usage and uneven application.

PARTS

20010420



10010179





WARRANTY

SONNY'S ENTERPRISES, INC. FACTORY LIMITED LIFETIME WARRANTY

Equipment manufactured by SONNY'S ENTERPRISES, INC. is warranted to be free from defect in material and workmanship. Welded metal framework and other non-moving, non-wearable fabricated metal components manufactured by SONNY'S are warranted for the life of the equipment to the original purchaser. Fabricated metal wearable surface and moving components manufactured by SONNY'S are warranted for a period of one (1) year to the original purchaser of the equipment.

All components assembled to SONNY'S equipment that are manufactured by others are warranted by the appropriate manufacturer and subject to that manufacturer's limited warranty. Contact SONNY'S for the specific information on other component manufacturer's warranty terms. All new cloth shipped with new SONNY'S equipment is warranted for a period of one (1) year or 80,000, whichever occurs first.

This warranty is not assignable or transferable. The warranty period begins the first day following installation or 30 days from the original invoice date, whichever occurs first. The Seller's liability shall be limited to repair or replacement of materials found to be defective within the warranty period. In the event of repair or replacement this limited warranty is noncumulative. The Purchaser must supply the Seller with immediate written notice when any defects are found. The Seller shall have the option of requiring the return of defective material to establish the Purchaser's claim. Neither labor nor transportation charges are included in this warranty. Transportation damage claims are to be submitted to the carrier of the damaged materials.

This warranty is based upon the Purchaser's reasonable care and maintenance of the warranted equipment. It does not apply to any equipment which has been subject to misuse, including neglect, accident or exposure to harsh chemicals or chemicals that react violently with: water, organic acids (e.g. acetic acid), inorganic acids (e.g. hydrofluoric acid), oxidizing agents (e.g. peroxides), and metals (e.g. aluminum). Chemicals corrosive to: aluminum alloys, carbon steel, and other metals. Nor does it apply to any equipment which has been repaired or altered by anyone not so authorized by SONNY'S. Further, the equipment must be properly installed with proper accuracy of all specified plumbing, electrical, and mechanical requirements. This warranty does not apply to normal wear and tear or routine maintenance components.

EXCEPT AS EXPRESSLY STATED HEREIN, SONNY'S SHALL NOT BE LIABLE FOR DAMAGES OF ANY KIND IN CONNECTION WITH THE PURCHASE, MAINTENANCE, OR USE OF THIS EQUIPMENT INCLUDING LOSS OF PROFITS AND ALL CLAIMS FOR CONSEQUENTIAL DAMAGES. THE LIMITED WARRANTY EXPRESSED HEREIN IS IN LIEU OF ALL OTHER WARRANTIES EXPRESSED OR IMPLIED. SONNY'S NEITHER ASSUMES NOR AUTHORIZES ANY PERSON TO ASSUME FOR IT ANY OTHER OBLIGATION OR LIABILITY IN CONNECTION HERewith.



Equipment Program - Manuals Double Palooza Applicator

CUSTOMER SERVICE

Please contact SONNY'S Equipment Department for installation and/or operational questions regarding this piece of equipment.

Please refer to the Parts list in this manual or our Parts Catalog and contact SONNY'S Customer Service Order Entry Department for any replacement parts for this piece of equipment.

For Equipment Repairs please visit the web at www.sonnysdirect.com/manuals.

DEPARTMENT	PHONE NUMBERS	FAX NUMBERS
Toll Free Main Line	800-327-8723	800-495-4049
Equipment Department	954-720-4100	954-720-9292

Or you can email Sales at sales@sonnysdirect.com

Thank you for being a SONNY'S car wash equipment owner!

From all of us here at

