



# Media Arch



## Owner's Manual

Sonny's Enterprises LLC  
5605 Hiatus Road  
Tamarac, Florida 33321

## TABLE OF CONTENTS

TABLE OF CONTENTS .....	2
SAFETY REQUIREMENTS.....	3
INTRODUCTION .....	5
PRODUCT FEATURES .....	6
PRODUCT SPECIFICATIONS.....	7
DIMENSIONS.....	8
PARTS LIST.....	12
INSTALLATION .....	13
MAINTENANCE .....	15
DAILY .....	15
MONTHLY .....	15
CUSTOMER SERVICE .....	16
WARRANTY.....	17

Sonny's and Sonny's The CarWash Factory are Registered trademarks of Sonny's Enterprises LLC

Make CarWashing Easy and OneWash are trademarks of Sonny's Enterprises LLC

**Designed** here. **Built** here. **Backed** here. is a trademark of Sonny's Enterprises LLC

Products mentioned herein are for identification purposes only and may be registered trademarks of their respective companies.

All other brand names, trademarks or registered trademarks are the property of their respective owners.

## **SAFETY REQUIREMENTS**

### **\*\*WARNING\*\***

1. All employees must be thoroughly trained in safe operation and standard maintenance practices. All employees must review this entire manual monthly.
2. Do not enter the wash tunnel when the equipment is operating. Death or dismemberment may occur.
3. Do not wear loose fitting clothing or jewelry around moving equipment. Do not allow any part of your body or other objects (including ladders, hoses, or tools) to come in contact with moving equipment. Entanglement may result causing death or dismemberment.
4. Do not leave a ladder or any other items such as wash down hoses or tools in the wash tunnel while equipment is running. Vehicle damage and injury, including death, can occur.
5. Always exercise caution when walking (never run) through the wash tunnel as there may be slippery conditions. Be careful so you do not bump into or trip over equipment.
6. Only those employees specifically instructed and trained by the location management are permitted to enter the wash tunnel to perform inspections or maintenance. At least two qualified maintenance people must be present when performing equipment repairs or preventive maintenance.
7. Do not perform any maintenance or work on equipment unless you first perform Lock-Out Safety Precautions. All electrically powered equipment must have manually operated disconnects capable of being locked in the "OFF" position. Equipment that has been "locked out" for any reason must be restarted only by the person who performed the "lock out" operation.
8. When working on any equipment that is higher than your shoulders, always use a fiberglass ladder that is in good condition.
9. Do not attempt to repair or adjust any pressurized liquid or pneumatic part, hose, pipe or fitting while that equipment is in operation.
10. Electrical connections and repairs must be performed by a Licensed Electrician Only.
11. Emergency "STOP" buttons must be well marked, and their location and proper use reviewed with all personnel. Any activated "STOP" button must be reset only by the person who activated it. Clear the wash tunnel of any people, ladders, hoses, tools, and other loose items before restarting the equipment. An audible device must sound to warn people that the equipment is starting.

12. Do not operate any piece of equipment that requires safety covers with those covers removed or improperly installed. Do not operate any piece of equipment if any component of that piece is suspected to be defective or malfunctioning.
13. Store all cleaning and washing solutions and oils in a well-ventilated area. Clean up fluid spills immediately to prevent hazardous safety conditions. Be certain to follow all safety procedures on SDS Sheets for each chemical product used.
14. All hydraulic and electric systems in the wash tunnel equipped with a torque relief or overload should be checked and set at the minimum amount that will allow for proper functionality under normal washing conditions.
15. No unauthorized people should ever be permitted in the wash tunnel or near the equipment at any time.

### **!! CAUTION !!**

When a piece of equipment must be in operation during inspection or maintenance, one qualified technician must stay at the power disconnect switch while another qualified technician performs the inspection or maintenance.

## INTRODUCTION

This Manual contains information that is vital to the successful installation, operation and maintenance of your Sonny's vehicle washing equipment.

Please read, and understand, the full contents of this manual before installation and operation of the equipment. Keep this booklet in a location where it may be used for ongoing reference.

Should you have any questions on the operation or servicing of this equipment please contact:

**TECHNICAL SERVICES DEPT.  
SONNY'S ENTERPRISES INC.  
5605 Hiatus Road  
TAMARAC, FLORIDA 33321**

**TELEPHONE: 800-327-8723      FAX: 800-495-4049**

THANK YOU FOR YOUR CONFIDENCE IN SONNY'S!



## PRODUCT FEATURES

- Media Arch can **mount up to three** signs: top, left and right, as in the following sample custom designs from Mr. Foamer:



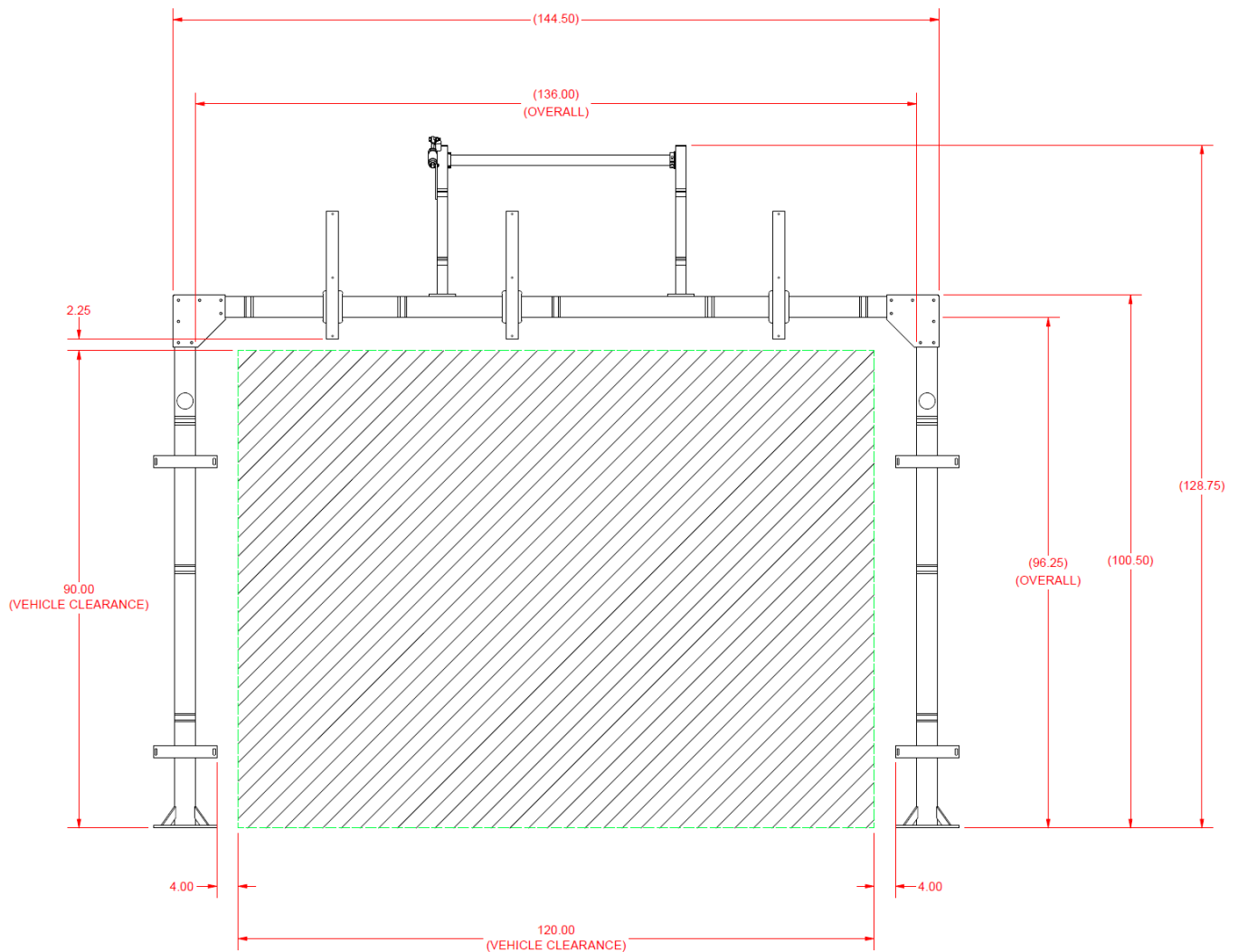
- Media Arch has pre-drilled holes for running wiring, so the arch can also be used for installing a colored light system.
- Pre-drilled holes can also be used for running wiring and hosing for chemical applicators, so the arch can be used as a combination for signage and a pre-soak application.
- Media Arch also has an option for a pivoting arm designed for attaching a projector, so a marketing image can be projected on a vehicle's windshield, with the image following the windshield through the tunnel.
- Frame and legs are constructed from aluminum, with optional finish powder coating in multiple color choices.
- The arch is available with two different heights (128 ¾" or 152 ¾").

## PRODUCT SPECIFICATIONS

<b>Footprint Length</b>	77 ½"
<b>Footprint Width</b>	144 ½"
<b>Unit Height</b>	128 ¾" or 152 ¾"
<b>Vehicle Clearance Height</b>	90" or 100"
<b>Vehicle Clearance Width</b>	120"

## DIMENSIONS

**Figure #1 – Unit Height 128 ¾" – Vehicle Height Clearance 90"**

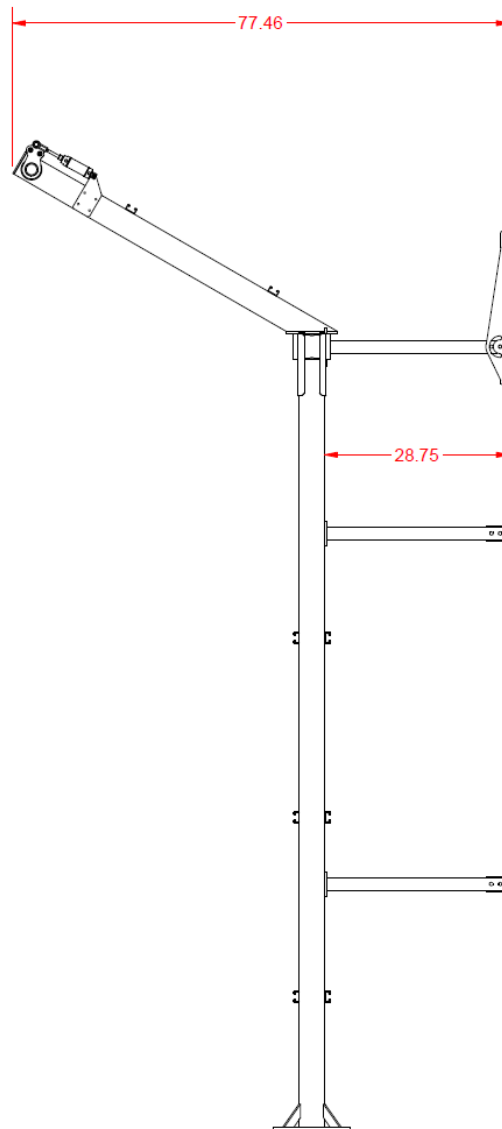


**Note:** The area shaded with diagonal lines indicates the vehicle clearance area. Any signage mounted on the left, right or top brackets should NOT extend into this clearance area.



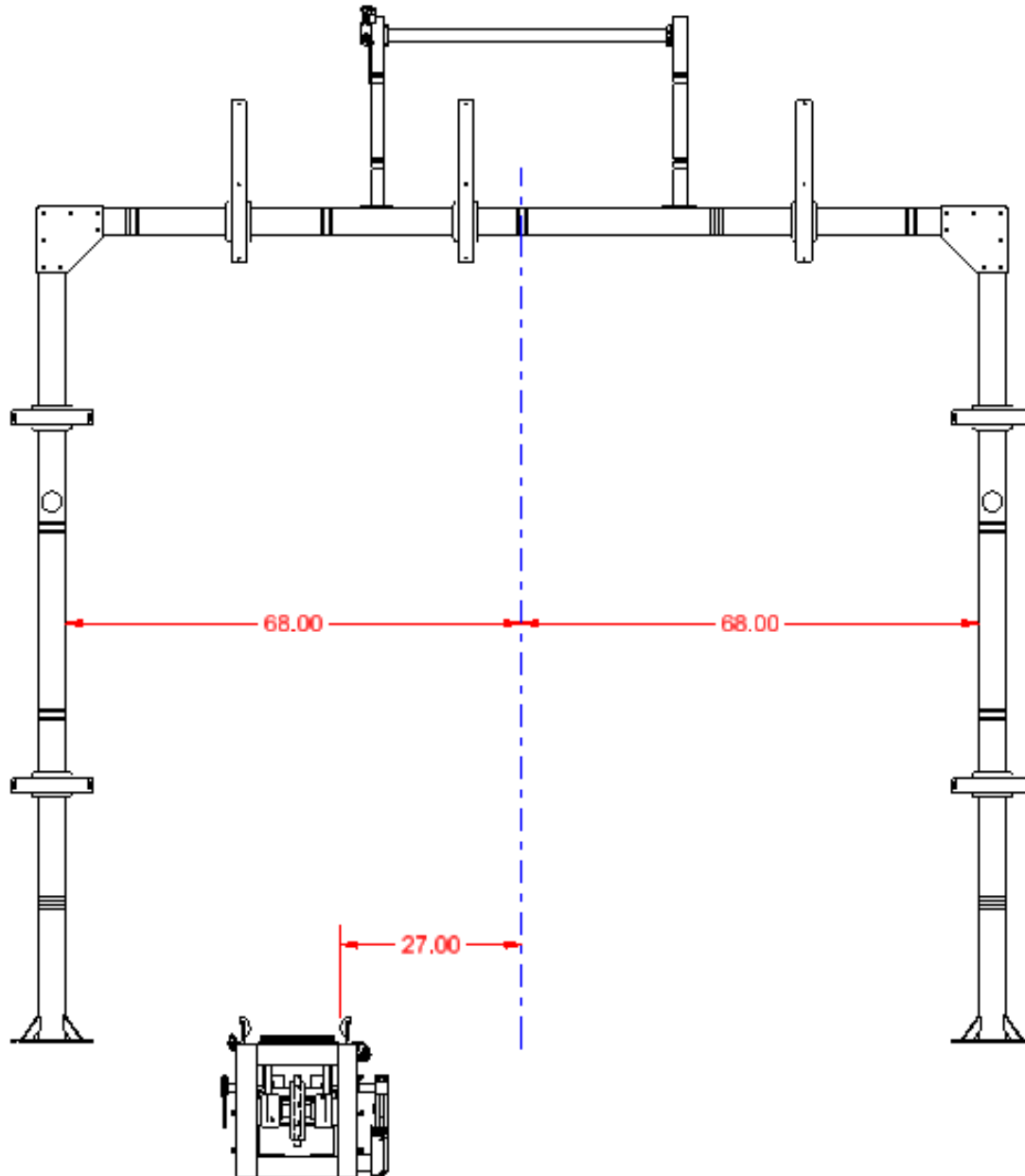


**Figure #3 – Side View**



In this side view, you can see the pipes extending off the top of the frame, which is for installing an optional projector, to project a marketing image on a vehicle's windshield.

Figure #4 – Tunnel Layout Diagram



## PARTS LIST

- Leg Post Weldment W/Holes, 8ft (**20018402**)
- Cross Over Beam Weldment W/Holes, 12ft (**20018404**)
- Arch Corner Joint Plate Black PC (**10012944**)
- Bolt Kit, Cross Over Arch Top Mount (**10013022**)

# INSTALLATION

**Tools**

1. Safety Glasses
2. 1/2" Drive Ratchet Set
3. Standard Combo Wrenches
4. Impact Wrench Set
5. 4' Level
6. 3 lb. Sledgehammer
7. 1" Hammer Drill
8. Pry Bar
9. Tape Measure
10. Permanent Marker

**Consumables**

1. PTFE Paste or PTFE Tape

**Work Force**

(2) person

**Time (assuming no problems)**

2.00 - 3.00 hours

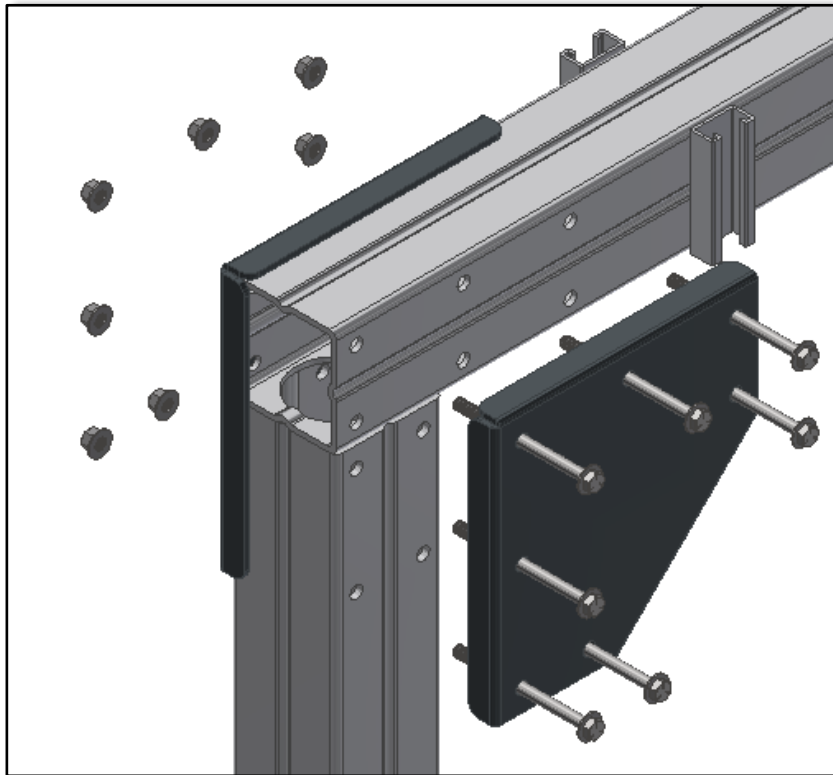
**Installation Steps**

1. Determine where the arch is to be installed. (See **Figure #4 – Tunnel Layout Diagram**)
2. Sweep any debris from where the arch will stand.
3. Place the arch mounting posts on the passenger and driver sides according to the dimensions on the tunnel layout diagram. DO NOT permanently anchor the base plates.

**Note:** Before lagging the frame into position have a second person double check all measurements against your tunnel equipment layout drawings to ensure all measurements were performed correctly.

4. Check that the side legs are vertically plumb, and the top cross beam is level.
5. Shim the mounting pads as necessary to achieve level and plumb conditions.
6. Anchor the mounting pads to the concrete floor with the wedge anchors provided.

The top beam is secured to the legs with aluminum plates. Sonny's recommends using an **anti-seize lubricant** on the plate bolts.



## MAINTENANCE

<b>FOR THE FIRST MONTH OF OPERATION CHECK ALL HARDWARE AND FITTINGS FOR TIGHTNESS EACH WEEK!</b>
--

### DAILY

- Overlook equipment daily and clean signage daily. Do not use a pressure washer when cleaning the signs.

### MONTHLY

- Inspect all frame hardware for tightness.

## CUSTOMER SERVICE

Need more help?

For questions regarding **installation and/or operational issues and settings**, please contact Sonny's Tech Support at extension 234 or email at [Sonnys-Support@SonnysDirect.com](mailto:Sonnys-Support@SonnysDirect.com).

To order **replacement parts**, contact Customer Service at ext. 200, email us at [CustomerService@SonnysDirect.com](mailto:CustomerService@SonnysDirect.com) or visit us on the web at [www.SonnysDirect.com](http://www.SonnysDirect.com).

Toll Free Main Line	800-327-8723
Local Number	954-720-4100
Customer Service	Option 3
Equipment Sales	Option 4
Technical Support	Option 5

***Thank you for being a Sonny's car wash equipment owner!***

***From all of us here at***





## WARRANTY

### **SONNY'S ENTERPRISES, INC. FACTORY LIMITED LIFETIME WARRANTY**

Equipment manufactured by SONNY'S ENTERPRISES, INC. is warranted to be free from defect in material and workmanship. Welded metal framework and other non-moving, non-wearable fabricated metal components manufactured by Sonny's are warranted for the life of the equipment to the original purchaser. Fabricated metal wearable surface and moving components manufactured by Sonny's are warranted for a period of one (1) year to the original purchaser of the equipment.

All components assembled to Sonny's equipment that are manufactured by others are warranted by the appropriate manufacturer and subject to that manufacturer's limited warranty. Contact Sonny's for the specific information on other component manufacturer's warranty terms. All new cloth shipped with new Sonny's equipment is warranted for a period of one (1) year or 80,000, whichever occurs first.

This warranty is not assignable or transferable. The warranty period begins the first day following installation or 30 days from the original invoice date, whichever occurs first. The Seller's liability shall be limited to repair or replacement of materials found to be defective within the warranty period. In the event of repair or replacement this limited warranty is noncumulative. The Purchaser must supply the Seller with immediate written notice when any defects are found. The Seller shall have the option of requiring the return of defective material to establish the Purchaser's claim. Neither labor nor transportation charges are included in this warranty. Transportation damage claims are to be submitted to the carrier of the damaged materials.

This warranty is based upon the Purchaser's reasonable care and maintenance of the warranted equipment. It does not apply to any equipment which has been subject to misuse, including neglect, accident or exposure to harsh chemicals or chemicals that react violently with water, organic acids (e.g. acetic acid), inorganic acids (e.g. hydrofluoric acid), oxidizing agents (e.g. peroxides), and metals (e.g. aluminum). Chemicals corrosive to aluminum alloys, carbon steel, and other metals. Nor does it apply to any equipment which has been repaired or altered by anyone not so authorized by Sonny's. Further, the equipment must be properly installed with proper accuracy of all specified plumbing, electrical, and mechanical requirements. This warranty does not apply to normal wear and tear or routine maintenance components.

EXCEPT AS EXPRESSLY STATED HEREIN, SONNY'S SHALL NOT BE LIABLE FOR DAMAGES OF ANY KIND IN CONNECTION WITH THE PURCHASE, MAINTENANCE, OR USE OF THIS EQUIPMENT INCLUDING LOSS OF PROFITS AND ALL CLAIMS FOR CONSEQUENTIAL DAMAGES. THE LIMITED WARRANTY EXPRESSED HEREIN IS IN LIEU OF ALL OTHER WARRANTIES EXPRESSED OR IMPLIED. SONNY'S NEITHER ASSUMES NOR AUTHORIZES ANY PERSON TO ASSUME FOR IT ANY OTHER OBLIGATION OR LIABILITY IN CONNECTION HERewith.