

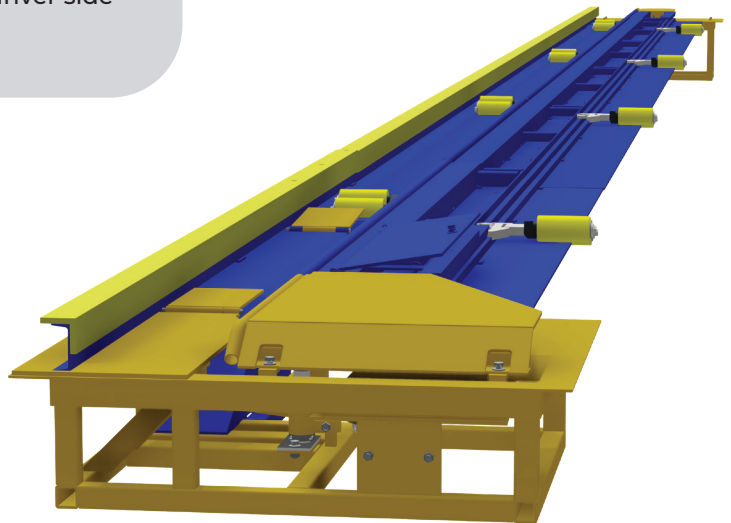


Surface Conveyor

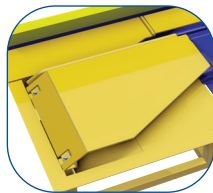
Sonny's heavy-duty Surface Conveyor requires only a small pit at the entrance and exit of your car wash. This is the ideal solution for existing buildings or where other constraints call for a limited amount of concrete work.

Features

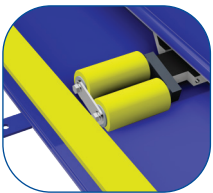
- 14ft roller spacing with reliable air-over-oil chain tensioning system for faster servicing with less downtime.
- Features a 5/16in base plate and 5/8in steel log chain for incredible strength, reliability, and life expectancy.
- 3in x 3in x 1/2in UHMW guide rail is installed on the driver side to provide wheel rim protection.



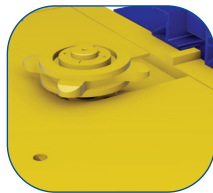
Heco direct drive gear box with hydraulic motor.



Easy maintenance through access doors.



Driver-side guide rail covered with UHMW plastic to protect rims.



New log chain case hardened sprocket for maximum durability.

Specifications

Tire Clearance Required	12-1/2in
Vehicle Clearance Required	4-1/2in
Hydraulic Required	Varies, based on length
Air Required	2CFM @120PSI
Floor Plate	5/16in
Finish	Painted Steel

Call 1-800-327-8723 to Order

Join Sonny's
OneWash
and Save

Get Exclusive Member Benefits!
www.sonnysdirect.com/onewash

Surface Conveyor Configuration Options:

1 All Roller-Up (ARU):

Simple and reliable, Sonny's All Roller-Up Conveyor provides an affordable option for low-volume or hand wash tunnels to utilize a conveyor where building constraints call for a limited amount of concrete work.

2 Front Wheel Pull (FWP):

Vehicle is driven onto the surface conveyor until the front wheel of that vehicle passes the roller-up opening in the conveyor. The automated roller-up cylinder sends a roller to pull the front driver-side wheel and send the vehicle through the wash process.

3 Rear Wheel Push (RWP):

A specialized section allows the roller to surface further along the conveyor path. Once the vehicle is placed over the conveyor, the automated roller-up cylinder sends a roller to push the back driver side wheel and send the vehicle through the wash process.

Conveyor Length	1 All Roller-Up	2 Front Wheel Pull On Demand	3 Rear Wheel Push On Demand
45ft	\$36,823.62	\$39,744.30	\$44,596.73
50ft	\$39,310.04	\$42,230.72	\$47,086.99
55ft	\$40,641.00	\$43,556.56	\$48,414.11
60ft	\$43,127.42	\$46,041.70	\$50,900.53
65ft	\$44,788.88	\$47,721.09	\$52,576.08
70ft	\$47,276.58	\$50,207.51	\$55,065.06
75ft	\$48,617.79	\$51,532.06	\$56,397.30
80ft	\$51,465.45	\$54,026.17	\$58,883.72
85ft	\$52,768.23	\$55,696.59	\$60,555.43
90ft	\$55,268.74	\$58,190.70	\$63,244.25
95ft	\$56,594.58	\$59,516.54	\$64,374.09
100ft	\$59,087.40	\$62,002.96	\$66,860.51
105ft	\$60,759.11	\$63,674.66	\$68,532.21
110ft	\$63,245.53	\$66,161.08	\$71,026.32
115ft	\$64,577.77	\$67,492.04	\$72,349.59
120ft	\$67,065.47	\$69,979.74	\$74,837.30
125ft	\$68,388.74	\$71,344.01	\$76,163.13
130ft	\$70,876.44	\$73,798.41	\$78,655.96

Material ID: CONV_SUR

Sonny's Conveyor Tracking Pad

Reduce the potential for vehicles to jump the conveyor when pulled by the front wheel. Sonny's Conveyor Tracking Pad fine tunes vehicle alignment on an ultra-low friction surface to prevent damage to rims and conveyor rails. Material is HDPE Black and Pad Thickness .250in. Recommended for front wheel and surface conveyor.



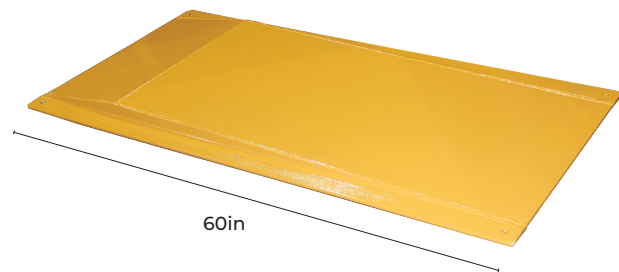
Item No.	Description	Price
10013240	Conveyor Tracking Pad, 30in W x 1/4in Thick, HDPE Black, UV Chemical Resistant Low Friction PVC 130ft Roll	\$3,442.12
10013084	Conveyor Tracking Pad, 30in W x 1/4in Thick, HDPE Black, UV Chemical Resistant Low Friction PVC, 100ft Roll	\$2,808.49
10013083*	UHMW Conveyor Tracking Pad Retainer Bar, 1/2in 10ft L	\$137.68
10013265	Sonnys Conveyor Tracking Pad Anchors, 1/4in x 1-1/2in, Box of 100	\$41.67

*Requires 1/4in x 2-1/4in hammer-set anchor every 12in

Sonny's Conveyor Kick Off Plate

Guides vehicle tire off the exit end of the conveyor for a smoother transition and to prevent roller jams

- 5/16in thick steel construction
- Pre-drilled anchoring holes for easy installation
- Recommended for front wheel and surface conveyor



Item No.	Description	Price
20003743	Kick-Off Plate, 5/16in Thick, Steel for 5ft Conveyor Sonnys	\$875.86