



SF Top Mount Side Washers

Sonny's SF Top Motor Side Washers spin against vehicle travel, opposite of our Wrap-Arounds allowing wash material to get into different areas for thorough cleaning. You'll need both to deliver a clean car, and an effective tunnel system requires at least one side washer.

Features

- Top Motor design provides easy access for preventive maintenance.
- Multi-Tiered Hub cleans heavy rocker panel dirt while delivering deep gentle cleaning to contoured sides and mirror backs.
- Adjustable shock absorbers for accurate pressure and material penetration.

Specifications

Footprint Length	74in	
Footprint Width	144in	
Height	142in	
Vehicle Clearance	90in	
Water Inlet	1/2in	
Hydraulic Option	3GPM	6GPM
Electric Option	3-Phase/208-460V	

Material Options

Hush Brush Foam	Design that reduces noise and allows for better contact with the durability of NEOGLIDE® Foam Wash Material.
Permacolor®	The industry standard cloth. Durable, easy to clean, long-lasting and affordable.



SF 63in Hub Side Washer shown with optional Pre-Plumbed Cross-Over Arch and Optional Powder Coating.

Hub Configuration

Side Washer	Hub	Slots
SF 18in	6in x 18in Unihub	32
SF 21in	6in x 21in Unihub	32
SF 28in	6in x 28in Unihub	32
SF 35in	6in x 35in Unihub	32
SF 50in	6in x 22in (Top) 10in x 28in (Bottom)	16 Top / 108 Bottom
SF 63in	6in x 35in Hub (Top) 12in x 28in (Bottom)	28 Top / 66 Bottom

CUSTOM COLOR POWDER COATING OPTION
Contact a Sonny's Sales Representative for details.

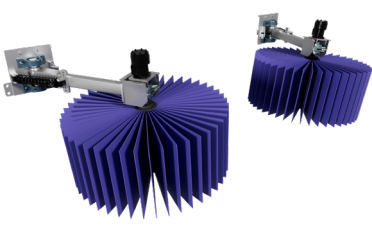


Call 1-800-327-8723 to Order

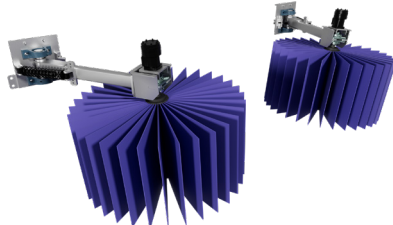
Join Sonny's
OneWash
and Save

Get Exclusive Member Benefits!
SonnyDirect.com/onewash

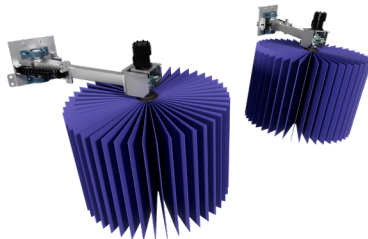
SF Top Mount Side Washers



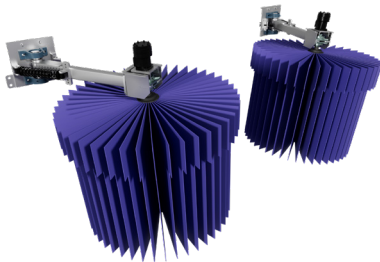
SF18 HUB SIDE WASHER ATTACHMENT



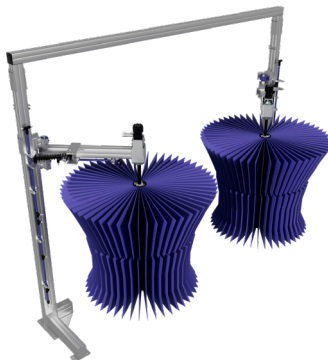
SF21 HUB SIDE WASHER ATTACHMENT



SF28 HUB SIDE WASHER ATTACHMENT



SF35 HUB SIDE WASHER ATTACHMENT



SF50 HUB SIDE WASHER WITH PRE-PLUMBED CROSSOVER ARCH



SF63 HUB SIDE WASHER WITH PRE-PLUMBED CROSSOVER ARCH

SF Top Mount Side Washer Configuration Options

SIDE WASHER DIMENSIONS + MATERIAL						FREE STANDING LEGS		CROSSOVER ARCH	
SF 18in	SF 21in	SF 28in	SF 35in	SF 50in	SF 63in	Hydraulic	Electric	Hydraulic	Electric
●						\$9,269.00*	\$10,612.00*	\$11,496.00*	\$12,839.00*
	●					\$9,423.00*	\$10,766.00*	\$11,651.00*	\$12,993.00*
		●				\$10,263.00*	\$11,606.00*	\$12,491.00*	\$13,833.00*
			●			\$11,018.00*	\$12,361.00*	\$13,246.00*	\$14,588.00*
				●		\$14,310.00*	\$16,389.00*	\$16,181.00*	\$17,753.00*
					●	\$14,973.00*	\$17,962.00*	\$16,389.00*	\$19,377.00*

FOR MORE CONFIGURATIONS NOT LISTED ABOVE CONTACT YOUR SONNY'S SALES REPRESENTATIVE

Material ID: BRUSH_TM_V1.0

*All prices listed above include the NEOGLIDE® Hush material



Call 1-800-327-8723 to Order

SonnysDirect.com | 800-327-8723

© 2024 SONNY'S Enterprises, LLC. All prices & availability subject to change without notice.