



TBG300™ Tire Brushes

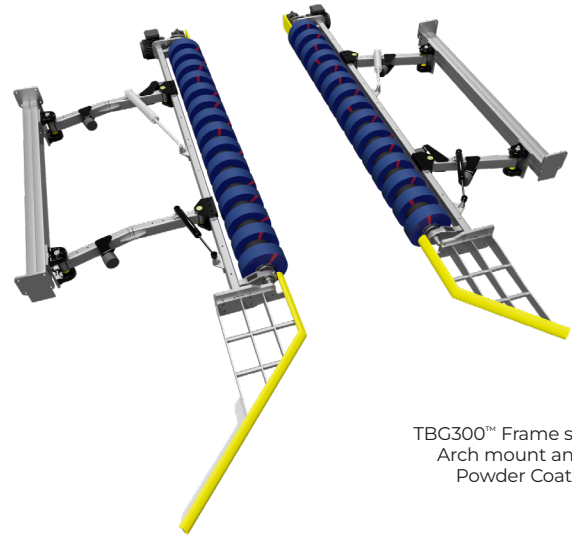
Sonny's TBG300™ Tire & Wheel Brushes provide a high performance frame that allows you to choose the brush that's right for your car wash.

Features

- Choose from four rebuildable brush designs for your specific requirements, or upgrade to a new style brush in the future.
- Attach your TBG300™ directly underneath a Top Brush or SFM901 Front-to-Back Mitter to increase wash capacity in less space.
- Height adjustable extended Banana Peel Guide Rails that deliver lower clearance for safer operation.

Specifications

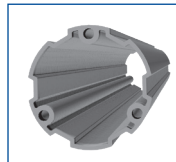
Footprint Length	184in
Footprint Width	144in
Hydraulic Option	6GPM
Electric Option	1HP 3-Phase/208-460V



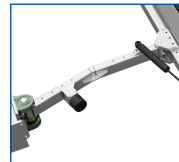
TBG300™ Frame shown with Arch mount and Optional Powder Coating Option



Height adjustable extended Banana Peel Guide Rails deliver lower clearance for safer operation.



Replace only worn sections of the brush to save money on maintenance with the Unica Hub design.



Redesigned arms provide wider clearance with fewer bearings and grease points.



Cobra, Poodle, Bison, and Ninja Brush available to maximize results in any environment.

CUSTOM COLOR POWDER COATING OPTION
Contact a Sonny's Sales Representative for details.



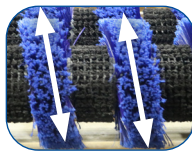
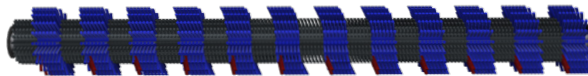
Call 1-800-327-8723 to Order

Join Sonny's
OneWash
and Save

Get Exclusive Member Benefits!
SonnyDirect.com/onewash



Replaceable Unica Rings



360° Performance

Side-to-side motions washes both wheels and tires from all directions for superior cleaning.

Flange	Hub
3-Bolt	4 Key-In

TBG300 COBRA Tire Brush™

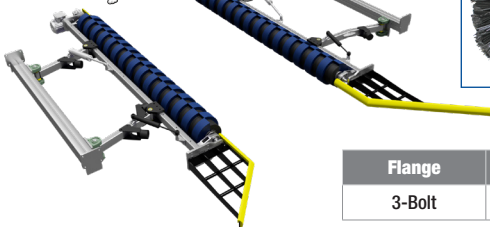
Sonny's exclusive COBRA Tire Brush is engineered to reach deeper into rims than ever before and provides better cleaning power to tires of all sizes.

Description	Hydraulic	Electric
TBG300 Tire Brush with Cobra Brush™	\$15,334.00	\$17,972.00

Material ID: TIRE_BRUSH_V1.0



Replaceable Unica Rings



Replaceable Unica Rings

Flange	Hub
3-Bolt	4 Key-in

TBG300 Poodle Brush Plus™

Sonny's exclusive rebuildable Poodle Brush Plus features one short and one tall molded ring with flagged bristle material that helps reach into the wheel.

Description	Hydraulic	Electric
TBG300 Poodle Brush Plus™	\$13,890.00	\$16,556.00

Material ID: TIRE_BRUSH_V1.0

TBG300 Bison Brush™

Sonny's exclusive rebuildable Bison Brush alternates short and long flagged bristles on each brush to provide great cleaning power to wheels of all sizes while reaching deeper into rims.

Description	Hydraulic	Electric
TBG300 Tire Brush with Bison Brush™	\$14,065.00	\$17,566.00

Material ID: TIRE_BRUSH_V1.0



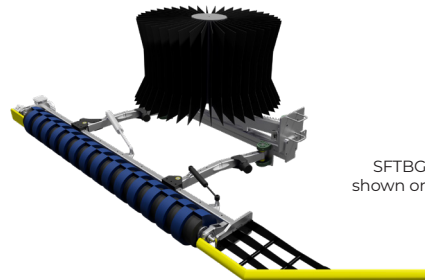
Replaceable 6in sections

TBG300 Ninja Brush™

Sonny's exclusive and rebuildable brush that features closed-cell foam fingers to reach deep in the wheel to safely clean the lowest profile and most intricate rims.

Description	Hydraulic	Electric
TBG300 Tire Brush with Ninja Brush™	\$16,979.00	\$18,277.00

Material ID: TIRE_BRUSH_V1.0



SFTBG18 Rocker Brush shown on passenger side

SFTBG18 Rocker Brush

Sonny's SFTBG18 Rocker Brush mounts to the frame of our TBG300 Tire Brush to provide dramatic wheel and lower surface cleaning results in less tunnel space. Standard with Hydraulic motor.

Description	PermaColor	NeoGlide	NG Hush
SFTBG18 Brush Set	\$4,178.00	\$4,682.00	\$4,627.00

Material ID: TIRE_BRUSH_V1.0