



Support Equipment

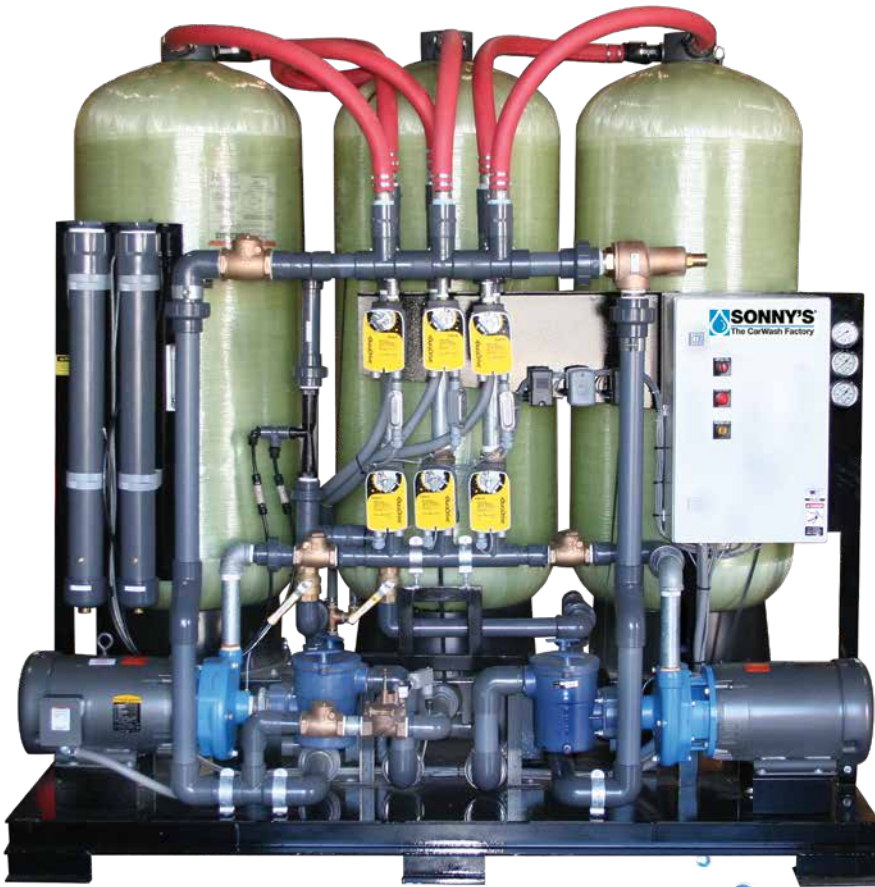
Water Treatment Systems



Sonny's Water Reclaim & Odor Control



- 120GPM Continuous Reclaim
- Patented Odor Control System
- Automatic Backwashing



Increase Customer Satisfaction With **LESS Maintenance!**



www.SonnysDirect.com

© 2018 SONNY'S Enterprises, LLC. All prices & availability subject to change without notice.

Support Equipment

Water Treatment Systems

WASH
MORE
CARS

Why choose Sonny's 120GPM Poseidon™ Water Reclaim?

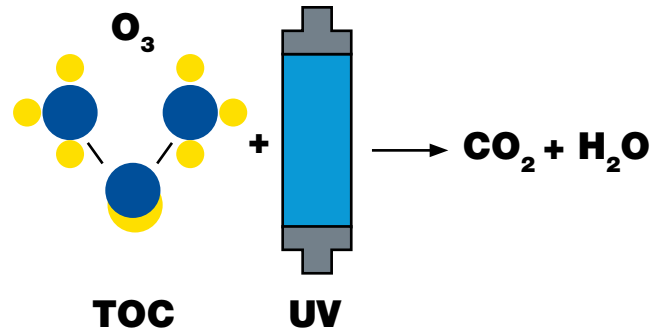
Sonny's 120GPM Poseidon Water Reclaim & Odor Control System is engineered to reduce utility consumption and automatically maintain itself while delivering continuously clean, odor-free water to meet wash requirements.

- **Triple filtration system with specially engineered 5-micron water output** delivers 120GPM on-demand performance with lower utility consumption.
- **Smart PLC motor control center** automatically flushes and ozonates the system and conveyor pit prior to opening, eliminating stagnant odors.
- **Patented odor control system** generates longer-lasting ozone capable of continuously flushing the conveyor chain & rollers with ozonated water to extend life and performance.
- **Continuous operation, even during backflushing**, delivers 80GPM from two filters while the third is cleaned.
- **Independent electric solenoids** automatically maintain wash-water flow requirements to meet demand.
- **Flexible tubing eliminates plumbing requirements** for preventive maintenance and alignment of tanks.
- **Ships pre-plumbed and mounted to skid** with adjustable plumbing from either side for easy installation.

Technical Specifications

- 2 - 7½hp TEFC closed coupling motor / pump
- Designed flow rate 120gpm
- Foot valves
- 120V AC signal from car wash controller
- Manual on — off-automatic selector switch
- UL listed control panel
- 40in W x 84in L x 84in H
- 208-240/480 VAC, 3PH, 60Hz
- 120V AC control voltage
- SCH 80 PVC piping

Patented Odor Control



Sonny's Poseidon patented odor control system uses Ozone (O₃) and UV Light to oxidize odor causing Total Organic Compounds (TOC) down to Carbon Dioxide (CO₂) and Water (H₂O).

Standard Features

- PLC controlled
- Low water shut-down protection
- Automatic back-flushing
- Time controlled
- Pump no-flow protection
- System status light and alarm
- Display screen for system operators
- Proven odor control
- Skid pre-plumbed and pre-wired
- Pre-filter baskets to protect pumps mounted on skid
- Continuous filtered reclaim water flow even during back-flushing
- Powder-coated frame
- Skid-mounted
- 2in fresh water solenoid override
- 5-micron filtration
- Pressure relief safety control valve
- No compressed air required

Designed by Sonny's
built by SoBrite



Item #	Description	Price
20006011	Poseidon, Reclaim and Deodorizer System	\$52,868.00



Support Equipment

Water Treatment Systems



Sonny's Economatic Water Reclaim System

A new efficient Water Reclaim System that answers the call for an economically priced unit that filters particulate matter. Single, double, or triple hydro-cyclonic action. Automatic fresh water overrides in the event of low water or loss of prime. UL Listed control panel. Easy retrofit applications with a small footprint.

Standard Features

- Hydro-cyclonic particle separators
- 120V AC powered control panel with hand /off / auto switch & on /alarm light
- Patented Aqua Prep odor control technology
- TEFC, Self-Priming Pump
- 3-phase 208-230/460V AC 60 HZ
- (2) Pump pressure gauges
- (1) Air flow meter
- Automatic fresh water override solenoid, with low water float switch & low flow alarm
- Dimensions: 48in W x 30in D x 66in H



Item #	Description	Price
10010629	Economatic Reclaim System, ERS100 100GPM	\$26,875.00
10010630	Economatic Reclaim System, ERS150 150GPM	\$32,180.00
10010632	Economatic Reclaim System, ERS50 50GPM	\$24,300.00



Sonny's SROC100 Stand-Alone Odor Control System

The SROC100 uses a proven and accepted way of producing ozone (O₃), a powerful and proven oxidant. Air is pulled across the surface of a single Ultra Violet (UV) lamp. The Oxygen (O₂) is converted to ozone (O₃). This ozone stream is then injected into the dirty pit water stream. The highly reactive ozone is then discharged into the center pit of the car wash. No air dryer is required with this technology. A high concentration of ozone is not required when used efficiently.

Standard Features

- Can be added to any existing reclaim system
- Rids your car wash of the unpleasant odors typically associated with recycled water
- Stand-alone unit operates independent of your existing recycle wash reclaim system
- Operates on automatic and manual settings
- Water is pulled from the last collection (sediment) pit and discharged into the center trench of the car wash, providing full flow that disinfects the recycled water
- PLC controlled with display screen for system operation
- Pre-plumbed and pre-wired
- 1- UV Lamp, optic fiber lens for UV lamp inspection
- 30GPM closed coupling pump with pre-filter
- 1HP 208-240/480V AC 3PH, 60Hz

Item #	Description	Price
20006494	SROC100 Odor Control - Stand Alone	\$7,920.00





Support Equipment

Water Treatment Systems



Velocity Water Softeners

The benefits of a properly sized Velocity Water Softener are plentiful for optimal operation of a car wash. Scale-building contaminants are an extensive problem that is best resolved with a water softener, and Velocity can help size a system to exactly what you need. In addition to the high quality soft water that a Velocity Water Softener provides, operating costs and chemical costs of a car wash will be lower as well. Equipment performance and lifespan will be extended, and your customers will receive a car wash experience that will keep them coming back again and again.



Velocity 1.00in & 1.25in (2-Tank) Water Softeners (VS2-100/125 Series)

- Ideal for feeding RO's and chemical applications – flows up to 28 gpm
- Durable, corrosion-resistant Noryl bodied control valve(s)
- Lower cost Installations – includes by-pass assembly with In/out valves
- Advanced controller - simple 1-step programming
- Single tank, twin alternating and multiple tank configurations for higher flow rates



Description	Capacity (Med./ Max.)	Flow Rate (Service/ Peak)	Price
Water Softener, 1in Pipe	25,000 / 30,000	15gpm / 22gpm	\$1,633.00
Water Softener, 1in Pipe	50,000 / 60,000	18gpm / 25gpm	\$2,151.00
Water Softener, 1in Pipe	75,000 / 90,000	20gpm / 27gpm	\$3,245.00
Water Softener, 1.25in Pipe	62,500 / 75,000	23gpm / 32gpm	\$3,043.00
Water Softener, 1.25in Pipe	100,000 / 120,000	26gpm / 35gpm	\$4,119.00
Water Softener, 1.25in Pipe	125,000 / 150,000	28gpm / 37gpm	\$4,993.00

Velocity 1.5in & 2in (2-Tank) Water Softeners (VS2-150/200 Series)

- Flow rates up to 100 gpm for softening all water in wash
- Heavy duty construction – brass bodied valves and SS flow meters
- Advanced controller – digital display of flow rate, capacity and total water
- Multiple tank configurations available



Description	Capacity (Med./ Max.)	Flow Rate (Service/ Peak)	Price
Water Softener, 1.5in Pipe	100,000 / 125,000	40gpm / 56gpm	\$6,151.00
Water Softener, 1.5in Pipe	125,000 / 150,000	45gpm / 62gpm	\$6,958.00
Water Softener, 1.5in Pipe	175,000 / 210,000	47gpm / 62gpm	\$7,978.00
Water Softener, 1.5in Pipe	250,000 / 300,000	53gpm / 69gpm	\$9,855.00
Water Softener, 2in Pipe	125,000 / 150,000	62gpm / 85gpm	\$8,415.00
Water Softener, 2in Pipe	150,000 / 180,000	64gpm / 90gpm	\$8,975.00
Water Softener, 2in Pipe	200,000 / 240,000	74gpm / 101gpm	\$10,694.00
Water Softener, 2in Pipe	250,000 / 300,000	71gpm / 100gpm	\$11,376.00

Velocity Pre-Plumbed By-Pass Manifold (PBM Series)

A Velocity pre-plumbed header will reduce your time, labor and cost to get your water softener installed and running. Produced in copper or PVC, your header will include all of the valves and unions for easy maintenance, and are produced specific to the flow requirements of your site.

Description	Price
Pre- Plumbed Headers, 1.5in Pipe, copper	\$2,367.00
Pre- Plumbed Headers, 2in Pipe, copper	\$3,389.00



Support Equipment

Water Treatment Systems

**WASH
MORE
CARS**

Velocity Reverse Osmosis Systems

A Reverse Osmosis System is necessary to leave a shiny, spot-free vehicle in your car wash. This also includes glass and chrome, providing a completely satisfying experience for your customers and also for the car wash operator. When you install a Velocity Water Works RO, you are choosing a system that has been designed and built by experts with over 30 years of collective experience constructing the systems that keep your car wash's water running spot-free and your customers coming back. Only the finest components are used to build your Velocity System, right down to the stainless steel frame.

- Production capacities for any application – from 1,800 gpd up to 28,000 gpd
- Stainless steel frames in wall mount (hinged) and free-standing designs
- VROC RO control digitally displays TDS and system performance/status
- Automatic membrane flush, low pressure safety shut-off and auto system re-start
- Carbon filter comes integrated into free standing RO frames (9,600 gpd and smaller)
- Includes RO production float switch, carbon filter (auto backwashing) and 1.5 hp re-pressurization pump (15gpm @ 50psi) with fresh water bypass



Description	Mounting*	Price
RO, Spot Free, 1,800gpd	Wall	\$8,670.00
RO, Spot Free, 2,400gpd	Wall	\$9,012.00
RO, Spot Free, 4,800gpd	Wall	\$9,866.00

**Also available in Free Standing Models*

Description	Mounting	Price
RO, Spot Free, 7,200gpd	Free Standing	\$12,382.00
RO, Spot Free, 9,600gpd	Free Standing	\$14,274.00
RO, Spot Free, 12,000gpd	Free Standing	\$16,889.00
RO, Spot Free, 14,400gpd	Free Standing	\$18,603.00
RO, Spot Free, 18,800gpd	Free Standing	\$22,621.00
RO, Spot Free, 28,000gpd	Free Standing	\$31,904.00

Velocity VFD Booster Pump Systems

A Velocity VFD Booster Pump System will maintain a constant pressure of water for your car wash equipment, no matter the demand. This complete turnkey system is designed for dependable performance and long life.

This system includes a stainless steel frame, inlet check valve and outlet assembly (brass, stainless steel or PVC) that includes a pressure gauge, relief valve, pressure transducer, 2.0" shut-off valve and safety shut-off flow switch.

Description	Price
3hp Pump, 60gpm	\$5,086.00
5hp Pump, 100gpm	\$6,628.00
5hp Pump, 140gpm	\$7,782.00



Velocity Reject Water Recovery Systems

Capture your RO reject water with a Velocity Reject Water Recovery System instead of sending it down the drain. The water collected by this system can be delivered to other wash applications, reducing your water and sewer bills. System sizes are available to fit a wide range of applications, no matter the volume of demand.

Description	Price
1/2hp Submersible Pump (120V), 6ga Pressure Tank, 15gpm System	\$2,272.00
1.0hp Pump, 19gal Pressure Tank, 20gpm System	\$2,370.00
2.0hp Pump, 35gal Pressure Tank, 40gpm System	\$2,596.00
3.0hp Pump, 35gal Pressure Tank, 80gpm System	\$3,532.00



****All Reject Systems include (LLF) Low Limit Tank Fill System.
Deduct: \$335.00 if Low Limit Switch Shut-Off in place of LLF**



Support Equipment

Water Treatment Systems



Diamond H2O Water Softeners

High water quality is an essential component to any successful car wash operation. Soft water will improve the efficiency and life of your RO equipment and membranes, while at the same time reducing overall chemical costs per car by 10% or more! If you've ever faced challenges with scalling or plugged nozzles due to hardness/scale, then a water softener from Diamond H2O is just the solution you need.



Freedom 1in and Patriot 1.25in Twin Water Softener

- Up to 28gpm continuous and 37gpm peak flow rates
- Built to last - corrosion resistant Norell control valve body
- Integrated flow meter
- Fully programmable regeneration settings
- Turnkey system - interconnecting plumbing with bypass assembly included



Description	Capacity	Flow Rate Continuous/Peak)	Price
Water Softener, 1in Pipe	60,000	16gpm / 24gpm	\$2,624.00
Water Softener, 1in Pipe	90,000	18gpm / 28gpm	\$3,971.00
Water Softener, 1in Pipe	180,000	20gpm / 28gpm	\$6,058.00
Water Softener, 1.25in Pipe	75,000	23gpm / 32gpm	\$3,555.00
Water Softener, 1.25in Pipe	90,000	23gpm / 32gpm	\$4,602.00
Water Softener, 1.25in Pipe	150,000	26gpm / 35gpm	\$6,073.00

Patriot 1.5 in and 2in Twin Water Softener

- Up to 99 gpm continuous and 130 gpm peak flow rates
- Built tough - epoxy coated, lead-free brass valve body and stainless steel flow meter
- Fully programmable regeneration settings



Description	Capacity	Flow Rate Continuous/ Peak)	Price
Water Softener, 1.5in Pipe	90,000	35gpm / 54gpm	\$7,500.00
Water Softener, 1.5in Pipe	150,000	46gpm / 64gpm	\$9,066.00
Water Softener, 1.5in Pipe	210,000	50gpm / 69gpm	\$9,985.00
Water Softener, 1.5in Pipe	300,000	53gpm / 71gpm	\$12,803.00
Water Softener, 2in Pipe	150,000	59gpm / 89gpm	\$11,266.00
Water Softener, 2in Pipe	180,000	72gpm / 103gpm	\$11,895.00
Water Softener, 2in Pipe	210,000	69gpm / 100gpm	\$12,191.00
Water Softener, 2in Pipe	300,000	75gpm / 105gpm	\$15,003.00

Pre-Plumbed Copper Headers

Concerned about costly delays and expensive plumber bills during the installation of your twin water softener? With a pre-plumbed header, all you have to do is connect to the common inlet, outlet and drain and you are ready to start it up!

Description	Sch. 80 PVC	Copper
Pre-Plumbed Copper Header, 1.5in Pipe	\$1,746.00	\$2,989.00
Pre-Plumbed Copper Header, 2in Pipe	\$2,870.00	\$4,228.00



Support Equipment

Water Treatment Systems

**WASH
MORE
CARS**

Diamond H2O Reverse Osmosis Systems

If you want to wow your customers with the most sparkling clean vehicle they've ever seen, then a Reverse Osmosis System from Diamond H2O is what you need. With water this clean, you can increase profitability by reducing or even eliminating the need for hand drying and still deliver a crystal clear finish to every wash.



- Available in free-standing (DFS) or wall mount (DWM) to fit any space
- Capacities range from 2,400 to 28,000 gallons per day - let us size it for you!
- Powder coated steel frame, with stainless steel option available
- ClearFLO RO system controller with digital display
- Automatic membrane flush to extend membrane life and save you money
- Automatic safety shut-off and system restart protection
- **Carbon filter included, delivery pump sized and sold separately**

Description	Mounting Style	Price
RO Spot Free 2,400 gpd	Wall	\$8,224.00
RO Spot Free 4,800 gpd	Wall	\$9,295.00
RO Spot Free 7,200 gpd	Free Standing	\$11,593.00
RO Spot Free 9,600 gpd	Free Standing	\$14,144.00
RO Spot Free 12,000 gpd	Free Standing	\$18,054.00
RO Spot Free 14,000 gpd	Free Standing	\$19,701.00
RO Spot Free 18,000 gpd	Free Standing	\$25,204.00
RO Spot Free 20,000 gpd	Free Standing	\$30,731.00
RO Spot Free 28,000 gpd	Free Standing	\$43,018.00

Propel Reject Capture Systems

With a Propel Reject Capture System you can reduce waste and lower your water and sewer bills by capturing the reject water from the RO and using it for another application in your carwash. Control box comes with dual float switches - fresh water bypass (included) and low limit shut off - pressure gauge and switch and 19 or 35 Gallon Pressure Tank. (Flow rates all @ 30 psi)



Description	Price
Propel Reject Capture System, 0.5HP / 15gpm	\$3,006.00
Propel Reject Capture System, 1HP / 40gpm	\$3,392.00
Propel Reject Capture System, 1.5HP / 55gpm	\$3,764.00
Propel Reject Capture System, 2.5HP / 70gpm	\$4,036.00

Propel Booster Pump Systems

The Propel Booster Pump System is designed to maintain constant water pressure for the demands of any car wash. Fully adjustable with a simplified VFD controller, this system will solve all the problems caused by inconsistent incoming water pressure and flow rate. Complete with pressure tank/gauge/transducer, relief valve, shutoff switch, water resistant enclosure with cooling fan - all in a compact footprint.



Description	Price
Propel Booster Pump System, 3HP / 70gpm	\$8,318.00
Propel Booster Pump System, 5HP / 100gpm	\$8,439.00
Propel Booster Pump System, 5HP / 140gpm	\$9,507.00