



ARCH SERIES CANOPY

Installation Instructions

AVI Care Care LLC

297 Kingsbury Grade, Suite 1064-4470

Lake Tahoe, NV 89449-4470

Toll Free (888) 628-8682

www.autovacinc.com

CONTENTS

I. CAUTION/WARNINGS	3
II. PARTS LIST	4
III. TOOLS REQUIRED	4
IV. PRELIMINARY SETUP	5
V. ASSEMBLY/DISASSEMBLY	6
PRE-INSTALLATION	6
ASSEMBLY/DISASSEMBLY	11

I. CAUTION/WARNINGS

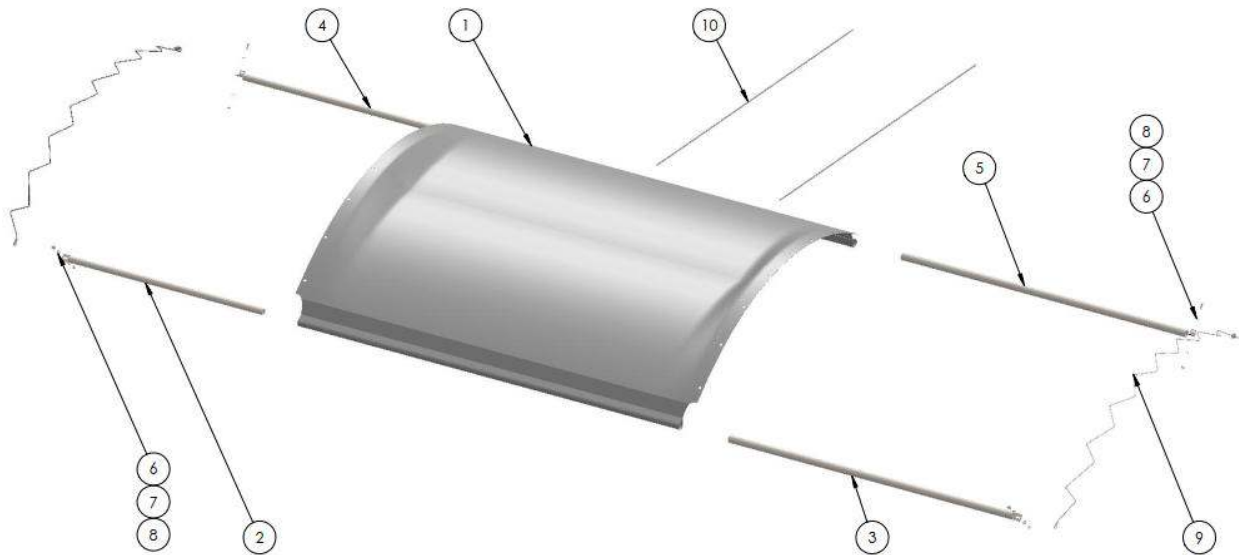
In as much as the weather is unpredictable, good judgment and common sense must be incorporated within installation guidelines. It is the responsibility of the installer/maintainer to determine the severity of the weather, proper time and method of installation and/or take down. **Note: We recommend that snow and ice be removed from the canopy surface as soon as possible because accumulation will damage the tent or fabric structure.**

This product has been manufactured for use as a temporary sunshade structure. For the safety of all occupants, evacuation is recommended if threatening weather occurs, or if there is any doubt concerning the safe use of this product.

Proper safety equipment should be used at all times to insure a safe installation and take down. We suggest a careful evaluation be made to determine safety equipment needed, such as hard hats, steel-toe shoes, safety glasses and other as required. It is our desire that all installations are safe. Please be aware of surroundings, i.e., sharp edges, water lines, electrical lines, etc. and above the canopy such as power lines and telephone lines.

AutoVac stands behind its products in accordance with its standard Terms and Conditions of sale. A copy of our Terms and Conditions of Sale can be obtained by contacting AutoVac at the telephone number and/or address on this document.

II. PARTS LIST



ITEM NO	DESCRIPTION	QTY
1	"A" SERIES ARCH CANOPY	1
2	REAR SUPPORT ROD EXTENSION	1
3	REAR SUPPORT ROD	1
4	FRONT SUPPORT ROD EXTENSION	1
5	FRONT SUPPORT ROD	1
6	BOLT, 3/8-16 X 1 1/2", HEX, ZINC PLATED STEEL	4
7	WASHER, FLAT, 3/8, ZINC PLATED STEEL	8
8	NUT, NYLON LOCK, 3/8-16	4
9	CABLE, STRANDED WIRE, ONE END LOOPED	2
10	ROD, 1/4 DIA, FIBER	2

III. TOOLS REQUIRED

1. 9/16 socket driver
2. 1/2 socket driver
3. Cable cutter
4. Electric saw

IV. PRELIMINARY SETUP

The following is a preliminary setup to verify all parts are supplied and that the canopy is visually inspected to be sized for the appropriate lane, free from rips, and/or defects.

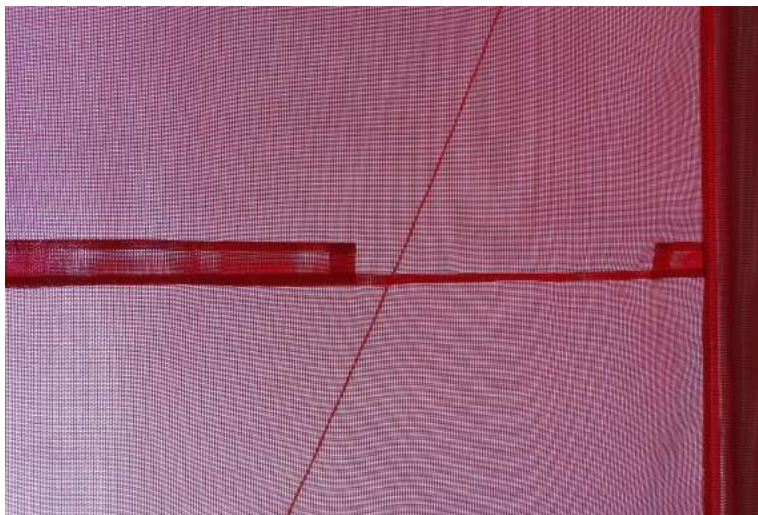
Begin with designated lane closest to Vacuum Producer.

Lay canopy open flat on the ground at the designated lane so that the front of canopy is at the front of the arch/truss.



(FIGURE #1)

The open SUPPORT RIB SEAM indicates the front underside of canopy.



(FIGURE #2)

V. ASSEMBLY/DISASSEMBLY

The following is the recommended method to achieve a safe and functional installation. Begin with designated lane closest to Vacuum Producer.

PRE-INSTALLATION

1. Feed REAR SUPPORT ROD into open seam on left side of rear canopy.
2. Feed REAR SUPPORT ROD EXTENSION into open seam on right side of rear canopy and assemble. (REAR SUPPORT ROD has "L" bracket as shown in FIGURE #3)



(FIGURE #3)

3. Feed FRONT SUPPORT ROD into open seam on left side of front canopy.
4. Feed FRONT SUPPORT EXTENSION ROD into open seam on right side of front canopy and assemble.



(FIGURE #4)

5. Hang REAR SUPPORT ROD ASSEMBLY onto arch brackets and fasten loose with hardware.



(FIGURE #5)



(FIGURE #6)

6. Hang FRONT SUPPORT ROD ASSEMBLY and WIRE ROPE onto arch brackets and fasten loose with hardware as shown in FIGURE #7.
 - a. Place WIRE ROPE looped end in between FRONT SUPPORT ROD ASSEMBLY and arch bracket then fasten loose with hardware.



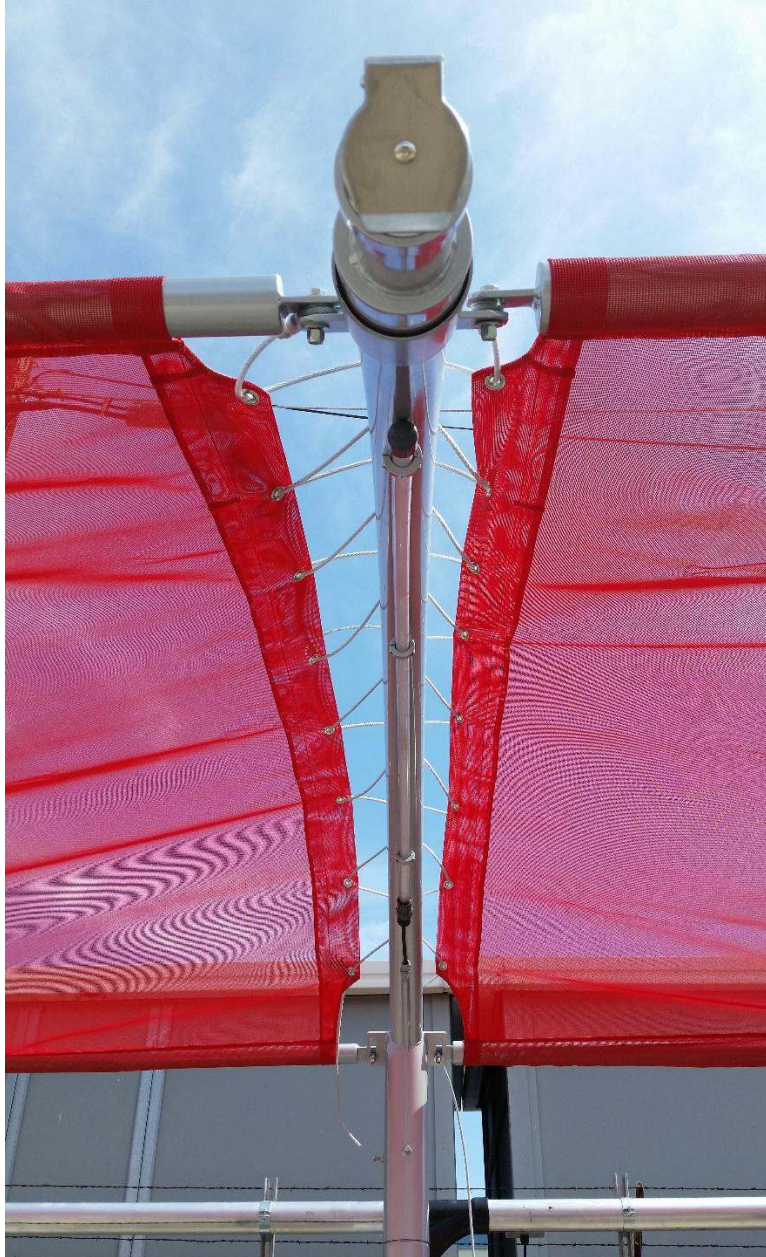
(FIGURE #7)

- b. Repeat previous step on opposite side.



(FIGURE #8)

7. Lace WIRE ROPE thru underside of first eyelet on canopy then around airline bracket on arch and back thru underside of next eyelet. Continue thru one entire side at a time while tightening rope as you progress thru to rear of arch assembly.



(FIGURE #9)

8. Feed WIRE ROPE thru REAR SUPPORT ROD ASSEMBLY and rear arch bracket as shown in FIGURE #10. Let excess WIRE ROPE hang for now.



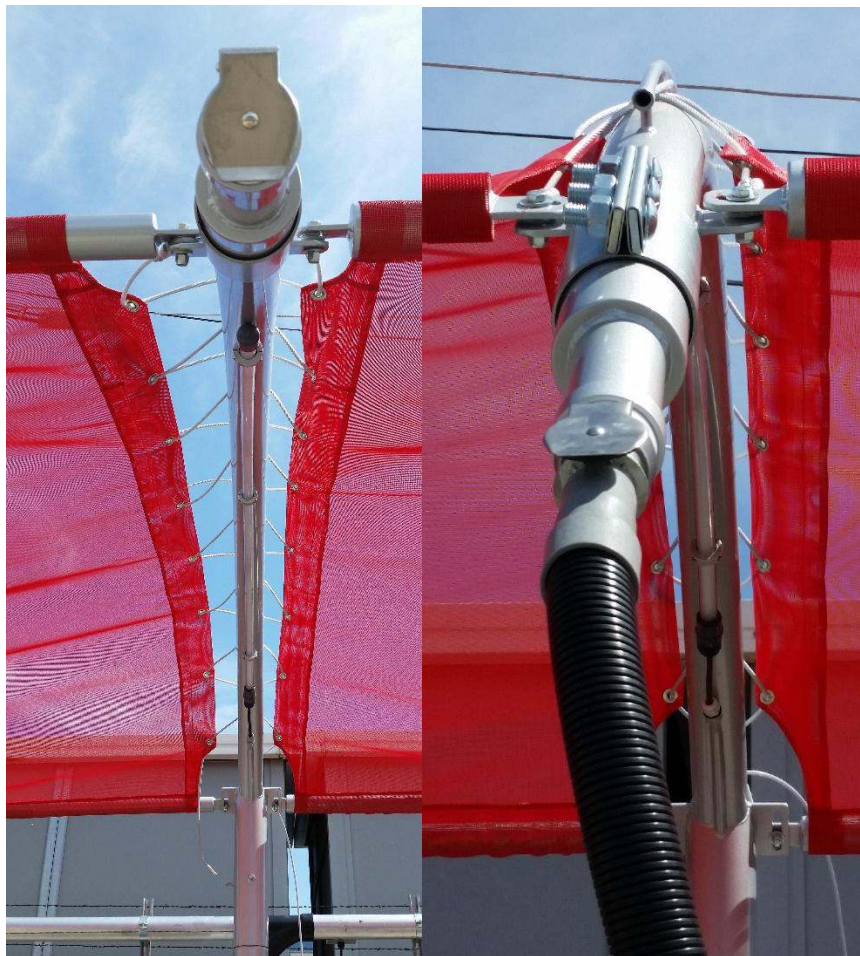
(FIGURE #10)

9. Continue steps #1 to #6 thru entire canopy line.

ASSEMBLY/DISASSEMBLY

To ensure the entire canopy system is installed correctly and straight the Pre-Installation instructions must take place prior to Final Assembly.

1. Begin with designated lane closest to Vacuum Producer
2. Adjust canopy so that it is centered on FRONT and REAR SUPPORT ROD ASSEMBLIES.
3. Tighten WIRE ROPE beginning at the front of the arch so that a gap of 2"-3" is achieved as you work your way towards the rear of the arch. Verify crimp on looped end of WIRE ROPE is in direction of first eyelet. (see FIGURE #11)



(FIGURE #11)

- Once at the rear of the arch, while applying tension on the tightened WIRE ROPE, loop WIRE ROPE back to itself to apply U-BOLT for fastening. Keep tension on WIRE ROPE as you tighten hardware on U-BOLT.



(FIGURE #12)

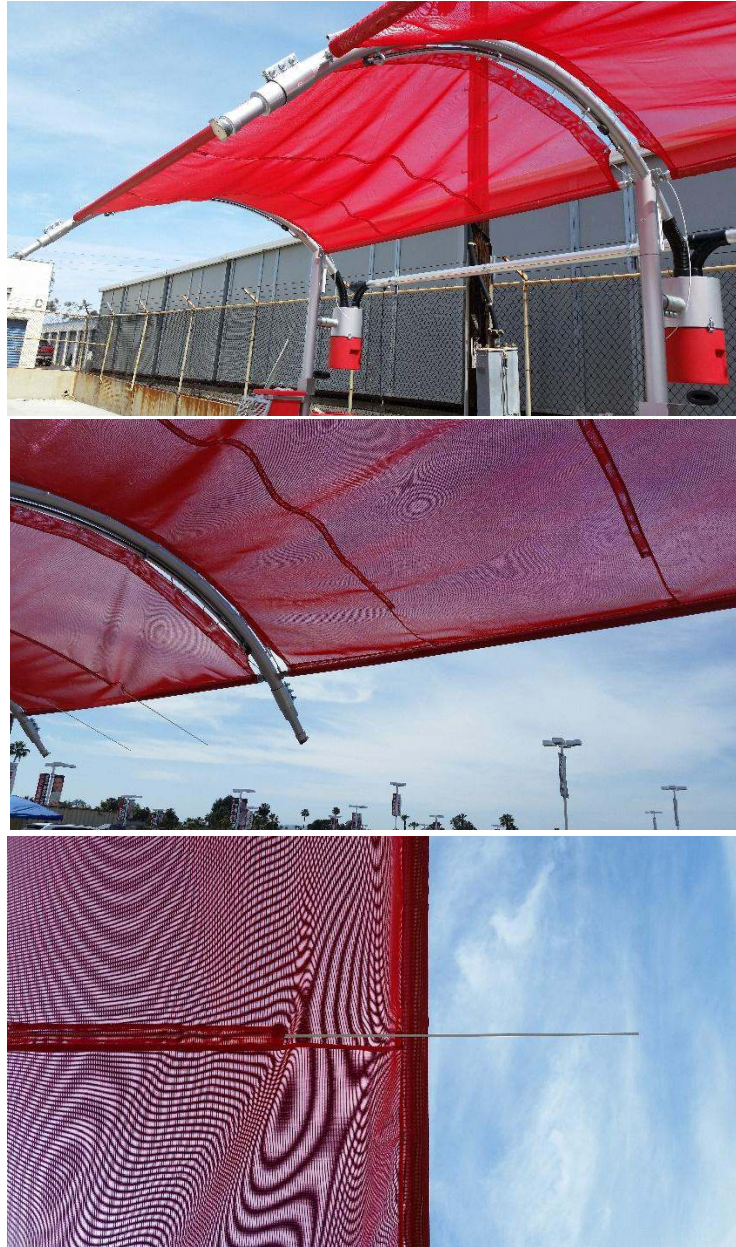
- Cut excess WIRE ROPE so that approximately 3" is left.

6. Finally, tighten down all hardware on that WIRE ROPE run.
7. Continue steps #1-#6 thru entire canopy line working your way from the arch closest to the Vacuum Producer to the farthest arch.



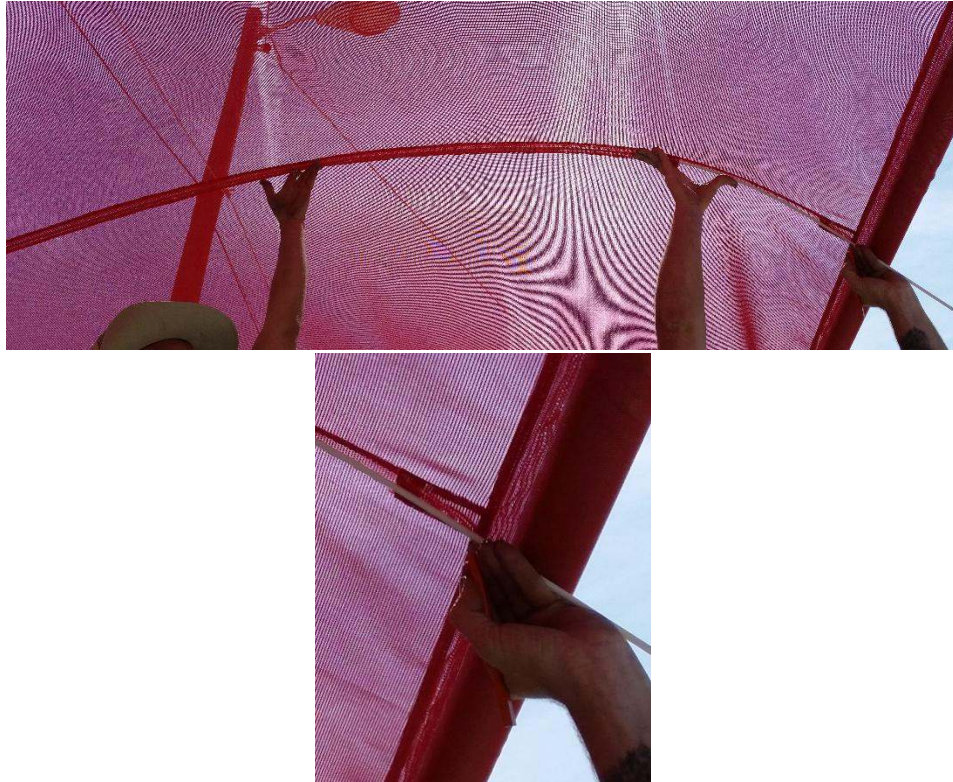
(FIGURE #13)

8. Install (2X) FIBER RODS into center seams of canopy.



(FIGURE #14)

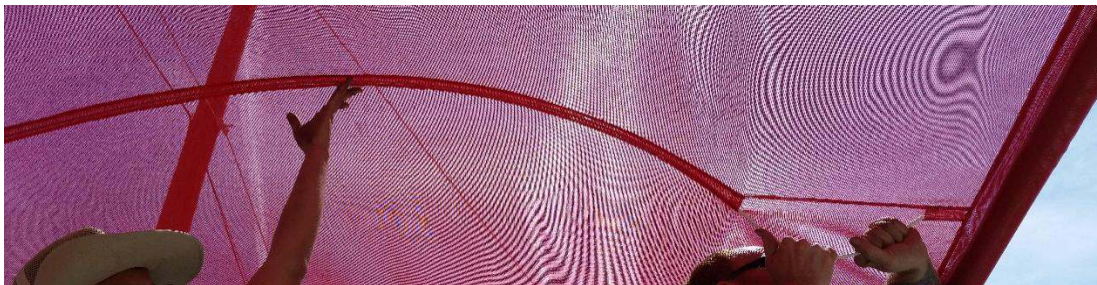
9. Apply tension on rod at the highest peak and mark cut line on rod to inside pocket of open seam.



(FIGURE #15)

10. Cut rod

11. Apply tension on rod at highest peak while flexing rod in opposite direction to install rod into pocket of open seam. Be cautious not to over flex FIBER ROD from cracking and/or breaking.



(FIGURE #16)

12. Repeat steps #8 - #11 thru entire canopy line.