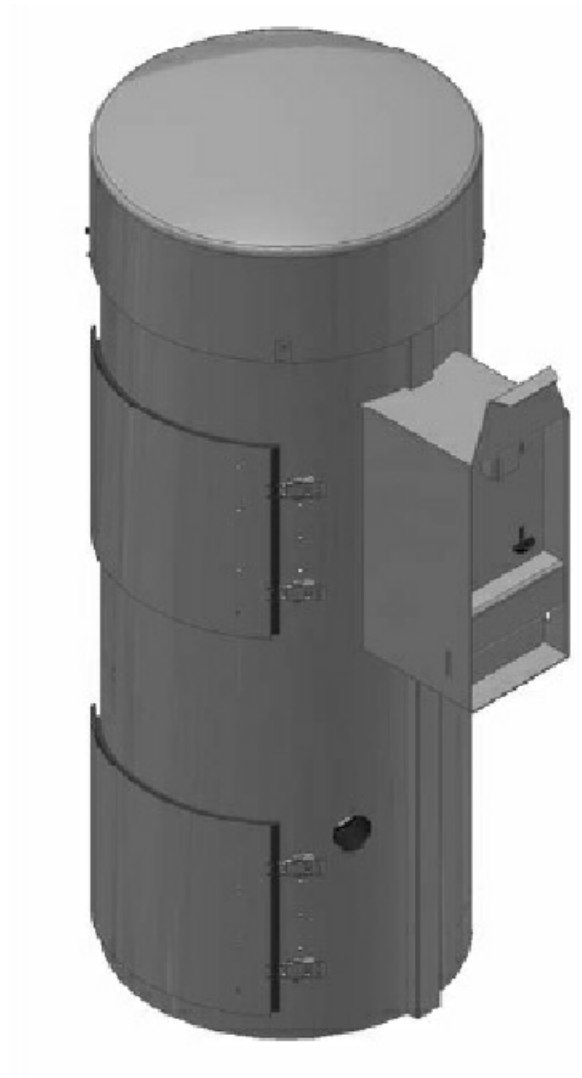


***SELF-SERVE SERIES VACS***  
***OWNERS MANUAL***



***SELF SERVE SERIES***  
***OWNERS MANUAL***



**Rev. A**

**SCALE: N/A**

**SHEET NO: 1**

# TABLE OF CONTENTS

- **Product Information** ..... 3
- **Specifications** ..... 4
- **Installation**
  - Requirements ..... 5
  - Vac Installation ..... 6
  - Footprint and Dimensions ..... 7
- **Timer setup**
  - SSAC Setup ..... 8
  - Timer Settings Chart ..... 9
- **Maintenance** ..... 10
- **Parts Breakdown** ..... 11

**SELF SERVE SERIES**  
**OWNERS MANUAL**



Rev. A

SCALE: N/A

SHEET NO: 2

# **PRODUCT INFORMATION**

Please take a moment to fill out the information below in order to aid us with any future sales or service inquiries. Model number and serial number information can be found on the serial tag located inside the control box and/or on the lower exterior of the can. Key number can be found on the tag that comes attached to the keys. There may be more than one key number depending on unit.

Please keep this information with your records

**MODEL #:** \_\_\_\_\_

**SERIAL #:** \_\_\_\_\_

**KEY NUMBER(S):** \_\_\_\_\_

**DATE PURCHASED:** \_\_\_\_\_

**DISTRIBUTOR:** \_\_\_\_\_

**AUTOVAC INDUSTRIAL  
VACUUM & AIR SYSTEMS  
9410 BOND AVENUE  
EL CAJON, CA 92021  
(888)-628-8682  
SALES@g2equipment.com**

***SELF SERVE SERIES  
OWNERS MANUAL***



**Rev. A**

**SCALE: N/A**

**SHEET NO: 3**

# SPECIFICATIONS

## 110V SPECIFICATIONS

- HEIGHT: 54-1/2"
- CANISTER DIAMETER: 19"
- DOME DIAMETER: SMALL: 20"  
LARGE: 24"  
PLASTIC: 24"
- TOTAL DEPTH: REAR OF DOME TO FRONT OF LOCK BOX: SMALL DOME: 27-1/8"  
LARGE DOME: 29"  
LIGHTED DOME: 29"
- WEIGHT: 135-155 LBS
- VACUUM: 2 MOTOR UNITS:
  - 110/220 VAC, 50/60HZ
  - 20 AMP DEDICATED SERVICE REQD.
  - 4 BAG ACCESS FROM DOOR3 MOTOR UNITS:
  - 110/220 VAC, 50/60HZ
  - 30 AMP DEDICATED SERVICE REQD.
  - 4 BAG ACCESS FROM DOOR
- MOTORS: AMETEK UNIVERSAL TYPE, 50/60HZ  
17,500 - 22,500 RPM  
2 STAGE PERIPHERAL BYPASS DISCHARGE  
UL RECOGNIZED CATEGORY  
PRGY2(E47185)  
CSA CERTIFIED, CLASS 1611 01(LR31393)

## 220V SPECIFICATIONS

- HEIGHT: 54-1/2"
- CANISTER DIAMETER: 19"
- DOME DIAMETER: SMALL: 20"  
LARGE: 24"  
PLASTIC: 24"
- TOTAL DEPTH: REAR OF DOME TO FRONT OF LOCK BOX: SMALL DOME: 27-1/8"  
LARGE DOME: 29"  
LIGHTED DOME: 29"
- WEIGHT: 135-155 LBS
- VACUUM: 2 MOTOR UNITS:
  - 220 VAC, 50/60HZ
  - 10 AMP DEDICATED SERVICE REQD.
  - 4 BAG ACCESS FROM DOOR3 MOTOR UNITS:
  - 110/220 VAC, 50/60HZ
  - 15 AMP DEDICATED SERVICE REQD.
  - 4 BAG ACCESS FROM DOOR
- MOTORS: AMETEK UNIVERSAL TYPE, 50/60HZ  
17,500 - 22,500 RPM  
2 STAGE PERIPHERAL BYPASS DISCHARGE  
UL RECOGNIZED CATEGORY  
PRGY2(E47185)  
CSA CERTIFIED, CLASS 1611 01(LR31393)

**SELF SERVE SERIES  
OWNERS MANUAL**



Rev. A

SCALE: N/A

SHEET NO: 4

# INSTALLATION REQUIREMENTS

## !IMPORTANT!

TO ENSURE PROPER FUNCTIONALITY AND ADHERANCE TO BOTH LOCAL AND NATIONAL ELECTRIC CODES, IT IS RECOMMENDED THAT SERVICE BE INSTALLED BY A LICENCED ELECTRICIAN EXPERIENCED IN COMMERCIAL APPLICATIONS. INADEQUATE POWER AND WIRING MAY CAUSE THE UNIT PERFORM ERRATICALLY, BLOW FUSES AND TIME INCORRECTLY.

### GENERAL MECHANICAL:

- ALL DIMENSIONS IN DRAWINGS ARE IN INCHES.
- MOUNTING STUD SIZE 3/8 X 16 UNC X 1"
- 4" MINIMUM CONCRETE REQUIRED AROUND MOUNTING STUD.
- 18" MINIMUM PAD RECOMMENDED FOR BUMPER CLEARANCE.

### FOR GASOLINE DISPENSING LOCATIONS:

- A MINIMUM 18" HIGH PAD ABOVE THE DRIVEWAY.
- 20 FOOT HORIZONTAL CLEARANCE FROM THE EXTERIOR ENCLOSURE OF ANY GASOLINE DISPENSING PUMP.

### ELECTRICAL SERVICE:

- 2 MOTOR VACS
  - 120V VACS  
20 AMP DEDICATED SERVICE REQUIRED. 12 AWG MINIMUM WIRE SIZE REQUIRED (50FT RUN OR LESS). WIRE SIZE WILL VARY WITH DISTANCE FROM THE SERVICE PANEL TO THE UNIT.
  - 220V VACS  
10 AMP DEDICATED SERVICE REQUIRED. 14 AWG MINIMUM WIRE SIZE REQUIRED (50FT RUN OR LESS). WIRE SIZE WILL VARY WITH DISTANCE FROM THE SERVICE PANEL TO THE UNIT.
- 3 MOTOR VACS
  - 120V VACS  
30 AMP DEDICATED SERVICE REQUIRED. 10 AWG MINIMUM WIRE SIZE REQUIRED (50FT RUN OR LESS). WIRE SIZE WILL VARY WITH DISTANCE FROM THE SERVICE PANEL TO THE UNIT.
  - 220V VACS  
15 AMP DEDICATED SERVICE REQUIRED. 14 AWG MINIMUM WIRE SIZE REQUIRED (50FT RUN OR LESS). WIRE SIZE WILL VARY WITH DISTANCE FROM THE SERVICE PANEL TO THE UNIT.

***SELF SERVE SERIES***  
***OWNERS MANUAL***



# VAC INSTALLATION

**IT IS HIGHLY RECOMMENDED THAT THIS UNIT BE INSTALLED BY A LICENSED ELECTRICIAN to ensure all local and national electrical codes are adhered to.**

1. Using the dimensions shown in Figure 2 (page 7), install the mounting studs.
2. Mount the unit securely and install electrical service as shown in Figure 1.
3. Set timer to desired time and coin settings (pages 8 & 9).
4. Remove vac hose from cleanout area and install into hose insert cutout. Hose will thread into the cutout in a reverse-threading motion (counter-clockwise).
5. Apply power to the unit and verify proper operation.

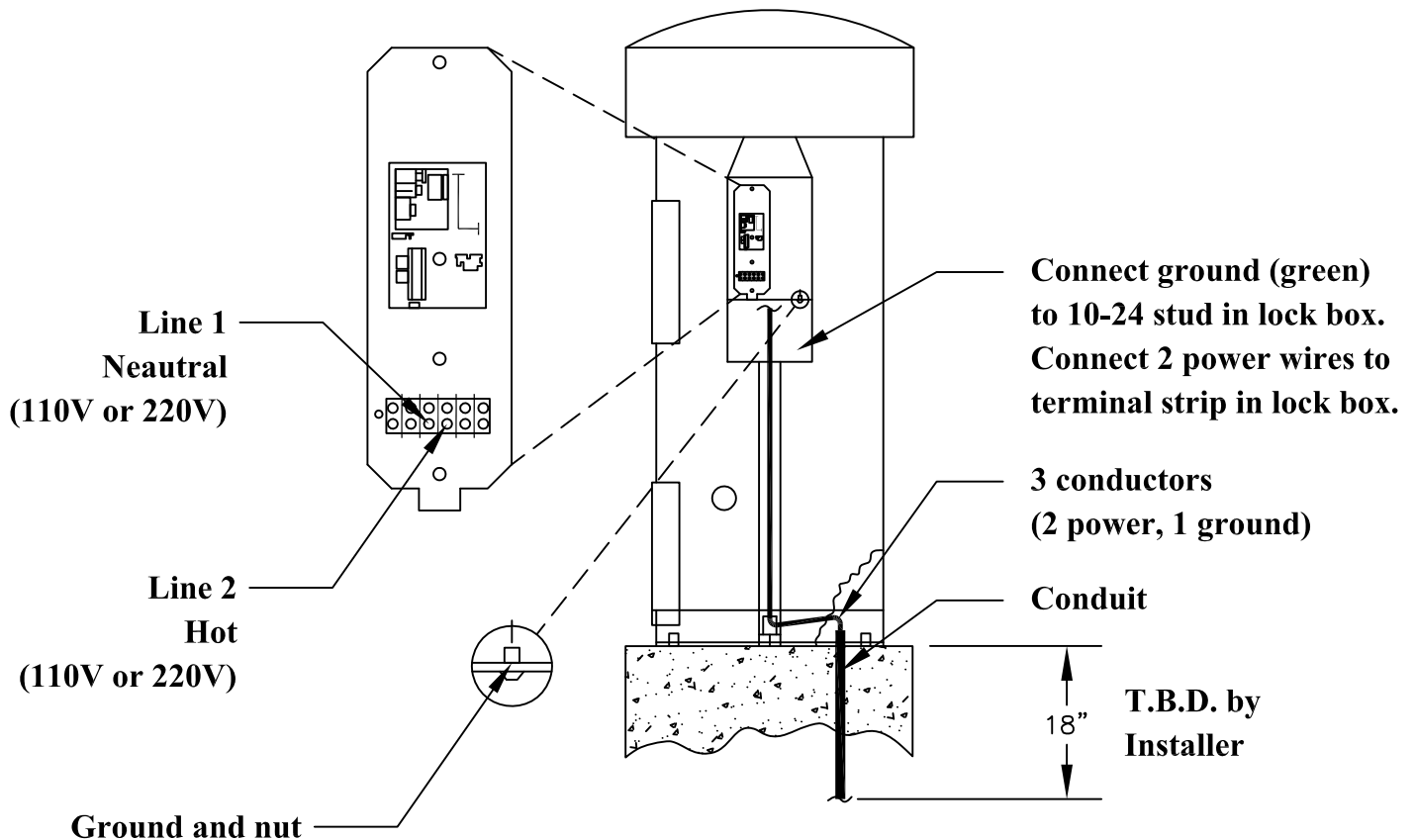


Figure 1: Back view Standard vac installation

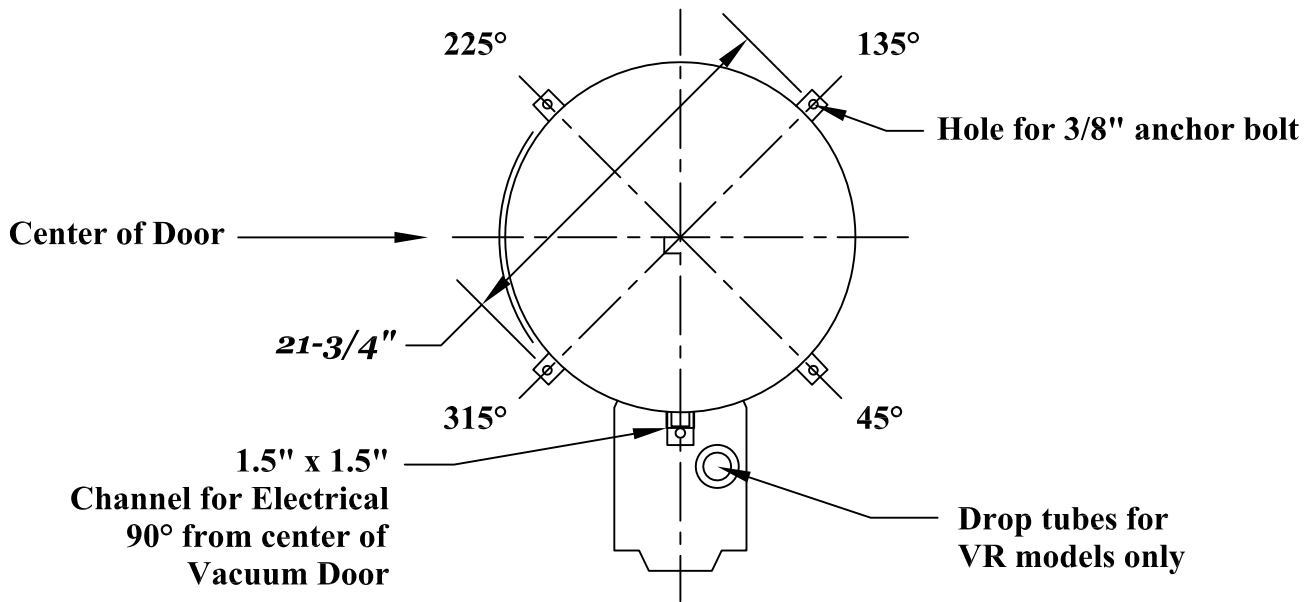
**SELF SERVE SERIES  
OWNERS MANUAL**

**AUTOVAC**  
Industrial  
Vacuum & Air Systems

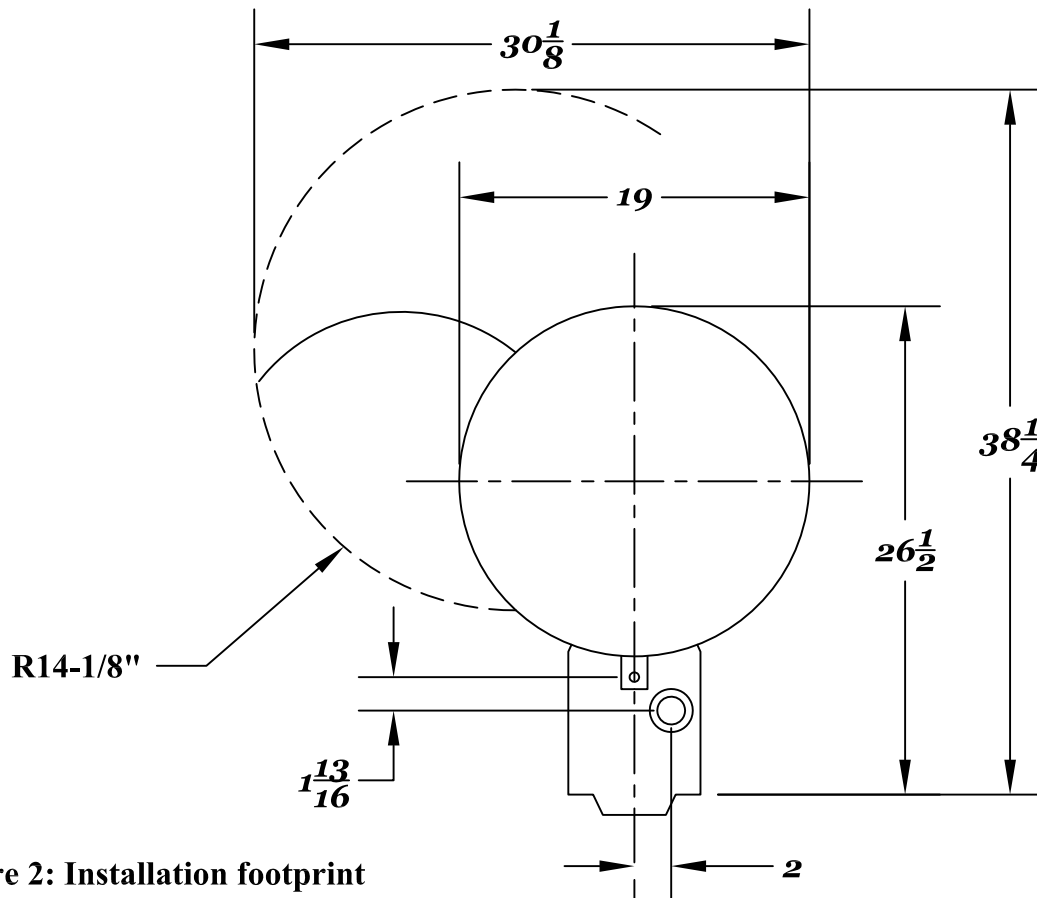
Rev. A

SCALE: N/A

SHEET NO: 6



**INTERNAL BOLT LOCATIONS**



**Figure 2: Installation footprint  
and vac dimensions**

**OVERALL DIMENSIONS**

***SELF SERVE SERIES***  
***OWNERS MANUAL***



# TIMER SETUP - SSAC TIMERS

Note: "AE" and "AN" model SSAC timers are accumulating timers. During use, timing can be extended proportionately by adding more coins.

The SSAC timer has two adjustable settings: Time per coin (in minutes) and number of coins to start.

### Time per coin:

Time per coin is the amount of time the unit will run per coin inserted and can be set from 0.1 minutes (6 seconds) to 12.7 minutes (12 minutes and 42 seconds) in increments of 6 seconds by turning on the correct switches until their values equal the desired time. For custom settings, follow the steps below:

1. Figure the total time your vac will run (in minutes) and divide that number by the number of coins to start. This is your time per coin. Round up or down to the nearest tenth of a minute.
2. Subtract the largest value switch (initially 6.4) from your time per coin.
  - a. If the resulting number is zero, move the switch to the "on" position and set all remaining un-set switches in the "off" position. Your timer is now set.
  - b. If the resulting number is positive, move the switch into the "on" position. Using the resulting number as your new time per coin, repeat step 2 with the next largest switch value.
  - c. If the resulting number is negative, set the switch in the "off" position and repeat step 2 using the next largest switch value.

### Coins to start:

Coins to start is the amount of coins needed to activate the timer and can be set from one to seven coins in increments of one coin.

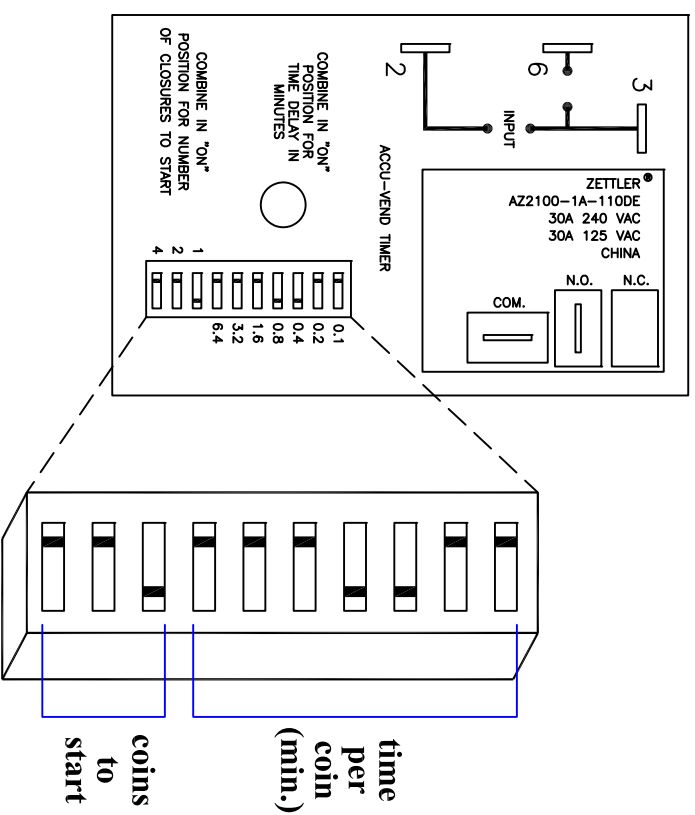


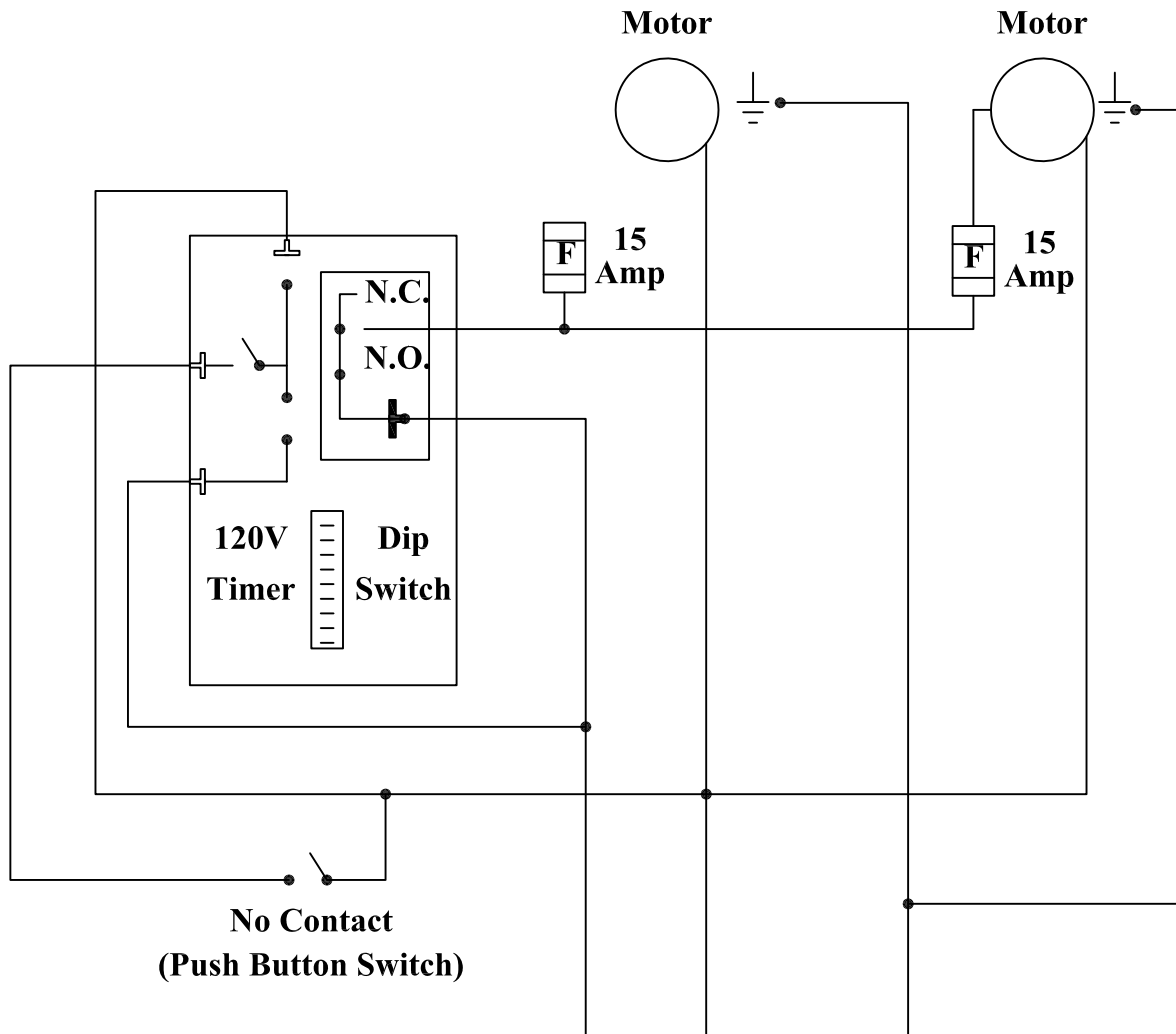
Figure 3: SSAC timer setup

Figure 3 shows an SSAC timer set for 1 coin to start and 3.8 minutes per coin for a total run time of 3.8 minutes (3 minutes and 48 seconds).

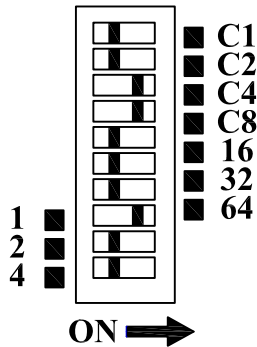
**SELF SERVE SERIES**  
**OWNERS MANUAL**







**Dip Switch Settings**



120 Volt  
60 Hz  
20 Amp  
Common  
Earth

Combine upper seven switches in "ON" position for vend time in minutes.

Combine lower three switches in "ON" position for number of closures to start.

Example Setting Range 3-1.2 minutes per coin - 1 coin to start.

**SELF SERVE SERIES OWNERS MANUAL**



# MAINTENANCE

- Shake the dirt from the filter bags weekly. If possible, machine wash bags monthly. Hang bags until dry. **DO NOT** machine dry bags.
- Remove dirt and debris from the canister as required.
- Check vac hose and nozzle periodically for signs of wear or damage and replace them as needed.
- Check door and motor gaskets periodically for signs of wear or damage and replace them as needed.
- Clean the outside portion of the canister with a stainless steel polish. **DO NOT** use any abrasive cleaners, steel wool or any kind of brush to clean the exterior. Doing so could possibly scratch or damage the finish of the canister.
- Mild soap and water may be used to clean the decals. **DO NOT** use any harsh or abrasive cleaners or the decal surface may be damaged.
- Dome lights on LD models should be replaced with 13 Watt compact fluorescent lights. **DO NOT** use a light rated greater than 13 watts. When replacing dome lights, turn off power to the unit before removing dome.

**SELF SERVE SERIES  
OWNERS MANUAL**

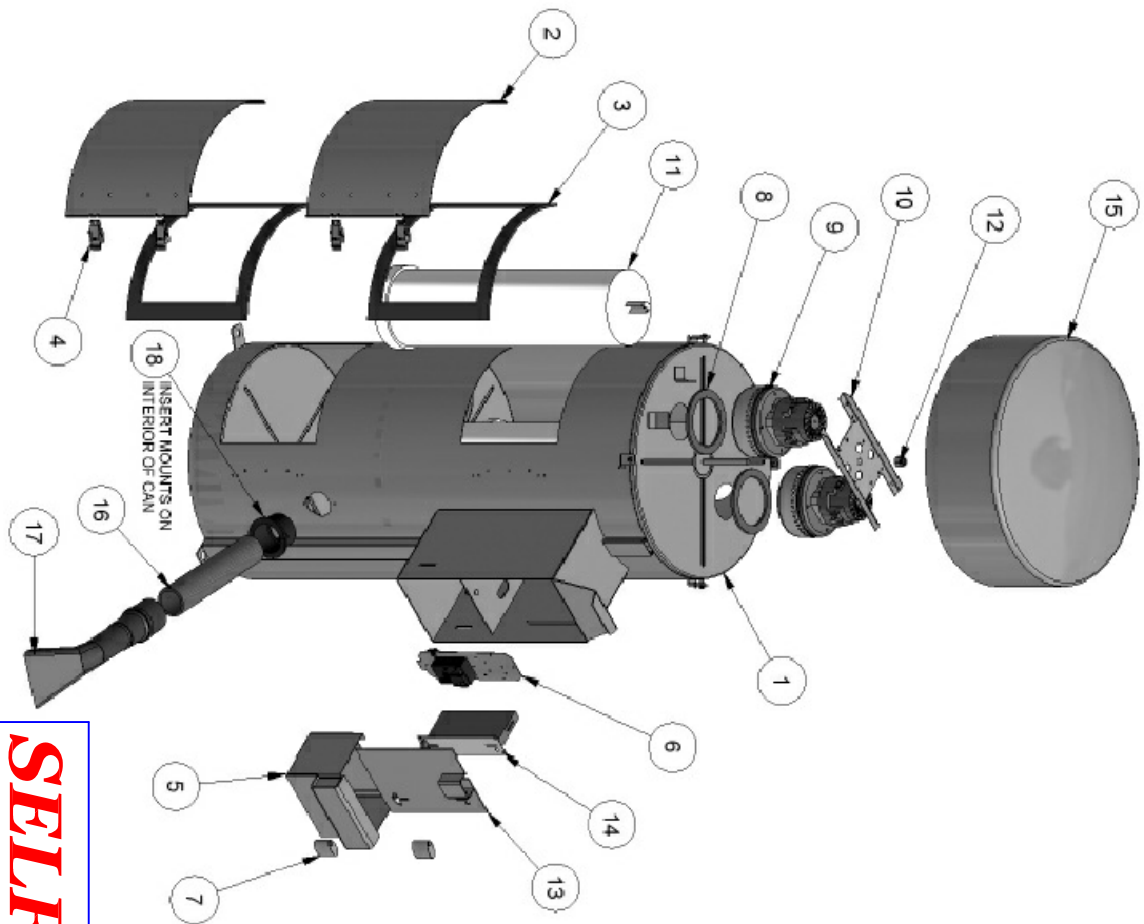


Rev. A

SCALE: N/A

SHEET NO: 10

EXPLODED VIEW: STANDARD 9200 CONFIGURATION



ITEM	DESCRIPTION	QTY
1	CAN W/C 2DR VAC ECONO/PIN	1
2	CLEANOUT DOOR WELDMENT	2
3	DOOR GASKET	2
4	LATCH, CLEANOUT DOOR	4
5	WELDMENT, COIN BOX	1
6	TIMER ASSY, 110 SSAC	1
7	PIN LOCK	2
8	MOTOR GASKET	2
9	MOTOR, AMETEK 115V	2
10	BRACKET, MOTOR MOUNT	1
11	FILTER BAG	4
12	1/2" Std NC Nylock Nut	1
13	FACEPLATE WELDMENT, R.H.	1
14	COIN ACCEPTOR	1
15	DOME ECONO-CLASS VAC-SMALL DOME	1
16	HOSE, 2" X 15' BLACK VACUUM	1
17	CLAW/CUFF ASSEMBLY, 2"	1
18	INLET TUBE	1

**SELLER SERVE SERIES  
OWNERS MANUAL**

