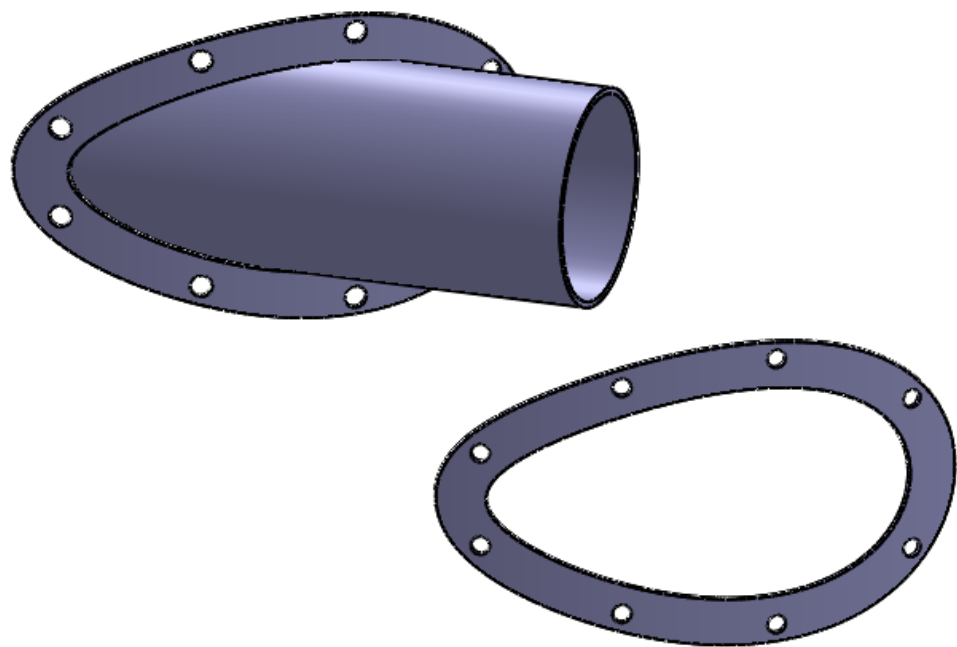
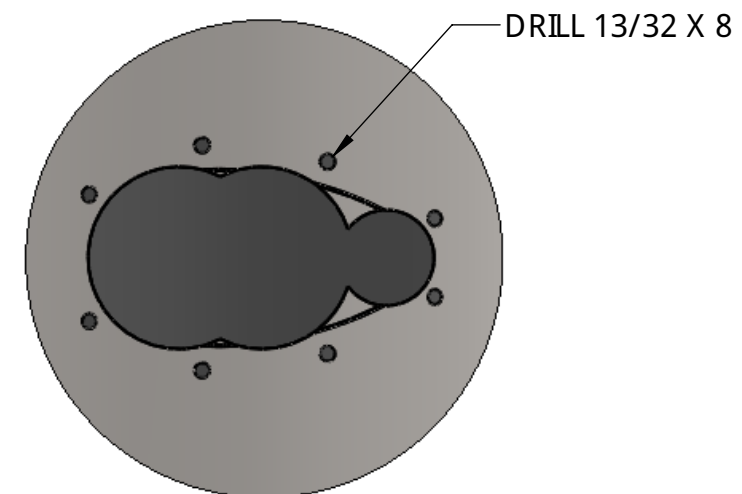


ADD-ON OUTLET PORT INSTALLATION INSTRUCTIONS

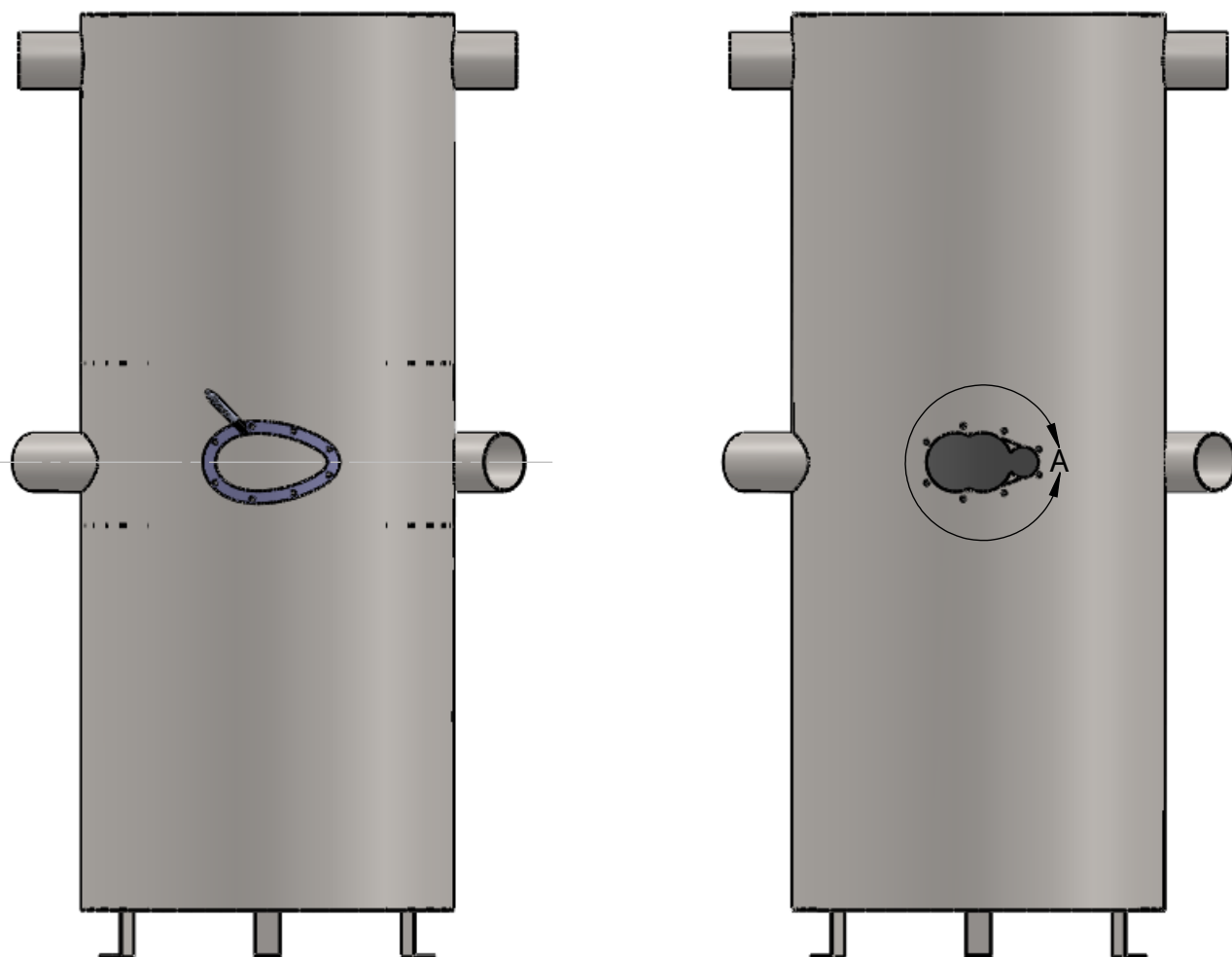


1. ON BACK SIDE OF FILTER/SEPARATOR, ALIGN THE PROVIDED RING AT THE SAME LEVEL AS THE OTHER INLET STUBS
2. MARK THE INNER EDGE OF THE RING AND THE 8 HOLES
3. CUT HOLES
 1. WITH A PLASMA CUTTER OR JIG SAW, CUT THE HOLE, USING THE SUGGESTED LAYOUT
OR
 2. WITH HOLE SAWS, CUT TWO 4.75" AND ONE 2" HOLE, USING THE SUGGESTED LAYOUT. FINISH THE HOLE WITH A HACK SAW OR JIG SAW.
4. CLEAN UP THE HOLE EDGES WITH A FILE
5. DRILL THE 8 BOLT HOLES WITH A 13/32" BIT (CLEARANCE HOLE FOR A 3/8-16 BOLT)

USE DRILL TEMPLATE FOR EXACT LOCATIONS



DETAIL A
SCALE 1:5



UNLESS OTHERWISE SPECIFIED:
DIMENSIONS ARE IN INCHES
TOLERANCES:
ANGULAR: $\pm 1^\circ$
ONE PLACE DECIMAL $\pm .1$
TWO PLACE DECIMAL $\pm .030$
THREE PLACE DECIMAL $\pm .010$

	NAME	DATE
Designer:	DLaFrenz	
Drafter:	DLaFrenz	
Checker:	S. Tucker	
Mfg. Approval:	S. Tucker	
Engineering:	B. Tucker	

PROPRIETARY AND CONFIDENTIAL
THE INFORMATION CONTAINED IN THIS DRAWING IS THE SOLE PROPERTY OF AUTOVAC INC. ANY REPRODUCTION IN PART OR AS A WHOLE WITHOUT THE WRITTEN PERMISSION OF AUTOVAC INC. IS PROHIBITED.

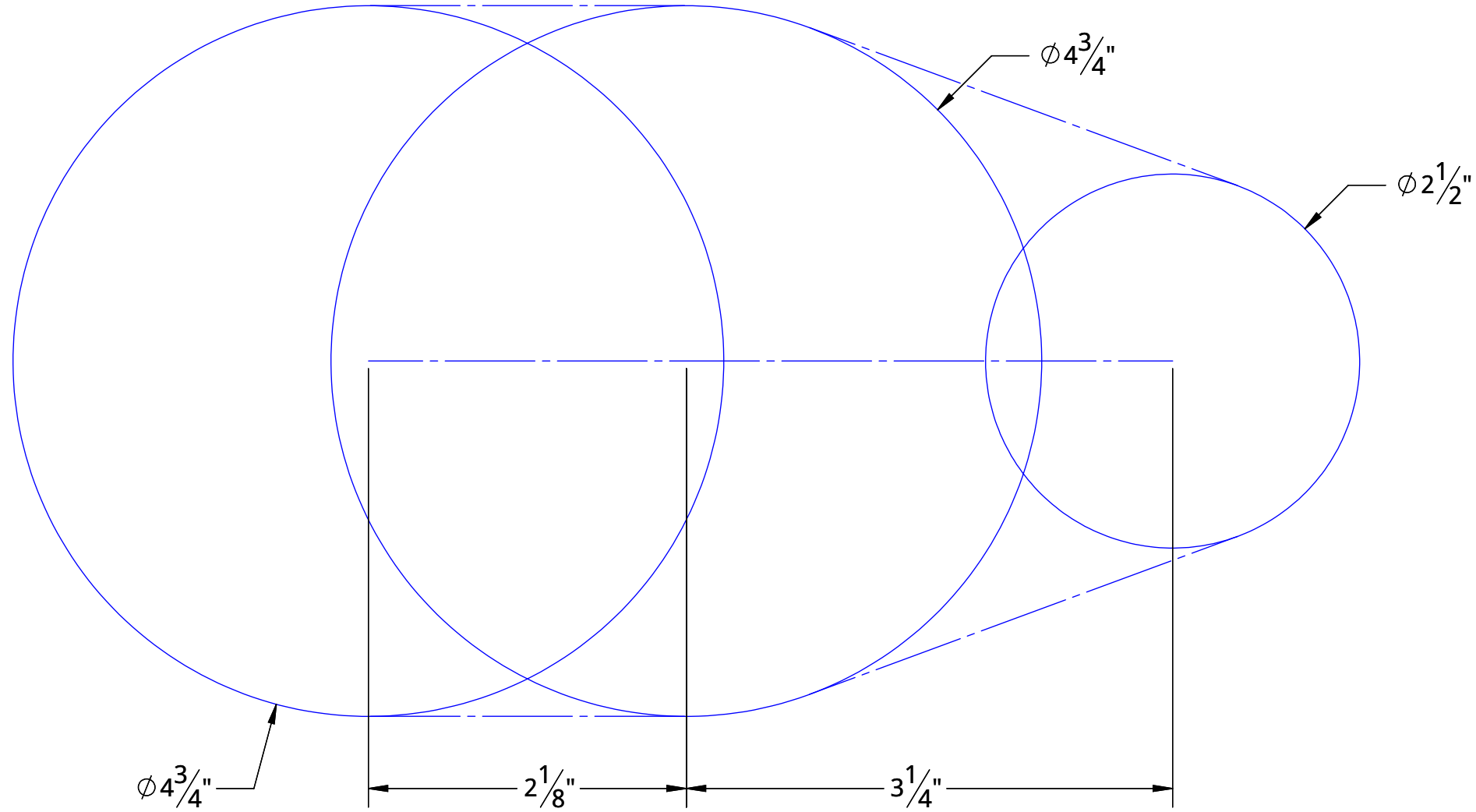
TITLE:
**ADD-ON INLET PORT
INSTALLATION
INSTRUCTIONS**

SIZE	PART #:	REV
B	C 010-0006	A

FILE NAME:
C 010-0006 REV A - ADDON INLET STUB INSTALLATION

DO NOT SCALE	SHEET 1 OF 4
--------------	--------------

DRILL TEMPLATE - 400 SERIES



UNLESS OTHERWISE SPECIFIED:
 DIMENSIONS ARE IN INCHES
 TOLERANCES:
 ANGULAR: $\pm 1^\circ$
 ONE PLACE DECIMAL $\pm .1$
 TWO PLACE DECIMAL $\pm .030$
 THREE PLACE DECIMAL $\pm .010$

	NAME	DATE
Designer:	DLaFrenz	
Drafter:	DLaFrenz	
Checker:	S. Tucker	
Mfg. Approval:	S. Tucker	
Engineering:	B. Tucker	

PROPRIETARY AND CONFIDENTIAL
 THE INFORMATION CONTAINED IN THIS DRAWING IS THE SOLE PROPERTY OF AUTOVAC INC. ANY REPRODUCTION IN PART OR AS A WHOLE WITHOUT THE WRITTEN PERMISSION OF AUTOVAC INC. IS PROHIBITED.

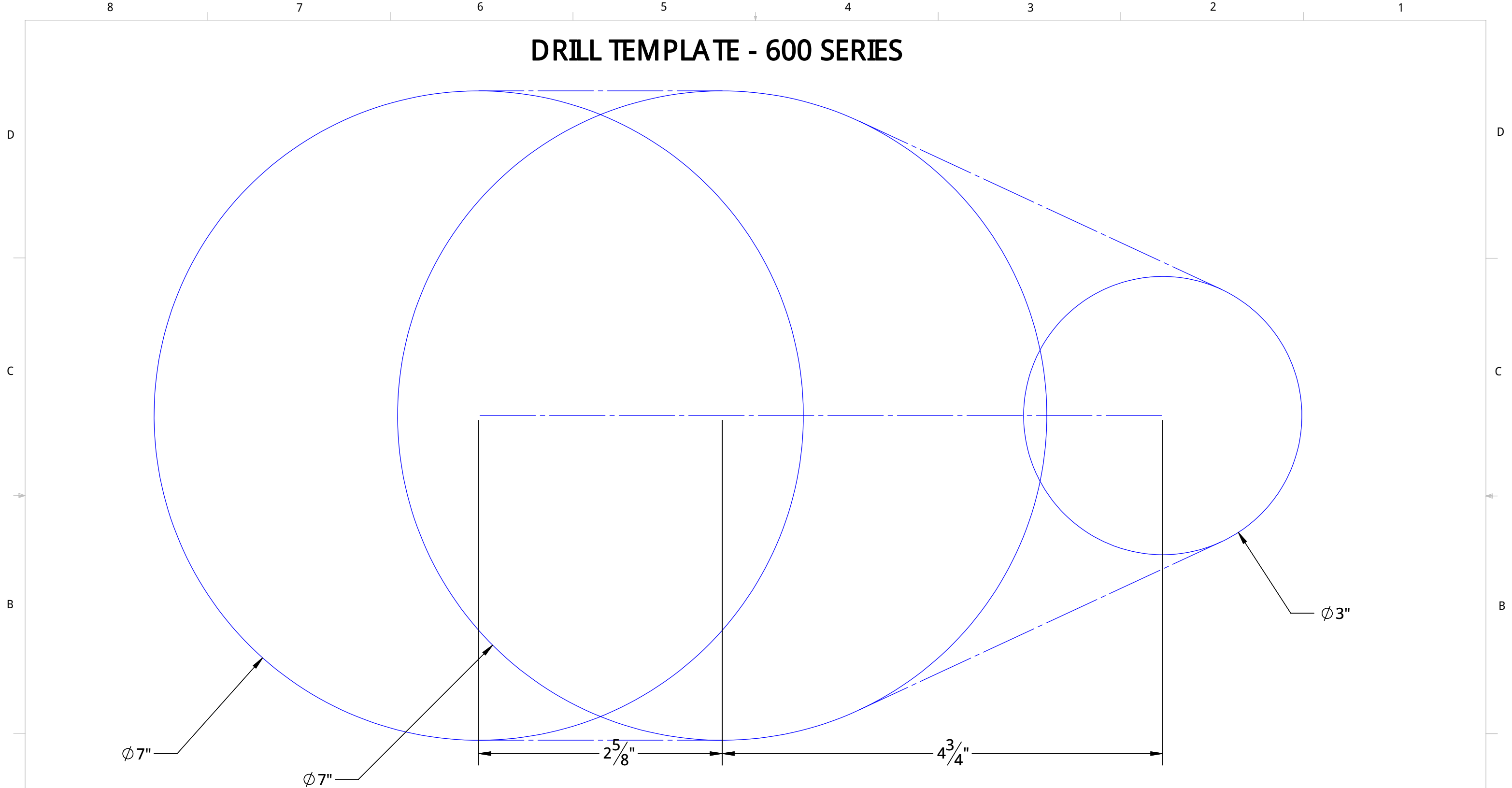
TITLE:		
ADD-ON INLET PORT INSTALLATION INSTRUCTIONS		

SIZE	PART #:	REV
B	C 010-0006	A

FILE NAME:
 C 010-0006 REV A - ADDON INLET STUB INSTALLATION

1:1	SHEET 2 OF 4
-----	--------------

DRILL TEMPLATE - 600 SERIES



Ø 7"

Ø 7"

2 ⁵/₈"

4 ³/₄"

Ø 3"



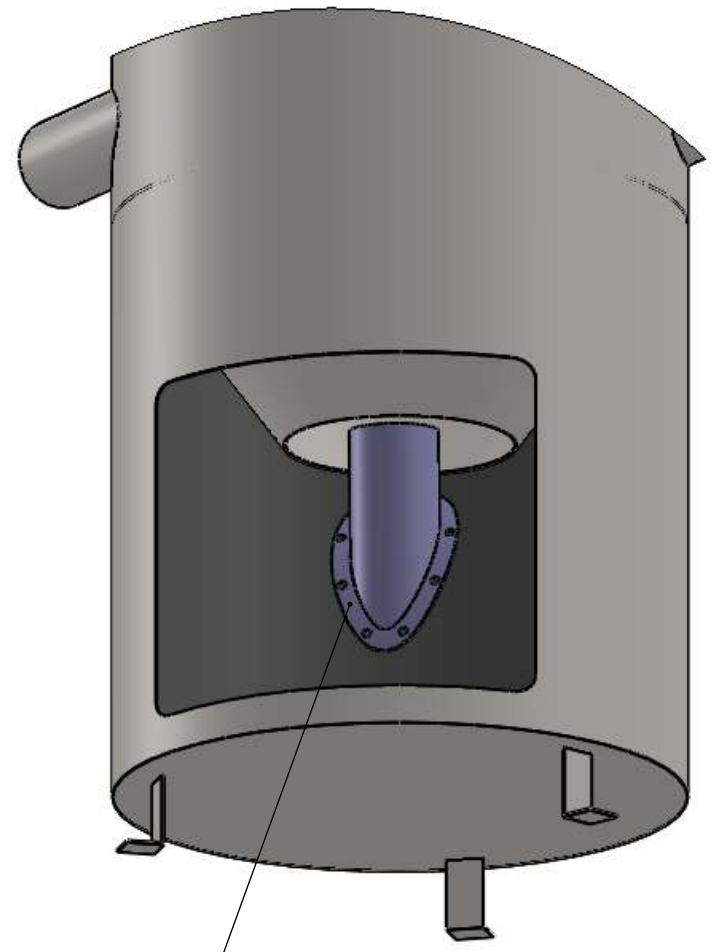
UNLESS OTHERWISE SPECIFIED:
 DIMENSIONS ARE IN INCHES
 TOLERANCES:
 ANGULAR: ± 1°
 ONE PLACE DECIMAL ± .1
 TWO PLACE DECIMAL ± .030
 THREE PLACE DECIMAL ± .010

	NAME	DATE
Designer:	DLaFrenz	
Drafter:	DLaFrenz	
Checker:	S. Tucker	
Mfg. Approval:	S. Tucker	
Engineering:	B. Tucker	

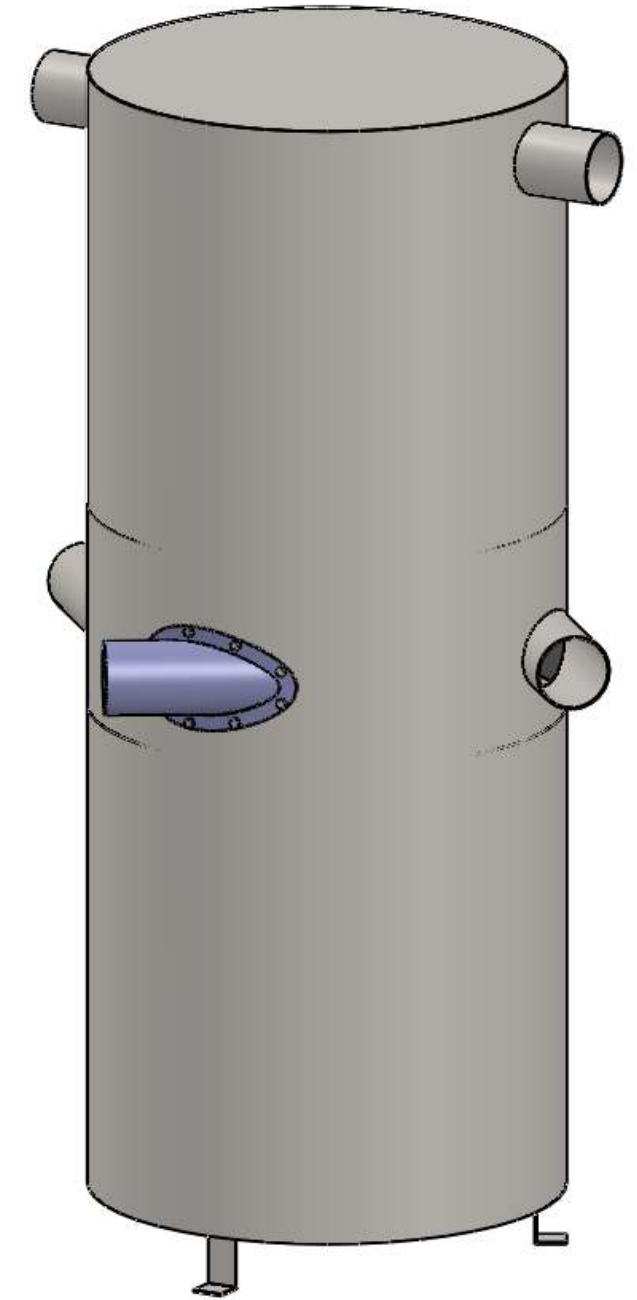
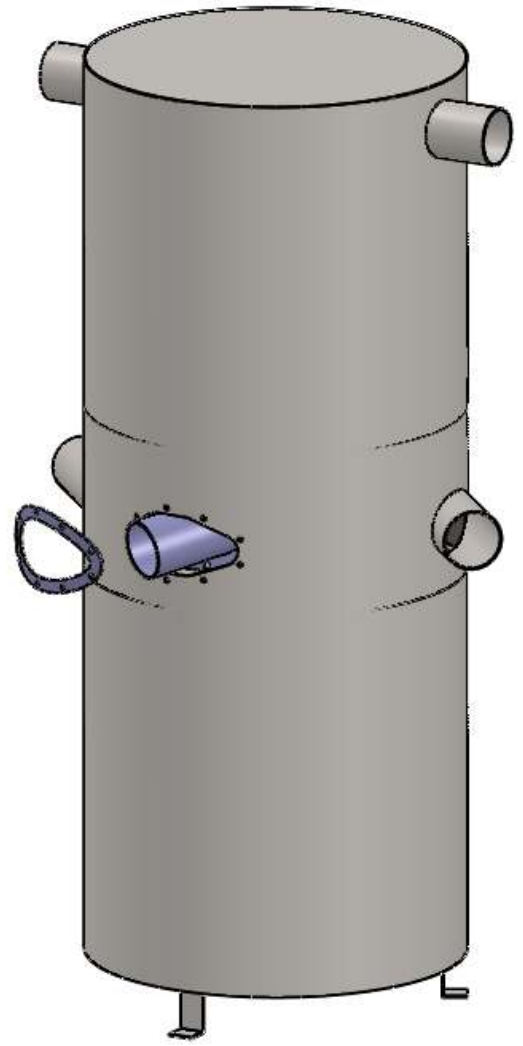
PROPRIETARY AND CONFIDENTIAL
 THE INFORMATION CONTAINED IN THIS DRAWING IS THE SOLE PROPERTY OF AUTOVAC INC. ANY REPRODUCTION IN PART OR AS A WHOLE WITHOUT THE WRITTEN PERMISSION OF AUTOVAC INC. IS PROHIBITED.

TITLE: ADD-ON INLET PORT INSTALLATION INSTRUCTIONS		
SIZE B	PART #: C 010-0006	REV A
FILE NAME: C 010-0006 REV A - ADDON INLET STUB INSTALLATION		
DO NOT SCALE		SHEET 3 OF 4

D
C
B
A



- ø APPLY A LARGE BEAD OF SILICON SEALANT ALL AROUND THIS FACE OF THE FLANGE
- ø REMOVE DIRT BUCKET AND FILTER BAGS, AS NECESSARY TO INSTALL THE NEW PORT
- ø INSTALLATION MAY REQUIRE TWO PEOPLE
- ø INSERT THE FITTING UP THROUGH THE LOWER DOOR AND THROUGH THE CUT HOLE
- ø PLACE RING OVER STUB AND SECURE WITH PROVIDED BOLTS



D
C
B
A



UNLESS OTHERWISE SPECIFIED:
 DIMENSIONS ARE IN INCHES
 TOLERANCES:
 ANGULAR: ± 1°
 ONE PLACE DECIMAL ±.1
 TWO PLACE DECIMAL ±.030
 THREE PLACE DECIMAL ±.010

	NAME	DATE
Designer:	DLaFrenz	
Drafter:	DLaFrenz	
Checker:	S. Tucker	
Mfg. Approval:	S. Tucker	
Engineering:	B. Tucker	

PROPRIETARY AND CONFIDENTIAL
 THE INFORMATION CONTAINED IN THIS DRAWING IS THE SOLE PROPERTY OF AUTOVAC INC. ANY REPRODUCTION IN PART OR AS A WHOLE WITHOUT THE WRITTEN PERMISSION OF AUTOVAC INC. IS PROHIBITED.

TITLE: ADD-ON INLET PORT INSTALLATION INSTRUCTIONS		
SIZE	PART #:	REV
B	C 010-0006	A

FILE NAME: C 010-0006 REV A - ADDON INLET STUB INSTALLATION	
DO NOT SCALE	SHEET 4 OF 4