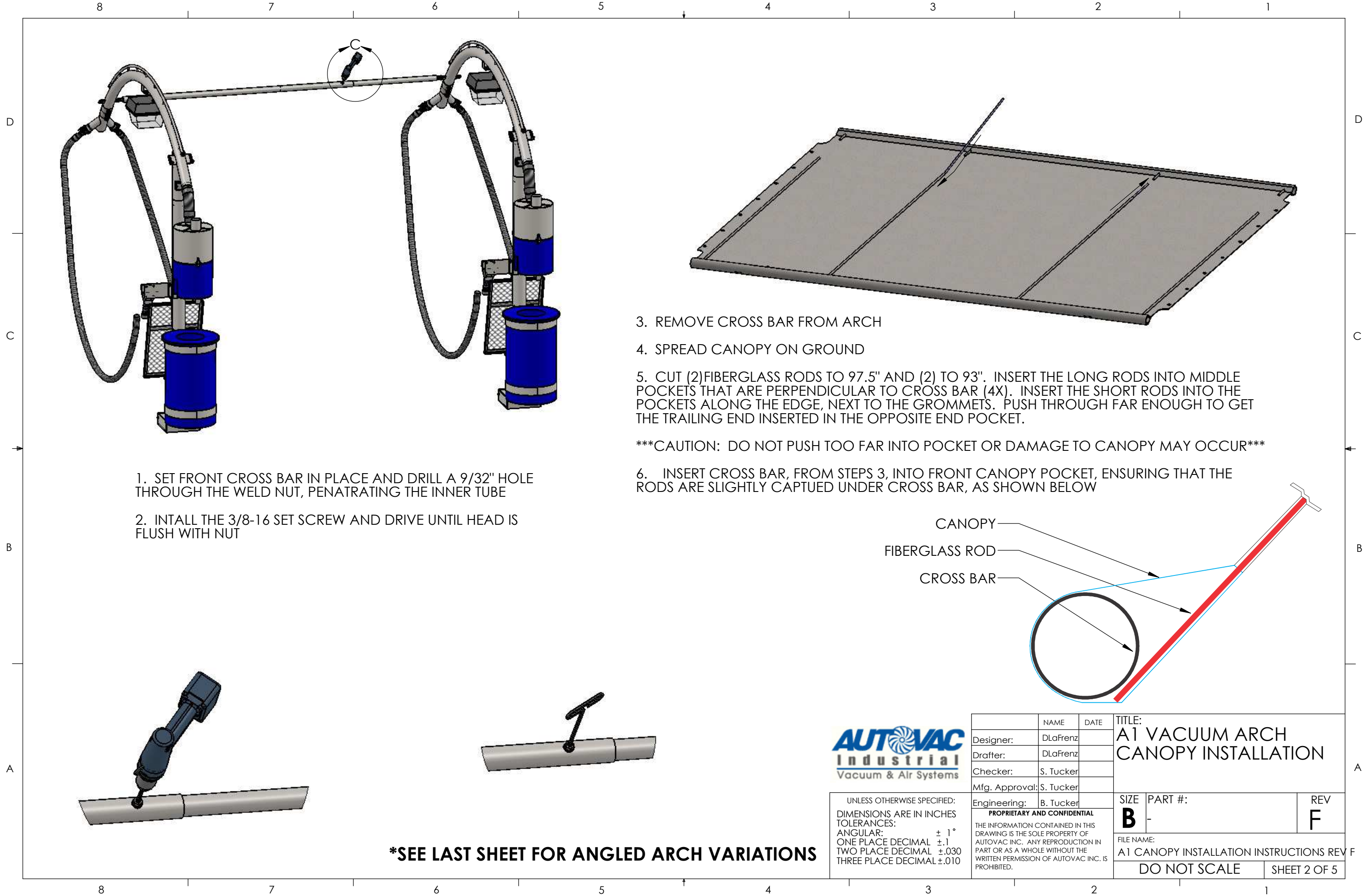


UNLESS OTHERWISE SPECIFIED:  
 DIMENSIONS ARE IN INCHES  
 TOLERANCES:  
 ANGULAR:  $\pm 1^\circ$   
 ONE PLACE DECIMAL  $\pm .1$   
 TWO PLACE DECIMAL  $\pm .030$   
 THREE PLACE DECIMAL  $\pm .010$

	NAME	DATE	TITLE: A1 VACUUM ARCH CANOPY INSTALLATION	
Designer:	DLaFrenz			
Drafter:	DLaFrenz			
Checker:	S. Tucker			
Mfg. Approval:	S. Tucker			
Engineering:	B. Tucker		SIZE <b>B</b>	PART #: -
PROPRIETARY AND CONFIDENTIAL THE INFORMATION CONTAINED IN THIS DRAWING IS THE SOLE PROPERTY OF AUTOVAC INC. ANY REPRODUCTION IN PART OR AS A WHOLE WITHOUT THE WRITTEN PERMISSION OF AUTOVAC INC. IS PROHIBITED.			REV <b>F</b>	FILE NAME: A1 CANOPY INSTALLATION INSTRUCTIONS REV F
			DO NOT SCALE	



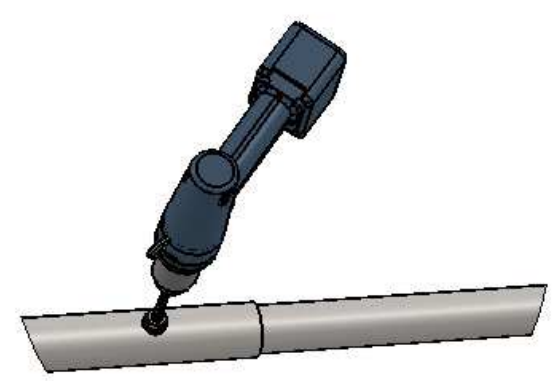
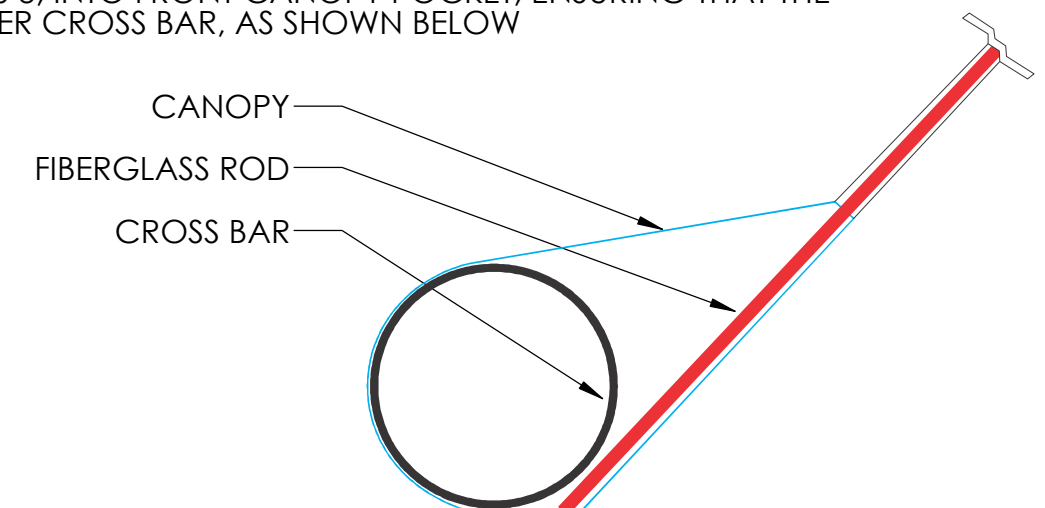
1. SET FRONT CROSS BAR IN PLACE AND DRILL A 9/32" HOLE THROUGH THE WELD NUT, PENETRATING THE INNER TUBE
2. INTALL THE 3/8-16 SET SCREW AND DRIVE UNTIL HEAD IS FLUSH WITH NUT

3. REMOVE CROSS BAR FROM ARCH
4. SPREAD CANOPY ON GROUND

5. CUT (2) FIBERGLASS RODS TO 97.5" AND (2) TO 93". INSERT THE LONG RODS INTO MIDDLE POCKETS THAT ARE PERPENDICULAR TO CROSS BAR (4X). INSERT THE SHORT RODS INTO THE POCKETS ALONG THE EDGE, NEXT TO THE GROMMETS. PUSH THROUGH FAR ENOUGH TO GET THE TRAILING END INSERTED IN THE OPPOSITE END POCKET.

\*\*\*CAUTION: DO NOT PUSH TOO FAR INTO POCKET OR DAMAGE TO CANOPY MAY OCCUR\*\*\*

6. INSERT CROSS BAR, FROM STEPS 3, INTO FRONT CANOPY POCKET, ENSURING THAT THE RODS ARE SLIGHTLY CAPTUED UNDER CROSS BAR, AS SHOWN BELOW



**\*SEE LAST SHEET FOR ANGLED ARCH VARIATIONS**

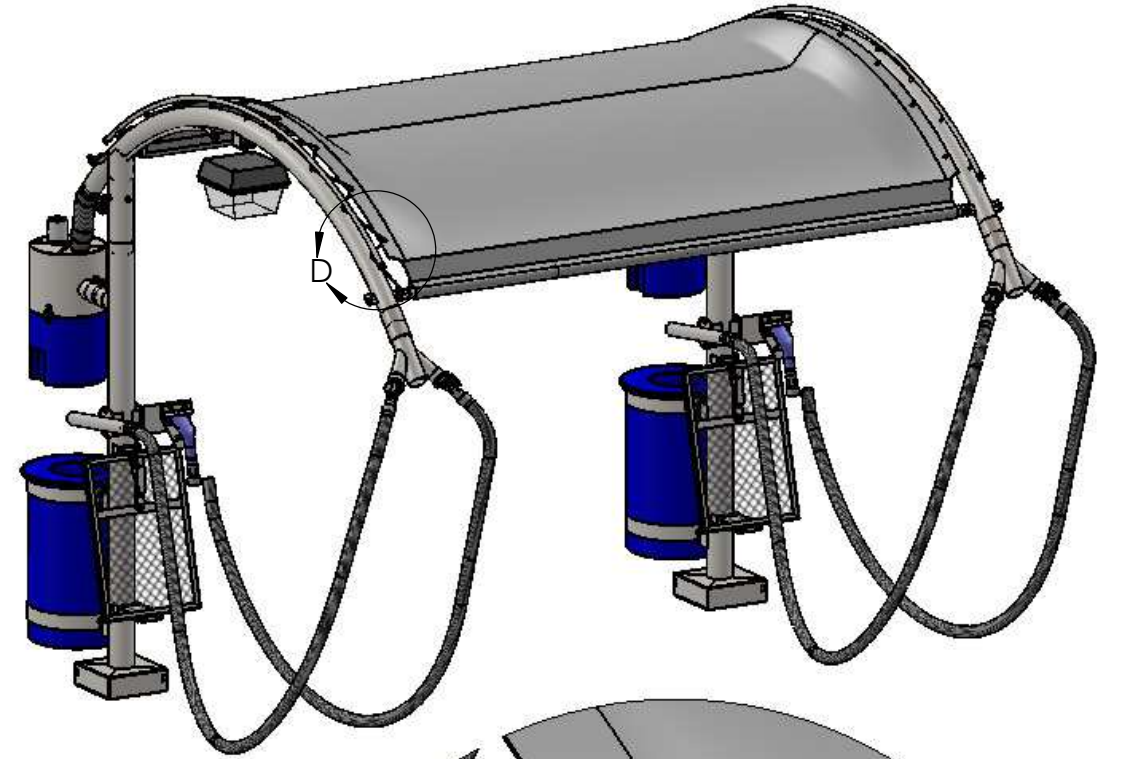
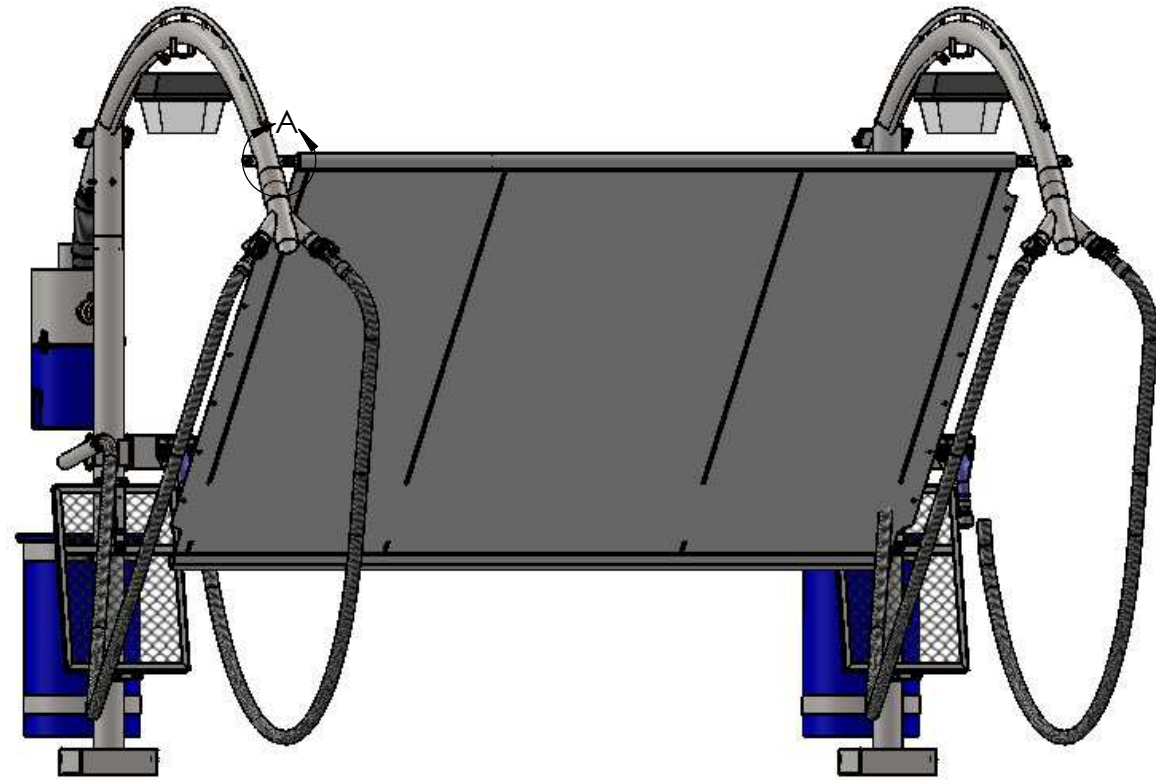


UNLESS OTHERWISE SPECIFIED:  
 DIMENSIONS ARE IN INCHES  
 TOLERANCES:  
 ANGULAR: ± 1°  
 ONE PLACE DECIMAL ±.1  
 TWO PLACE DECIMAL ±.030  
 THREE PLACE DECIMAL ±.010

Designer:	NAME	DATE	TITLE: <b>A1 VACUUM ARCH CANOPY INSTALLATION</b>	
Drafter:	DLaFrenz		SIZE	PART #:
Checker:	S. Tucker		<b>B</b>	-
Mfg. Approval:	S. Tucker		REV	<b>F</b>
Engineering:	B. Tucker		FILE NAME: A1 CANOPY INSTALLATION INSTRUCTIONS REV F	
<small>PROPRIETARY AND CONFIDENTIAL</small> <small>THE INFORMATION CONTAINED IN THIS DRAWING IS THE SOLE PROPERTY OF AUTOVAC INC. ANY REPRODUCTION IN PART OR AS A WHOLE WITHOUT THE WRITTEN PERMISSION OF AUTOVAC INC. IS PROHIBITED.</small>			DO NOT SCALE SHEET 2 OF 5	

D

D

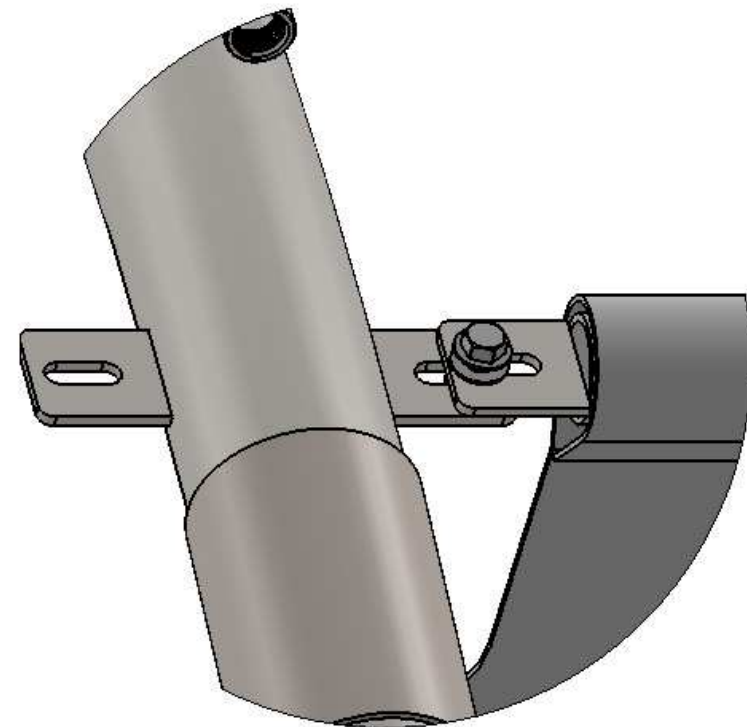


C

C

7. BOLT FRONT CROSS BAR IN PLACE, CAPTURING THE WIRE ROPE LOOP UNDER THE WASHER AND NUT.

8. WITH A TWO PERSON TEAM, BEGIN LACING THE WIRE ROPE AROUND THE AIRLINE SPINDLES AND THROUGH THE CANOPY GROMMETS, ENSURING EVEN GAPS BETWEEN THE CANOPY AND ARCHES.



B

B

A

A



	NAME	DATE
Designer:	DLaFrenz	
Drafter:	DLaFrenz	
Checker:	S. Tucker	
Mfg. Approval:	S. Tucker	
Engineering:	B. Tucker	

TITLE: A1 VACUUM ARCH CANOPY INSTALLATION		
SIZE	PART #:	REV
<b>B</b>	-	<b>F</b>

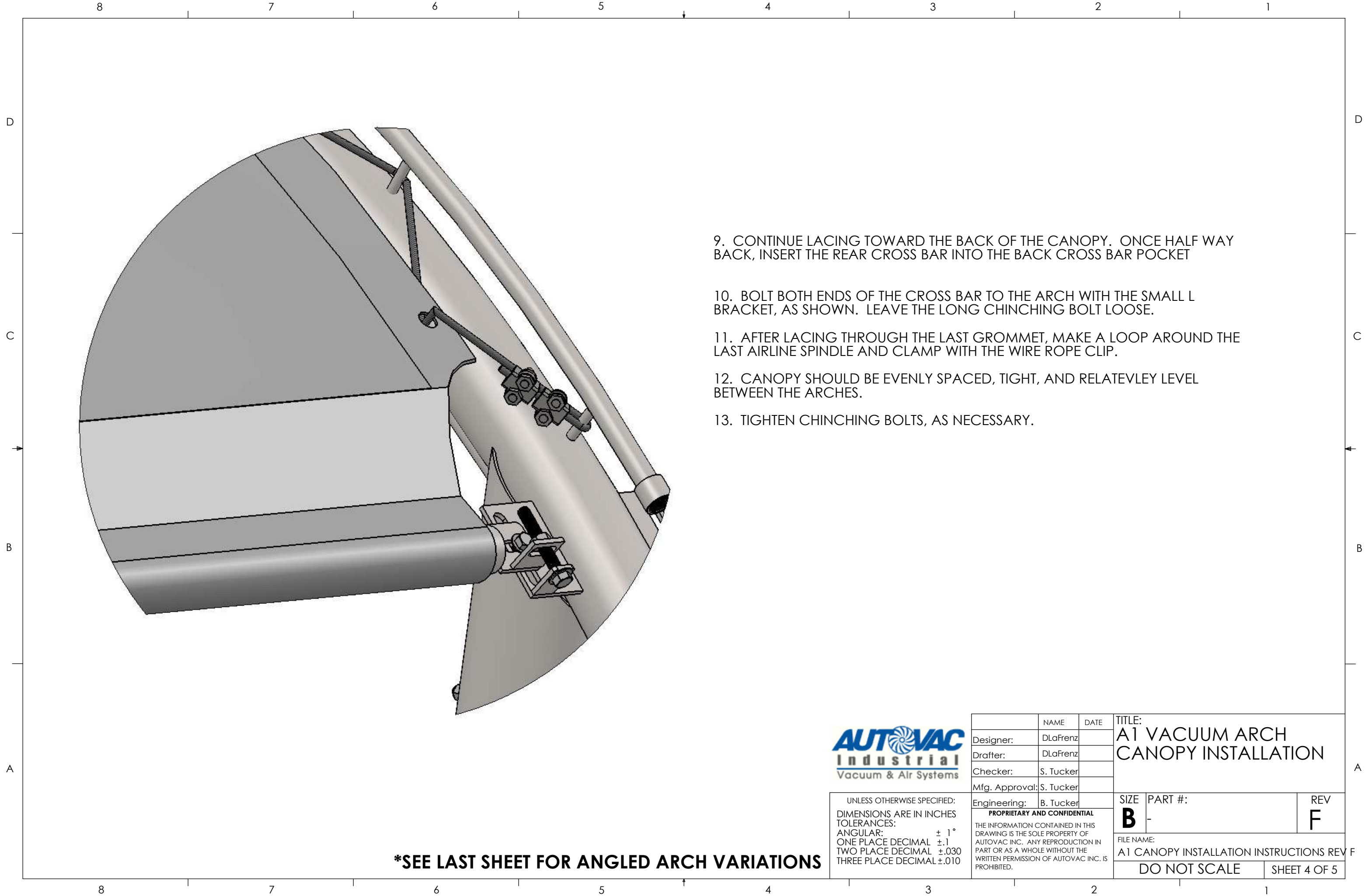
UNLESS OTHERWISE SPECIFIED:  
DIMENSIONS ARE IN INCHES  
TOLERANCES:  
ANGULAR: ± 1°  
ONE PLACE DECIMAL ±.1  
TWO PLACE DECIMAL ±.030  
THREE PLACE DECIMAL ±.010

**PROPRIETARY AND CONFIDENTIAL**  
THE INFORMATION CONTAINED IN THIS DRAWING IS THE SOLE PROPERTY OF AUTOVAC INC. ANY REPRODUCTION IN PART OR AS A WHOLE WITHOUT THE WRITTEN PERMISSION OF AUTOVAC INC. IS PROHIBITED.

FILE NAME:  
A1 CANOPY INSTALLATION INSTRUCTIONS REV F

**\*SEE LAST SHEET FOR ANGLED ARCH VARIATIONS**

DO NOT SCALE SHEET 3 OF 5



9. CONTINUE LACING TOWARD THE BACK OF THE CANOPY. ONCE HALF WAY BACK, INSERT THE REAR CROSS BAR INTO THE BACK CROSS BAR POCKET

10. BOLT BOTH ENDS OF THE CROSS BAR TO THE ARCH WITH THE SMALL L BRACKET, AS SHOWN. LEAVE THE LONG CHINCHING BOLT LOOSE.

11. AFTER LACING THROUGH THE LAST GROMMET, MAKE A LOOP AROUND THE LAST AIRLINE SPINDLE AND CLAMP WITH THE WIRE ROPE CLIP.

12. CANOPY SHOULD BE EVENLY SPACED, TIGHT, AND RELATEVLEY LEVEL BETWEEN THE ARCHES.

13. TIGHTEN CHINCHING BOLTS, AS NECESSARY.



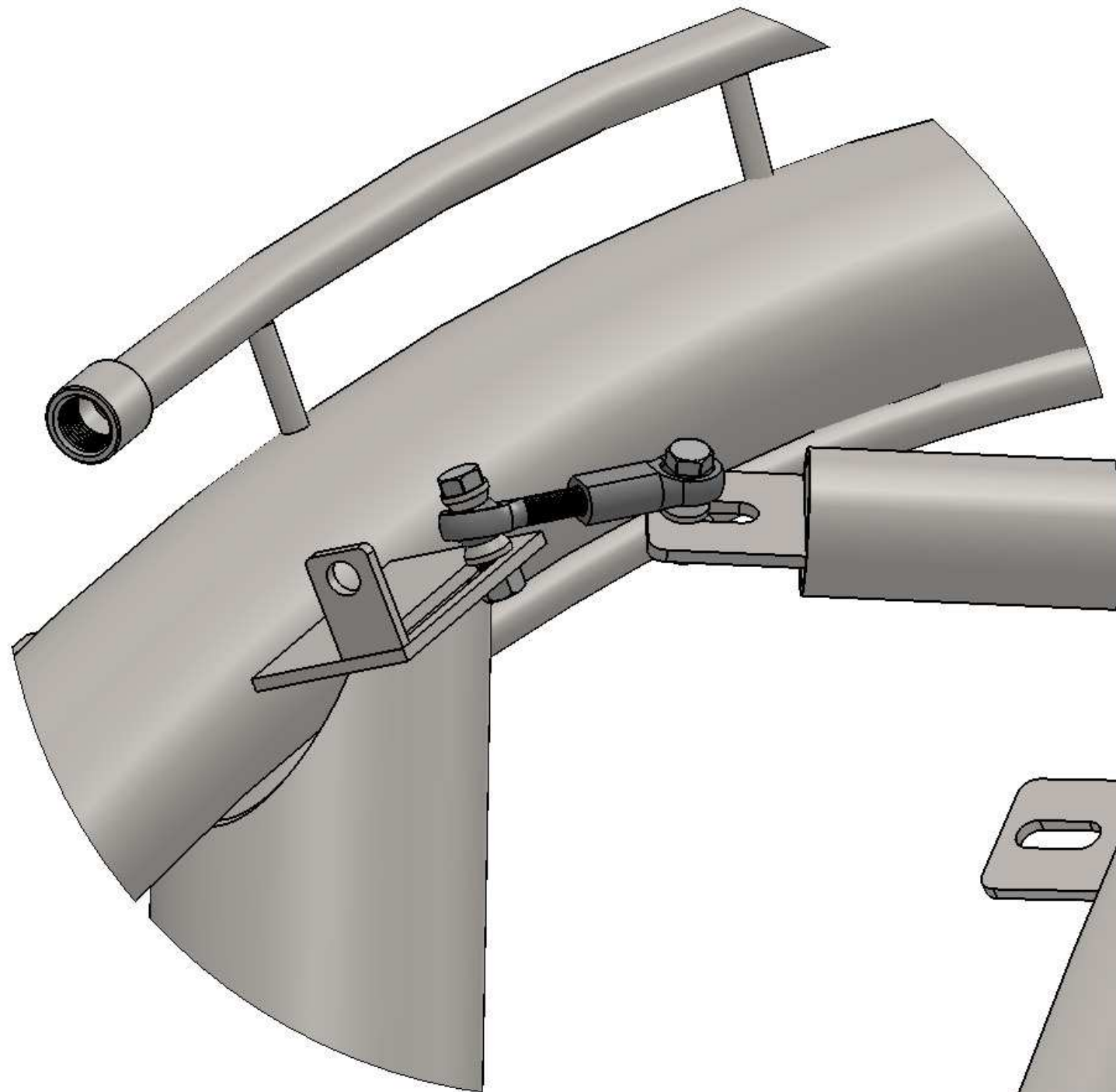
	NAME	DATE	TITLE: <b>A1 VACUUM ARCH CANOPY INSTALLATION</b>	
Designer:	DLaFrenz			
Drafter:	DLaFrenz			
Checker:	S. Tucker			
Mfg. Approval:	S. Tucker			
Engineering:	B. Tucker		SIZE <b>B</b>	PART #: -
UNLESS OTHERWISE SPECIFIED: DIMENSIONS ARE IN INCHES TOLERANCES: ANGULAR: ± 1° ONE PLACE DECIMAL ±.1 TWO PLACE DECIMAL ±.030 THREE PLACE DECIMAL ±.010			REV <b>F</b>	
<b>PROPRIETARY AND CONFIDENTIAL</b> THE INFORMATION CONTAINED IN THIS DRAWING IS THE SOLE PROPERTY OF AUTOVAC INC. ANY REPRODUCTION IN PART OR AS A WHOLE WITHOUT THE WRITTEN PERMISSION OF AUTOVAC INC. IS PROHIBITED.			FILE NAME: A1 CANOPY INSTALLATION INSTRUCTIONS REV F	
			DO NOT SCALE	SHEET 4 OF 5

**\*SEE LAST SHEET FOR ANGLED ARCH VARIATIONS**

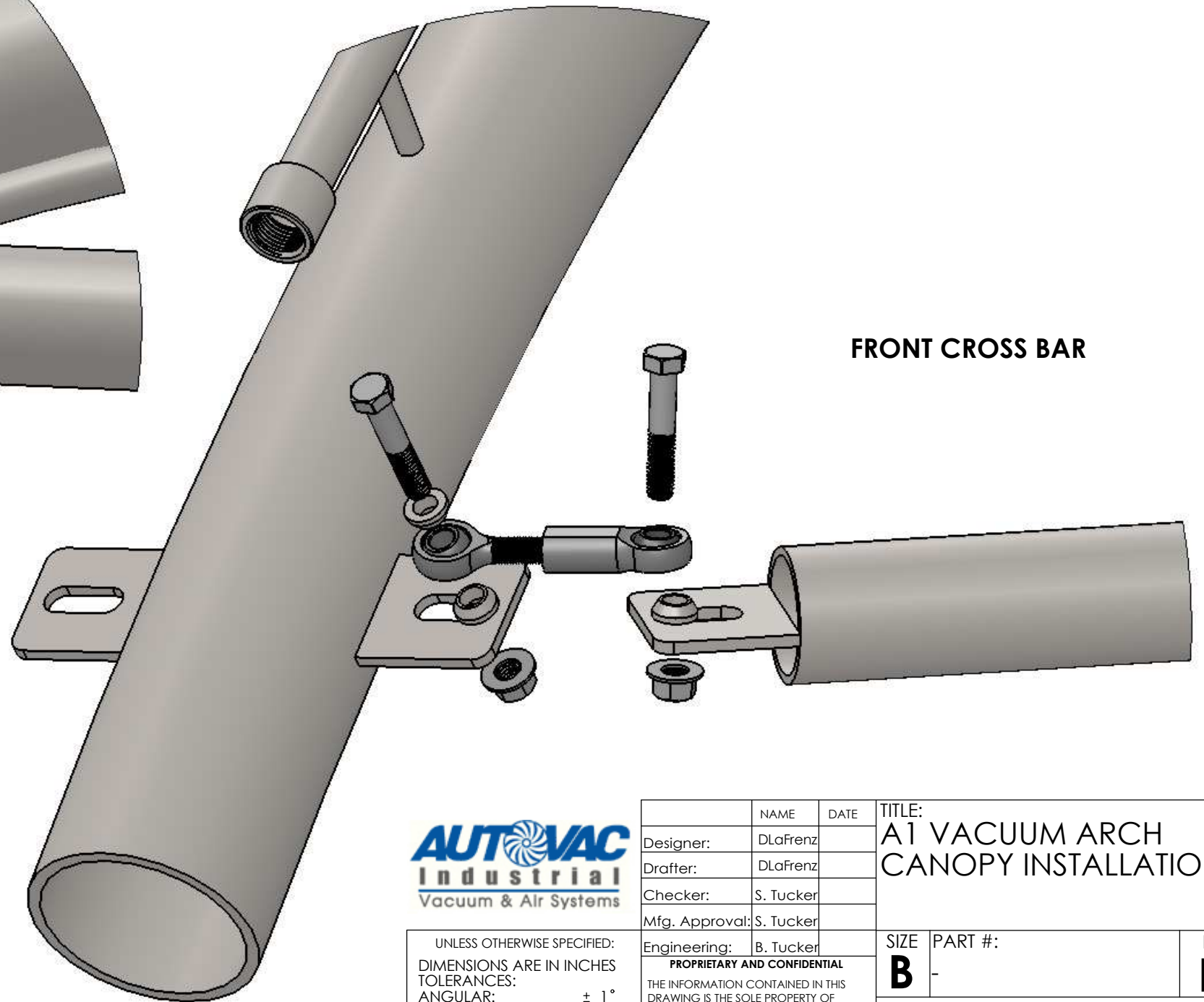
**CROSS BAR ATTACHEMENT FOR ANGLED ARCHES  
(FOR ANGLED PARKING SPACES ONLY)**

D  
C  
B  
A

D  
C  
B  
A



**REAR CROSS BAR**



**FRONT CROSS BAR**



UNLESS OTHERWISE SPECIFIED:  
DIMENSIONS ARE IN INCHES  
TOLERANCES:  
ANGULAR:  $\pm 1^\circ$   
ONE PLACE DECIMAL  $\pm .1$   
TWO PLACE DECIMAL  $\pm .030$   
THREE PLACE DECIMAL  $\pm .010$

	NAME	DATE
Designer:	DLaFrenz	
Drafter:	DLaFrenz	
Checker:	S. Tucker	
Mfg. Approval:	S. Tucker	
Engineering:	B. Tucker	

**PROPRIETARY AND CONFIDENTIAL**  
THE INFORMATION CONTAINED IN THIS DRAWING IS THE SOLE PROPERTY OF AUTOVAC INC. ANY REPRODUCTION IN PART OR AS A WHOLE WITHOUT THE WRITTEN PERMISSION OF AUTOVAC INC. IS PROHIBITED.

TITLE: <b>A1 VACUUM ARCH CANOPY INSTALLATION</b>		
SIZE <b>B</b>	PART #: -	REV <b>F</b>

FILE NAME: <b>A1 CANOPY INSTALLATION INSTRUCTIONS REV F</b>	
<b>DO NOT SCALE</b>	<b>SHEET 5 OF 5</b>

8 7 6 5 4 3 2 1

8 7 6 5 4 3 2 1