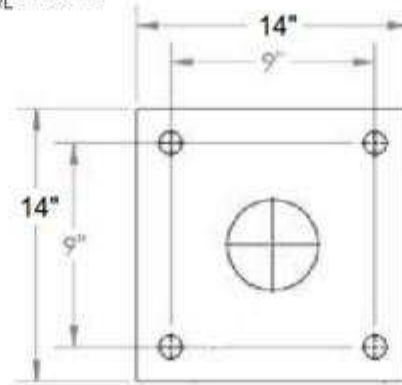


SEE AUTOVAC DRAWINGS FOR ALL SITE INFORMATION, LAYOUTS, EXACT DIMENSIONS AND ALL VACUUM DETAILING.

NOTES:

1. HSS6.000x.188" COLUMN.
2. 3/4" STEEL BASE PLATE 16"Ø WITH (4) 1/2" Ø x 20" F1554-36 THREADED ROD ANCHORS.
3. 2 1/2"x2 1/2"x 3/8" PLATE WASHER & DOUBLE NUT.
4. 1/4" STEEL STIFFENER PLATES.
5. CONCRETE FOUNDATION.
6. (6) #5 VERTICALS W/ #3 CLOSED TIES @ 12" O.C. AND (2) TIES @ TOP.
7. HSS3.500x.188" ARCH ARM.
8. 3/8" MIN. STEEL PIPE CLAMP W/ (4) 5/8" Ø GR. 5 BOLTS.
9. HSS2.375x.125" UPPER ARM.
10. 5/8" MIN. STEEL PIPE CLAMP W/ (4) 1/2" Ø GR. 5 BOLTS. 4 7/8" Ø MAX. BOLT CIRCLE
11. GRADE OR PAVING.



01 L1 VACUUM ARCH AND FOOTING DETAIL
N.T.S.

Notes: Unless otherwise specified

VACUUM SYSTEM ENGINEERING, LICENSING, PERMITS AND FEES

VACUUM SYSTEM \ STRUCTURAL ENGINEERING:
AUTOVAC ENGINEERS ALL OF ITS VACUUM SYSTEMS IN HOUSE. THIS CONSISTS OF VACUUM USAGE ANALYSIS, PIPE SIZING AND PIPE ROUTING. STRUCTURAL ENGINEERING ON ANY OF AUTOVAC PRODUCTS IS AVAILABLE AT AN ADDITIONAL FEE AND IS NOT INCLUDED IN THE QUOTED PRICE OR DOCUMENT SET UNLESS SPECIFICALLY NOTED AS "STRUCTURAL ENGINEERING INCLUDED". STRUCTURAL ENGINEERING IS COMPLETED BY A LICENSED STRUCTURAL ENGINEER IN THE MUNICIPALITY OF THE JOB SITE.

GENERAL STRUCTURAL NOTES:

CODE:

CALIFORNIA BUILDING CODE, 2013 EDITION.

LOADS:

SEISMIC: NOT CRITICAL
WIND: 115-MPH (EXP. C)
FABRIC DEAD LOAD: 1-PSF.
ROOF LIVE LOAD: 5-PSF.

FOUNDATIONS:

SEE SOILS REPORT BY: NONE, CLAYEY SILT SOIL
DESIGN SOIL BEARING PRESSURE: 1500 PSF.
FOOTINGS SHALL BEAR ON FIRM, UNDISTURBED SOIL.

CONCRETE:

MINIMUM 28 DAY STRENGTH TO BE 2500 PSI.
MAXIMUM SLUMP: 5 IN. TYPE II -V
MECHANICALLY VIBRATE ALL CONCRETE WHEN PLACED.

REINFORCING:

ASTM A-615 GRADE 60 (Fy=60 KSI)
CLEAR CONCRETE COVERAGE AS FOLLOWS:
CAST AGAINST EARTH 3 IN.

STRUCTURAL STEEL:

FABRICATED AND ROLLED SHAPES U.N.O. ASTM A36 (Fy = 36 KSI)
ROUND HSS ASTM A500 (Fy = 46 KSI)
DETAILING, FABRICATION AND CONSTRUCTION PER LATEST AISC MANUAL
FINISH PER AUTOVAC.
ANCHOR BOLTS TO BE ASTM A36 EQUIV. OR F1554-36.
PIPE FLANGE BOLTS TO BE GRADE 5 OR EQUAL.

WELDING:

PER LATEST AWS STANDARDS BY CERTIFIED WELDERS.
USE E70 LOW HYDROGEN RODS UNLESS NOTED OTHERWISE.



888-628-8682
www.autovacinc.com
sales@autovacinc.com

CLIENT APPROVAL

NAME AND DATE:

SIGNATURE:

DRAWN BY:

CJ

REV:

A

PROJECT TITLE:
L1 VACUUM ARCH AND FOOTING DETAIL

PROJECT NO.:
188-1001