



Top Brush Torque Plate - Shoulder Bolt Kit

**Technical Bulletin**

9/17/20

**Summary**

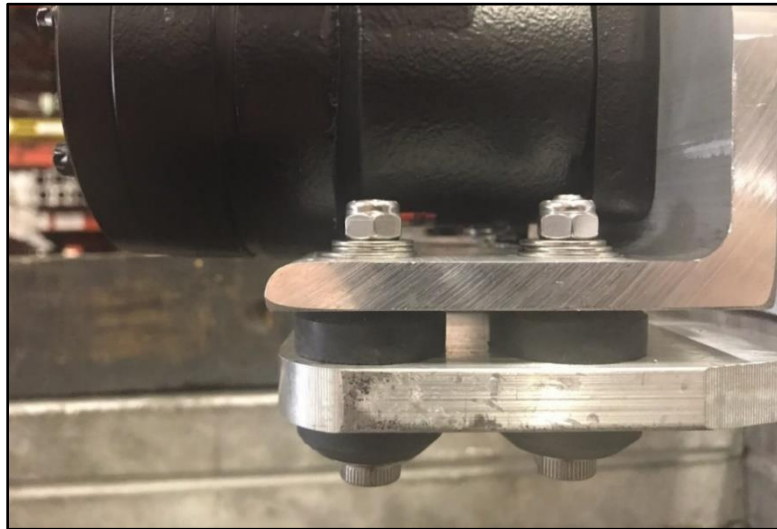
This Technical Bulletin has been issued to guide installers and operators for installing the Shoulder Bolt Kit for the Top Brush torque plate, and the correct use of the washers in the bolt kit.

The information below covers installing the Shoulder Bolt Kit for both the **hydraulic** and **electric** versions of the Top Brush and is valid for both the **2K14 Top Brush** and the **DCW Top Brush** assemblies but does *not* apply to the **Compact Top Brush**.

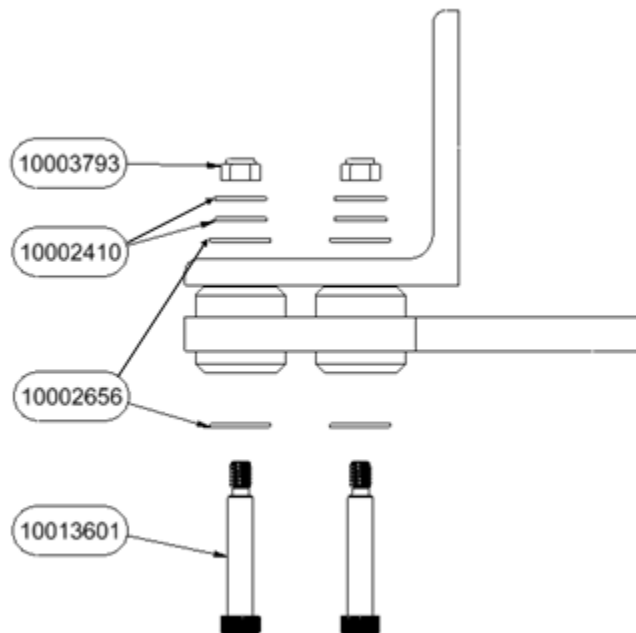
**Detail Information**

**1. Hydraulic Top Brush**

Count	Part #	Description	Image
4	10013601	Shoulder Bolt, 3/8 x 1.75 x 5/16-18 SS	
8	10002656	Washer, Flat USS 3/8	
8	10002410	Washer, Flat USS 5/16	
4	10003793	Nut, Hex, Nylon-Lock, 5/16-18	



1. Use one 3/8" washer (10002656) on the head of the bolt (10013601).
2. Place the other 3/8" washer (10002656) on the base of the mount bracket.
3. Place both of the 5/16" washers (10002410) on top of the 3/8" washer on the base of the mount bracket.
4. Place and tighten the Nylon-Lock nut (10003793) on top of the two 5/16" washers.

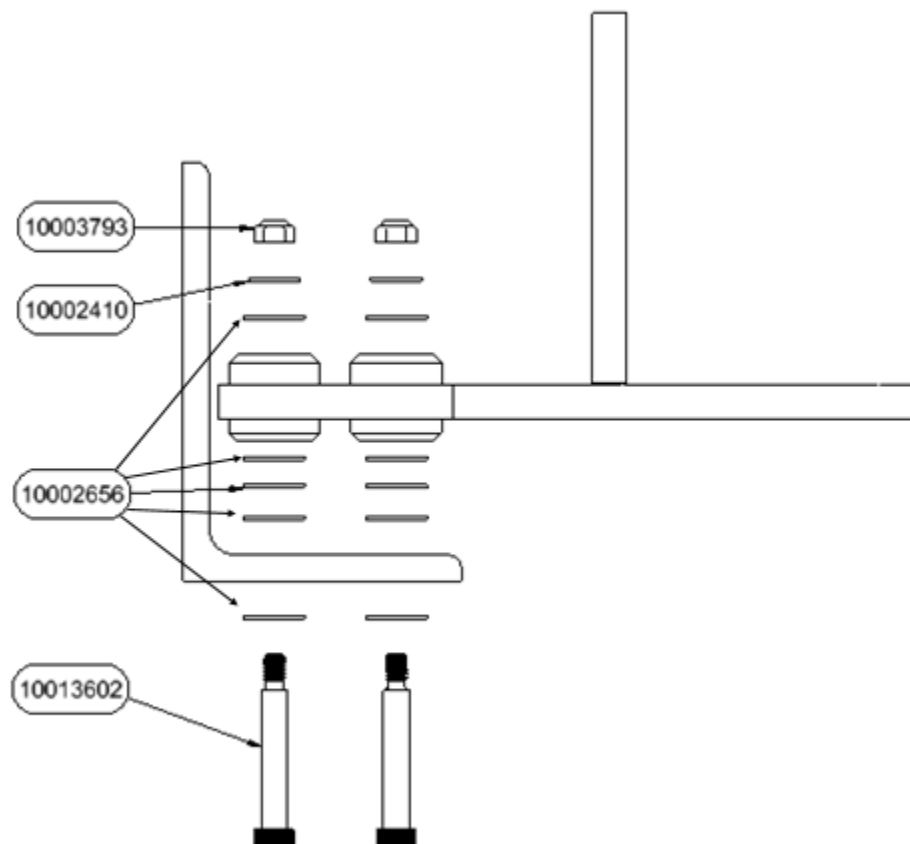


**2. Electric Top Brush**

Count	Part #	Description	Image
4	10013602	Shoulder Bolt, 3/8 x 2.00 x 5/16-18 SS	
20	10002656	Washer, Flat USS 3/8	
4	10002410	Washer, Flat USS 5/16	
4	10003793	Nut, Hex, Nylon-Lock, 5/16-18	



1. Use one 3/8" washer (10002656) on the head of the bolt (10013602).
2. Place three 3/8" washers (10002656) between the base of the mount bracket and the vibration isolator.
3. Place one 3/8" washer (10002656) on top the vibration isolator.
4. Place one 5/16" (10002410) washer on top of the 3/8" washer on vibration isolator.
5. Place and tighten the Nylon-Lock nut (10003793) on top of the 5/16" washer.



**For Additional Information** Please contact Sonny's Tech Support Team for installation and/or operational questions regarding this Technical Bulletin.

You can also visit our website at [www.SonnysDirect.com](http://www.SonnysDirect.com).

<b>DEPARTMENT</b>	<b>PHONE</b>	
Toll Free Main Line	800-327-8723	
Sonny's Tech Support	954-720-4100	Extension 234

[Sonnys-Support@SonnysDirect.com](mailto:Sonnys-Support@SonnysDirect.com)

---