

Wrap-Around Brush Arms – Rubber Bumper Placement

Technical Bulletin

6-19-2020

Summary

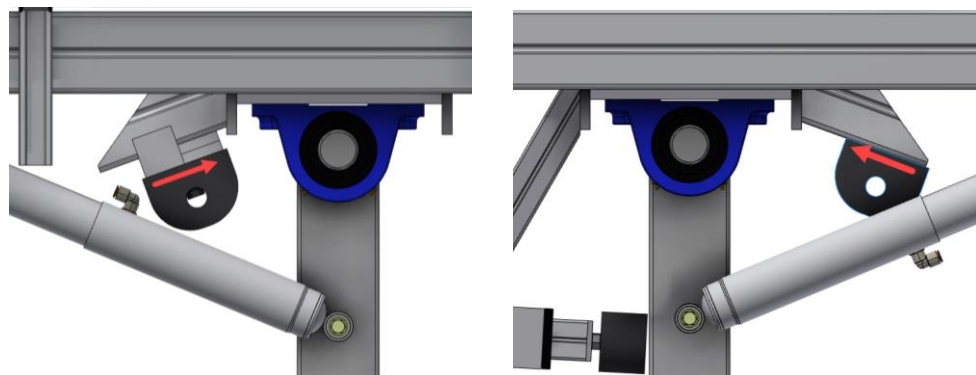
An issue has been detected with the placement of the Rubber Bumper for the Wrap Around Retract Position.

When the Wrap Arms are retracted, an incorrect placement of the Rubber Bumper can cause the Retract Air Cylinders and/or Shock Absorbers to bottom out before the arm touches the bumper. This can cause components to prematurely fail.

The purpose of this Technical Bulletin is to show customers and operators the proper placement of the Rubber Bumper. This bulletin also contains information about adjustments that can be made using the three holes available for securing for the **Soft Stop Bumper**, **Shock Absorber** and **Retract Cylinder**.

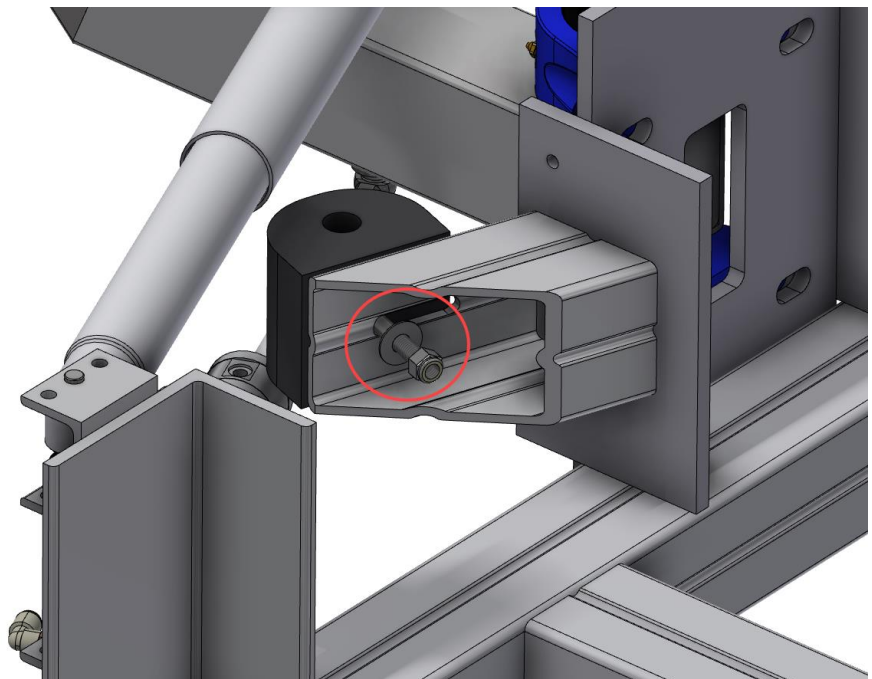
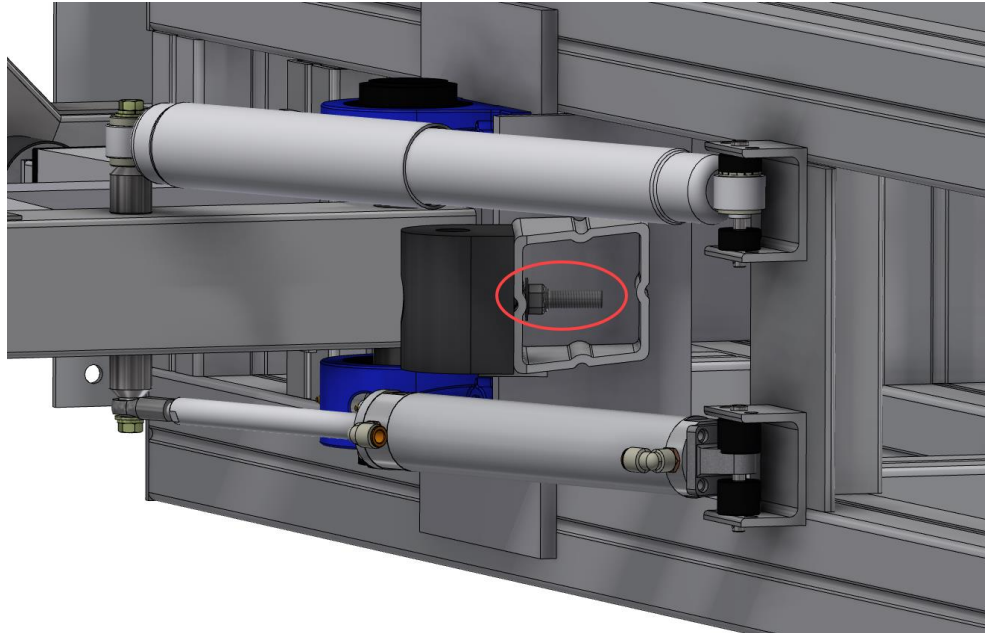
Detail Information

The Rubber Bumper should always be adjusted so that the arms fully contact the bumper before the Retract Cylinder or Shock Absorber bottom out through the stroke.

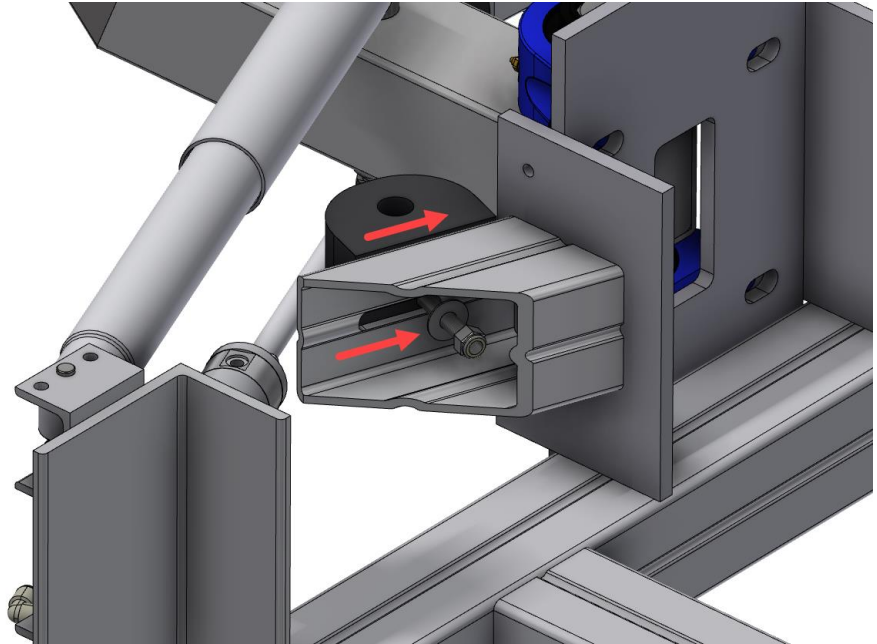


Check the Rubber Bumpers on your Wrap-Around Brush arms. If the Arm is not contacting the Rubber Bumper when retracted, adjust the Bumper by using the slot on the frame.

1. Loosen the nut directly behind the Rubber Bumper that holds it securely in place.



2. Slide the Rubber Bumper as needed towards the bearing blocks. This will reduce the opening when fully retracted.



3. Re-tighten the bolt.

Using the Three Holes for the Soft Stop Bumper, Shock Absorber and Retract Cylinder

There is an option for three holes to be used when securing the **Soft Stop Bumper, Shock Absorber** and **Retract Cylinder**. The Wrap-Around Brush is shipped with the pins for each attached in the **middle** hole, as in the following pictures:



Detail View

Depending on their business needs, customers may choose to set the pins for the **Shock Absorber** and **Retract Cylinder** in the **third (outer) hole**. For example, if you require a wider retract clearance, you may want to set the Shock Absorber and Air Cylinder pins in the third hole, which results in pulling the brushes further away from the vehicle when retracted.

It is very important to adjust both sets of pins, respectively. In this case, if you choose to set the Shock Absorber and Air Cylinder pins in the third (outer) hole for a wider clearance, the **third holes** must also be used for the **Soft Stop Bumper**, as shown below:



Similarly, if you choose to set the **Shock Absorber** and **Retract Cylinder** pin in the **first (innermost) hole**, for chasing the back of vehicles more aggressively. You must also use the first (innermost) hole for the **Soft Stop Bumper**, as shown below:



**For
Additional
Information**

Please contact Sonny's Equipment Department for installation and/or operational questions regarding this Technical Bulletin.

You can also visit our website at www.SonnysDirect.com.

DEPARTMENT	PHONE	FAX
Toll Free Main Line	800-327-8723	800-495-4049
Equipment Department	954-720-4100	954-720-9292

Or you can email Sales at sales@SonnysDirect.com
